

Rockport Reservoir

Guide to eating fish safely



Adults*

Meal size
8 oz

4

Maximum
meals per
month

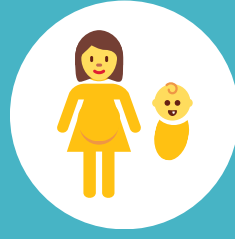


WCB**
Children 6-16 yrs

Meal size
8 oz

1

Maximum
meal per
month



Pregnant women
Children <6 yrs

Meal size
4 oz

**Do not
eat**

Why is there a consumption advisory?

Some fish from Rockport Reservoir have high levels of mercury in them making them unsafe to eat in large amounts. Mercury is a heavy metal that can harm your health. Pregnant women and children under six are especially vulnerable to harmful effects of mercury.

How can I reduce my risk?

You can't remove heavy metals like mercury by any cooking or cleaning methods. Instead, follow the monthly meal recommendations on the left to safely eat fish from Electric lake.

Smallmouth bass



Contact info

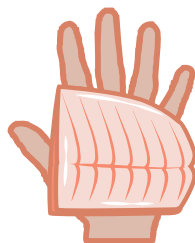
Health & Human Services: EEP@utah.gov
Environmental Quality: deqinfo@utah.gov
Natural Resources: 801-538-4700



Serving size

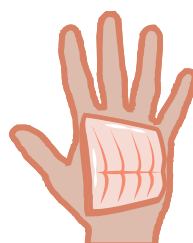
A serving of fish is about the size and thickness of your hand. Pregnant or breastfeeding women and children should have smaller servings.

For adults



8 ounces

For children and pregnant women



4 ounces

