



State of Utah

SPENCER J. COX  
*Governor*

DEIDRE HENDERSON  
*Lieutenant Governor*

Department of  
Environmental Quality

Kimberly D. Shelley  
*Executive Director*

DIVISION OF WATER QUALITY  
Erica Brown Gaddis, PhD  
*Director*

**MEMORANDUM**

TO: Water Quality Standards Workgroup

FROM: Jake Vander Laan

DATE: April 18, 2022

SUBJECT: Proposed extension of 1C drinking water use to include the Provo River and tributaries from Provo City diversion (2230 North St) to Murdock Diversion

The Utah Division of Drinking Water and Provo City have requested the addition of a 1C drinking water designated use to a segment of the Provo River to support a drinking water diversion. The proposed diversion is located at a latitude and longitude of approximately 40.263817°, -111.66385°, north of where 2230 North St crosses the Provo River. The diversion is expected to be used for potable water through either the construction of a new drinking water treatment facility or after pumping and storage in a drinking water aquifer. Existing data in the waterbody collected by DWQ and Provo City indicate that the source is suitable for a drinking water intake.

This proposed change to Utah's water quality standards extends the existing 1C drinking water use on the Provo River's upper portions to a lower portion of the Provo River and its tributaries from the proposed diversion (2230 North St) upstream to the headwaters.

R317-2-7 Redline

**R317-2-13. Classification of Waters of the State (see R317-2-6).**

13.5 Utah Lake-Jordan River Basin

b. Provo River Drainage

b. Provo River Drainage

TABLE

Provo River and tributaries, from  
Utah Lake to ~~Murdock Diversion~~  
Provo City Diversion (2230 North St) 2B 3A 4

Provo River and tributaries, from  
Provo City Diversion (2230 North St)  
~~Murdock Diversion~~ to headwaters,  
except as listed below: 1C 2B 3A 4

Upper Falls drainage above Provo  
City diversion 1C 2B 3A  
Bridal Veil Falls drainage above  
Provo City diversion 1C 2B 3A  
Lost Creek and tributaries above  
Provo City diversion 1C 2B 3A

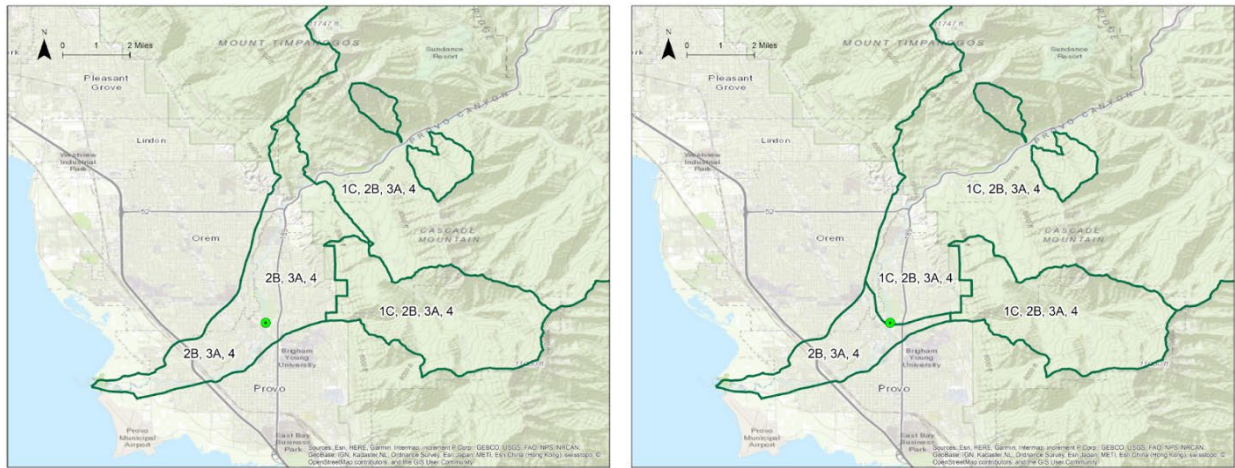


Figure 1. Existing beneficial use designations (left) and proposed extension of 1C drinking water use on the Provo River (right). The green circle marker indicates the location of the proposed drinking water diversion.