

- Sevier Playa Boundary
- BLM and SITLA Lease Boundary

2	7/20/2018	Revised based on comments			
1	1/5/2018	Revised based on comments			
0	10/25/2017	Initial Submission			
NO.	DATE	REVISION		BY	APVD
DSGN	DR	CHK		APVD	

**FIGURE A1-1**

Sevier Playa Potash Project  
Regional Vicinity

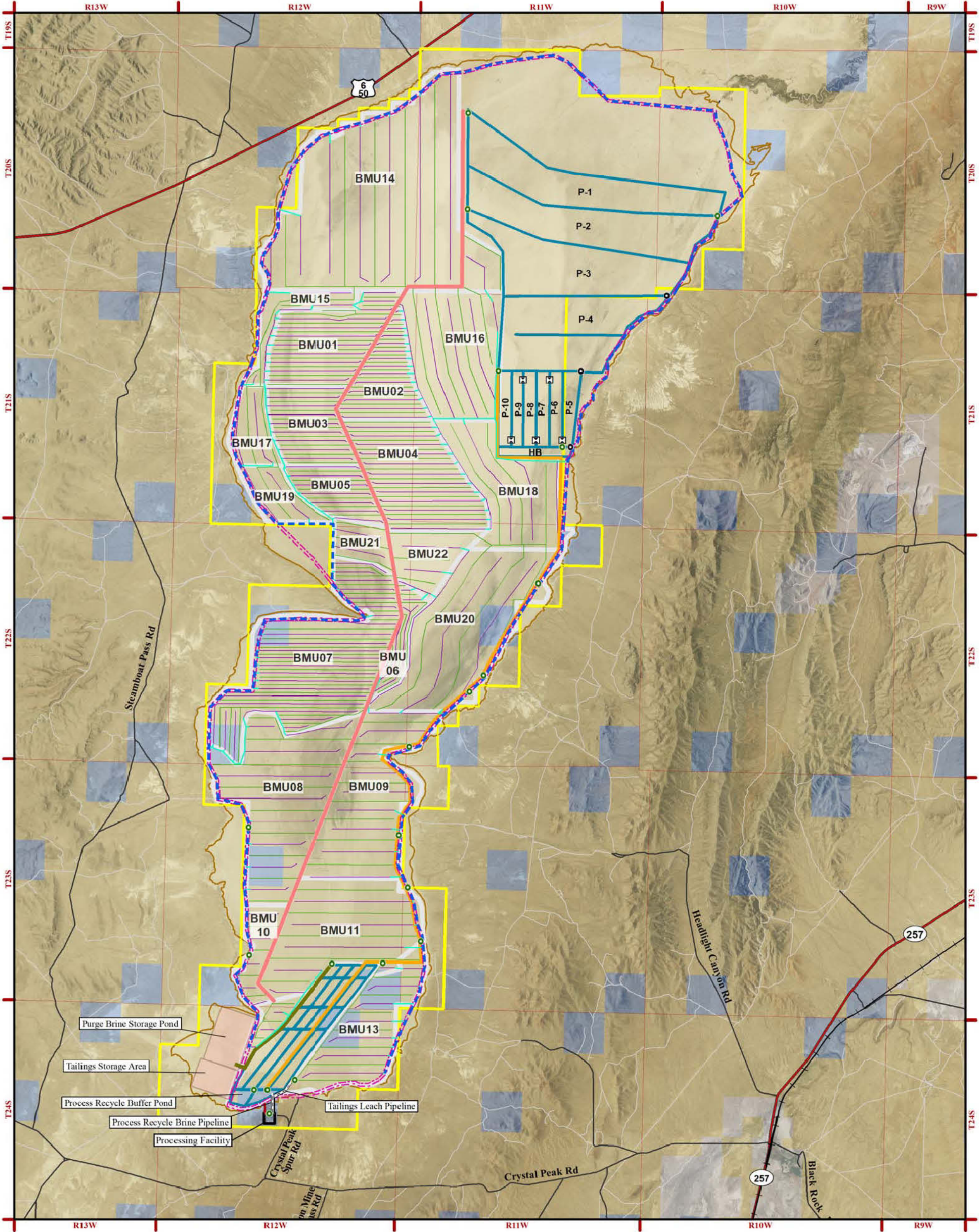
**GROUNDWATER DISCHARGE  
APPLICATION**

DATE: 7/20/2018    SCALE: 1:1,267,200

**CRYSTAL PEAK MINERALS INC.**



Statement of Basis Figure 2: Site Features Map



Proposed Project Features

- Recharge Trench

Recharge Collector

Extraction Trench

Recharge Canal

Extraction Canal

Brine Transfer Canal / Pipeline

Purge Brine Pipeline

Process Recycle Brine Pipeline and Tailings Leach Pipeline

Preconcentration and Production Ponds

Preconcentration Pond Weir

Pump Station - On Lease

Pump Station - Off Lease

Sevier River Diversion

Brine Mining Unit Boundary

Perimeter Road

Haul Roads

General Reference

- BLM and SITLA Lease Boundary

Sevier Playa Boundary

Township/Range Boundary

US Highway, State Highway

Class B Road

Dirt Track Road

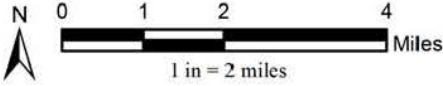
Railroad

Land Ownership

BLM

State Lands

Private



Sources:  
Project features, Crystal Peak Minerals, 2015, 2016, 2017;  
Public land survey system, BLM 2013;  
Land jurisdiction, BLM 2013;  
Roads, Millard County 2013;  
Railroads, ESRI 2000;  
Kern River gas pipeline, BLM 2011;  
Aerial Imagery, USDA/APFO 2016

Notes:  
• The utility siting areas shown on this map are draft and may be revised and/or refined throughout the development of the project.  
• Some features have been graphically offset to improve map legibility.

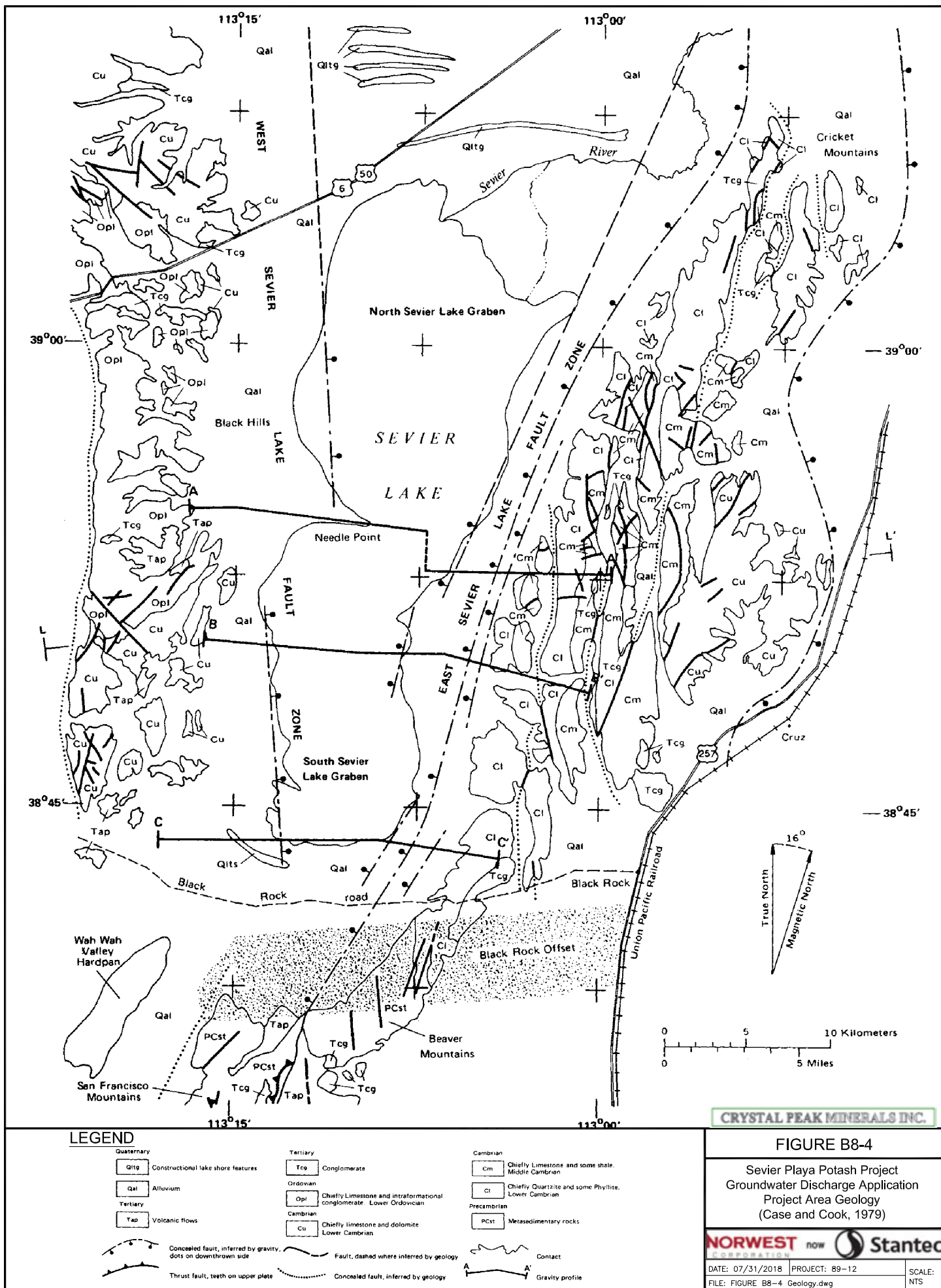
						<b>FIGURE 6</b>  Sevier Playa Potash Project Mine Plan Trench Layout
1	1/18/2018	Revised per Mining Plan Update				
NO.	DATE	REVISION			BY	APVD
DSGN	DR	CHK			APVD	
						DATE: 1/18/2018
						SCALE: 1:150,000
						CRYSTAL PEAK MINERALS INC.

Source: MP\_Fig 6-2 - Trench Layout 180111 1/18/2018 3:38:34 PM  
CPM revised Figure No. and Document Title 3/7/18 by BU

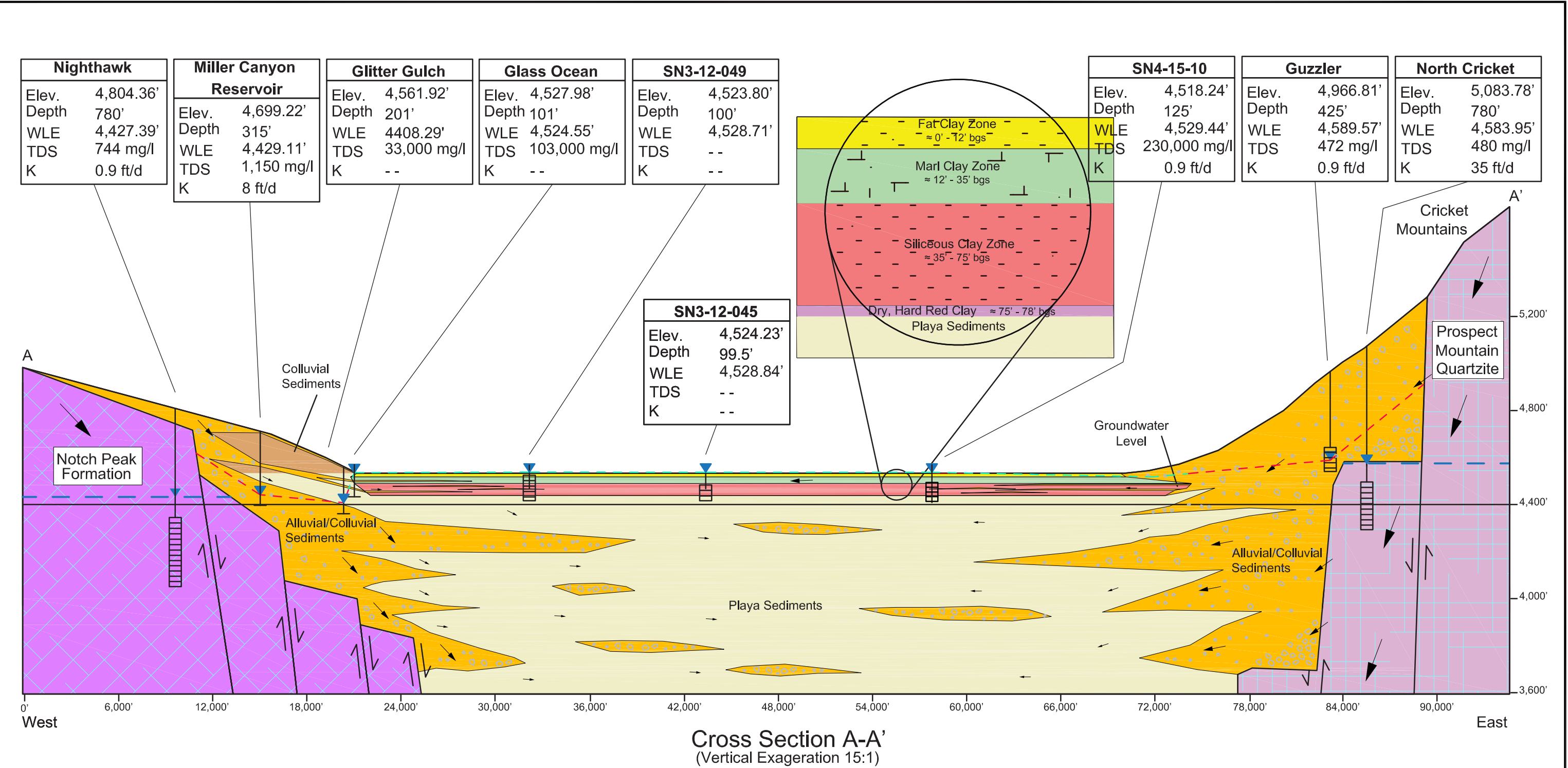
CONFIDENTIAL



# Statement of Basis Figure 3 - Site Geology Map

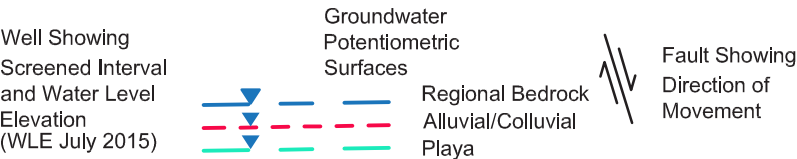


Statement of Basis Figure 4: Sevier Playa Cross-Section



CRYSTAL PEAK MINERALS INC.

EXPLANATION



Key

Elev.	Collar Elevation
Depth	Well Depth
WLE	Water Level Elevation
TDS	Total Dissolved Solids
K	Hydraulic Conductivity

FIGURE B8-9

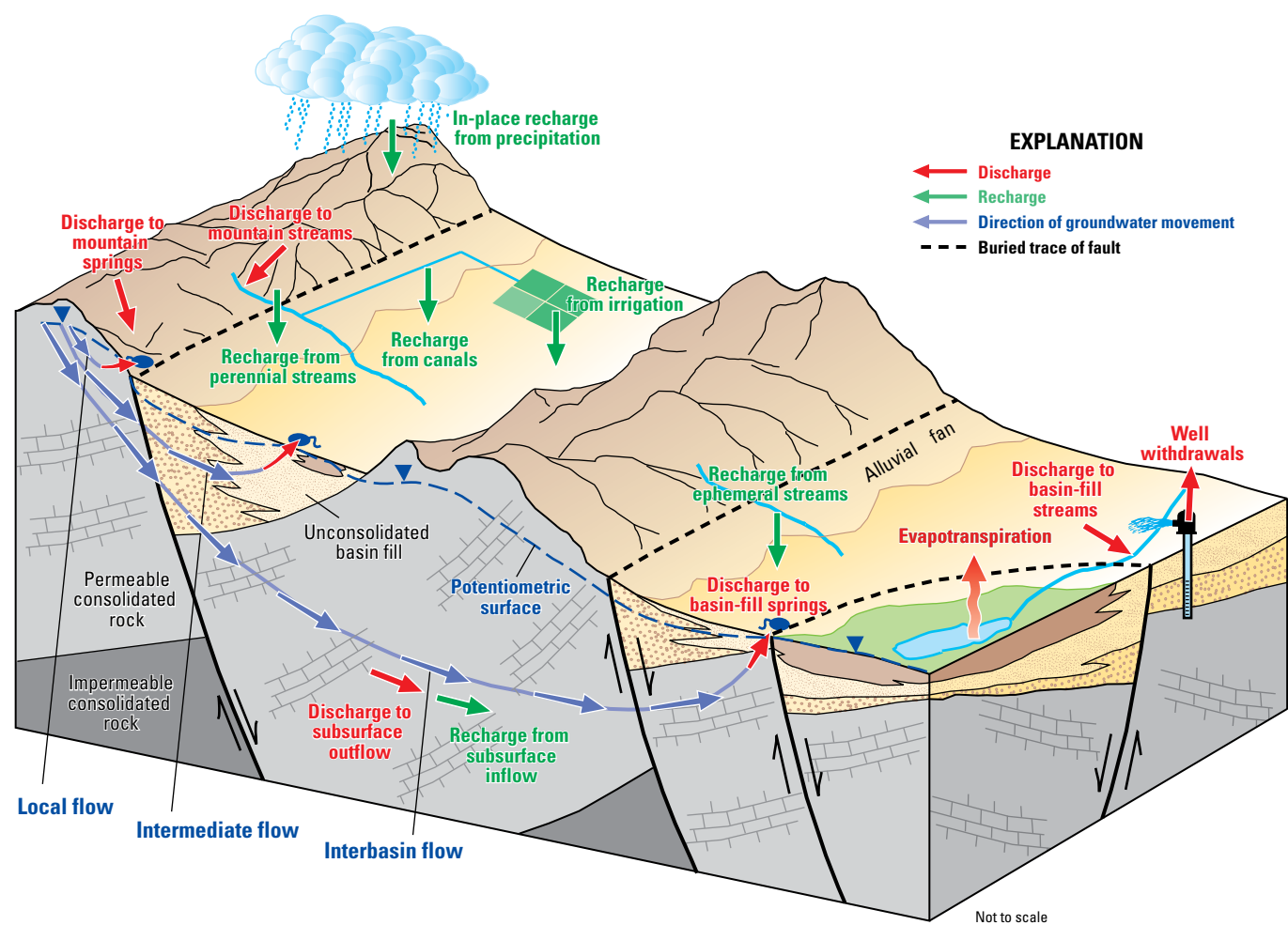
Sevier Playa Potash Project  
Groundwater Discharge Application  
Hydrogeologic Cross-section  
A-A'



DATE: 07/31/2018 PROJECT: 89-12 SCALE: 1"=6000'  
FILE: FIGURE B8-9 Cross-section A-A'.dwg

0	04/04/18	INITIAL SUBMISSION	TJS	GG
NO.	DATE	REVISION	BY	APVD
DSGN	TJS	DR	TJS	CHK
			GG	APVD
			GG	

Statement of Basis Figure 5: Conceptualized Groundwater Flow in Great Basin System (Heilweil and Brooks 2011)



**Figure C-1.** Schematic diagram showing conceptualized groundwater flow in the Great Basin carbonate and alluvial aquifer system study area.



Statement of Basis Figure 6: Existing and Proposed Monitoring Well Locations

