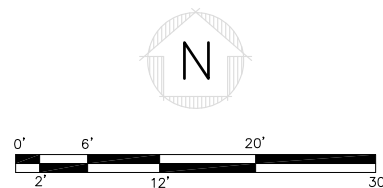
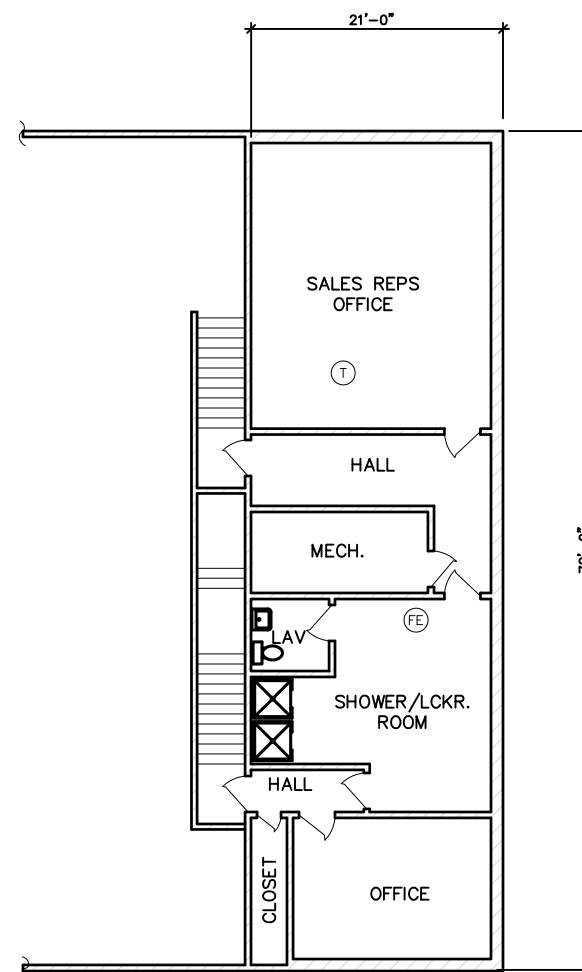
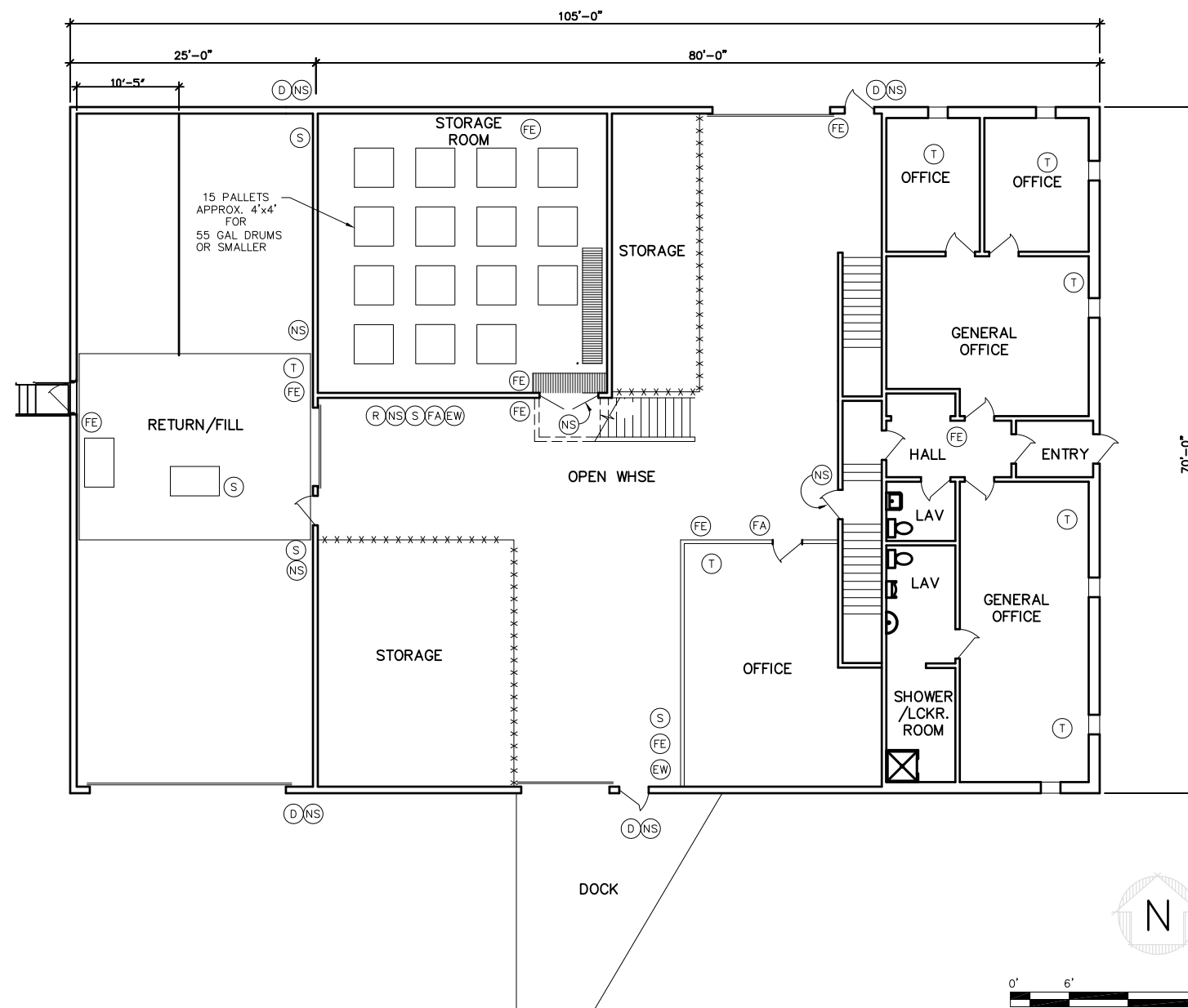


OFFICE, WHSE. & R/F FLOOR PLAN

MEZZANINE FLOOR PLAN



GENERAL NOTES

- 1.) NON-PERMITTED AREAS MAY CHANGE.
- 2.) ACTUAL EQUIPMENT LOCATION MAY VARY DUE TO CONSTRUCTION, MAINTENANCE AND/OR UPKEEP AT THE FACILITY.

LEGEND

- (R) RESPIRATORS
- (EW) EYE WASH
- (S) ABSORBENTS
- (T) TELEPHONE
- (FE) FIRE EXTINGUISHER
- (FA) FIRST AID STATION
- (D) DANGER SIGN
- (NS) NO SMOKING SIGN

ATTACHMENT 3

NO.	DESCRIPTION	BY	CHK	APPR	DATE
G	REMOVE RECYCLE AREA	JEK	RS	RS	12/15/10
F	SHOW ASBUILT CONDITIONS	JEK	RS	RS	07/10/07
E	ADD RECYCLE SYSTEM AREA	JEK	RS	RS	6/17/07
D	ADD OFFICE AND REVISED EQP. LOCATIONS	JEK	RS	RS	5/03/07
C	ADDED 15 PALLETS IN STORAGE ROOM	RDK	KJM	WEY/CL	2/15/97
B	ADDED EGRESS DOOR IN R/F RELEASED TO CL FOR PERMIT MOD	MBH	KJM	WEY/CL	07/26/96
A	NEW RELEASE	MBH	KJM	WEY/CL	05/23/94

TITLE
OFFICE, WHSE, & R/F FLOOR PLAN SHOWING
EMERGENCY EQUIPMENT LOCATIONS - EXISTING

SAFETY-KLEEN SYSTEMS, INC.
5400 LEGACY DR. CLUSTER II BLDG. 3 PLANO, TX. 75024 800-669-5740

SCALE 1/8" = 1'-0"	BY MBH	CHKD KJM	APPROVED WEY	EHS CL	DATE 05-23-94
SERVICE CENTER LOCATION SALT LAKE CITY, UT			SC-DWG NUMBER 7113-WB00-004		REV. NO. G