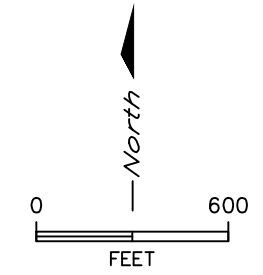
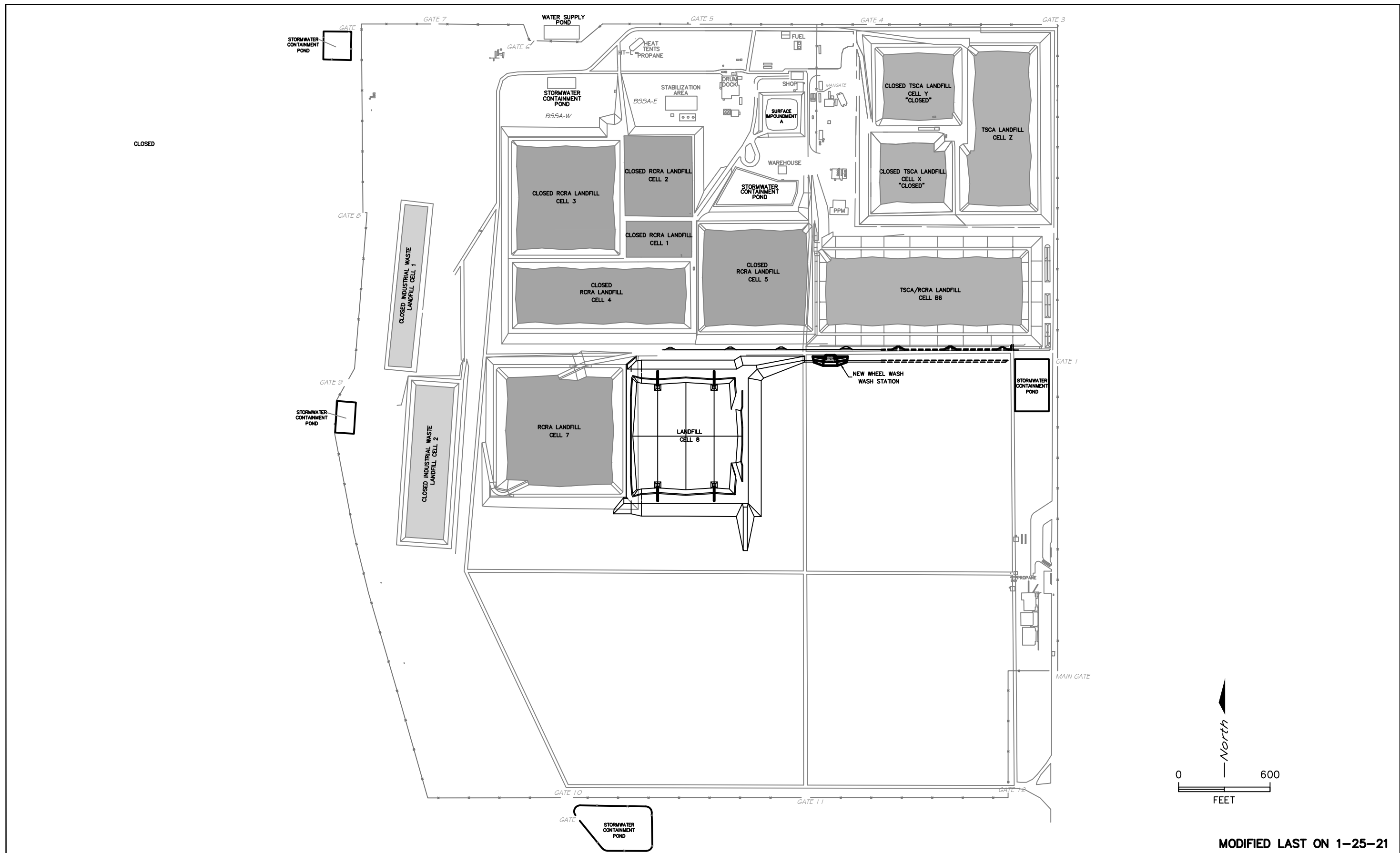


ATTACHMENT III-1

CONTAINER MANAGEMENT BUILDING AND DRAIN
AND FLUSH BUILDING WAREHOUSE ONE
STORAGE AREA DRAWINGS

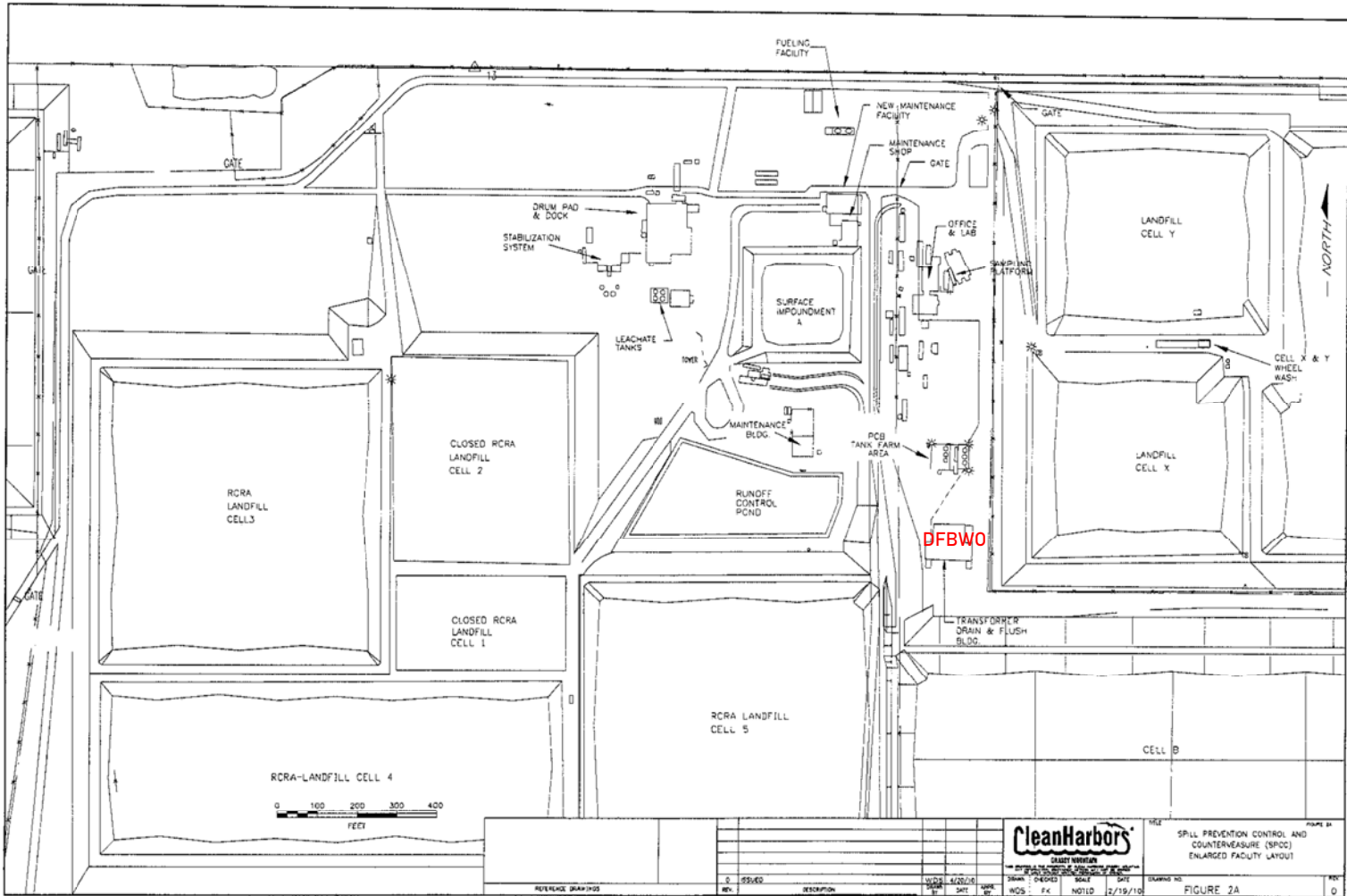


MODIFIED LAST ON 1-25-21

REV.	DESCRIPTION	DATE	BY	CHECKED	SCALE	DATE	DATE	DATE
C	REMOVE RCRA WASHOUT WEST LINE & HEAT TENT HT-S	03/25/11	KMC	F.K				
B	REMOVED MANGATE NEAR GATE 6, REVISED FENCE LINE	11/03/10	KMC	LRA				
A	REVISED LOGO, ADDED TEXT AND REMOVED TANKS	11/03/10	KMC	LRA				

REFERENCE DRAWINGS								

		TITLE CLEAN HARBORS GRASSY MOUNTAIN, LLC ATTACHMENT II-1 FACILITY PLAN VIEW	
DRAWN BY K.M.C.	CHECKED L.R.A.	SCALE 1" = 600'	DATE 11-03-10
DRAWING NO. 963225-08A		REV. C	

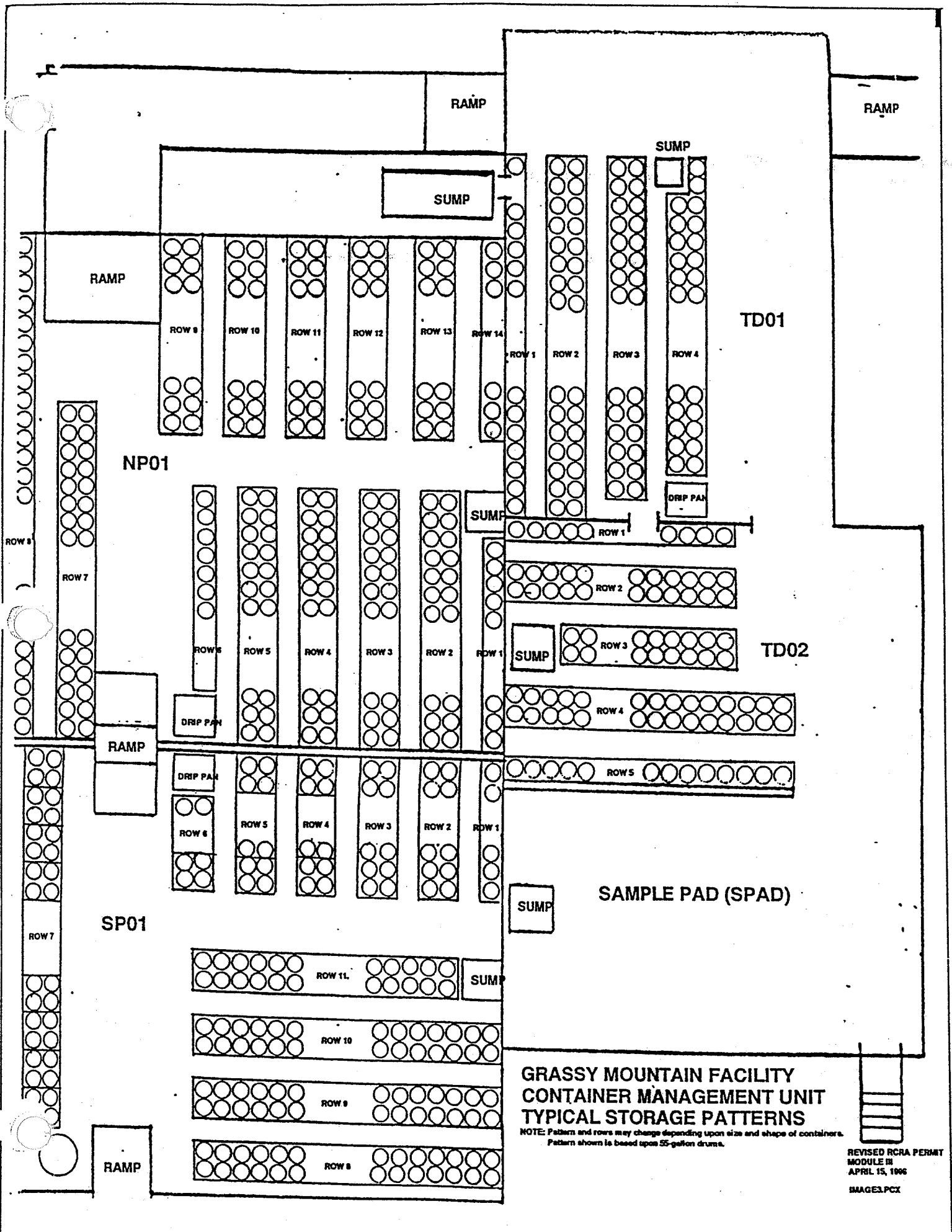


CleanHarbors
CRADY MEMORIAL

SPILL PREVENTION CONTROL AND
 COUNTERMEASURE (SPCC)
 ENLARGED FACILITY LAYOUT

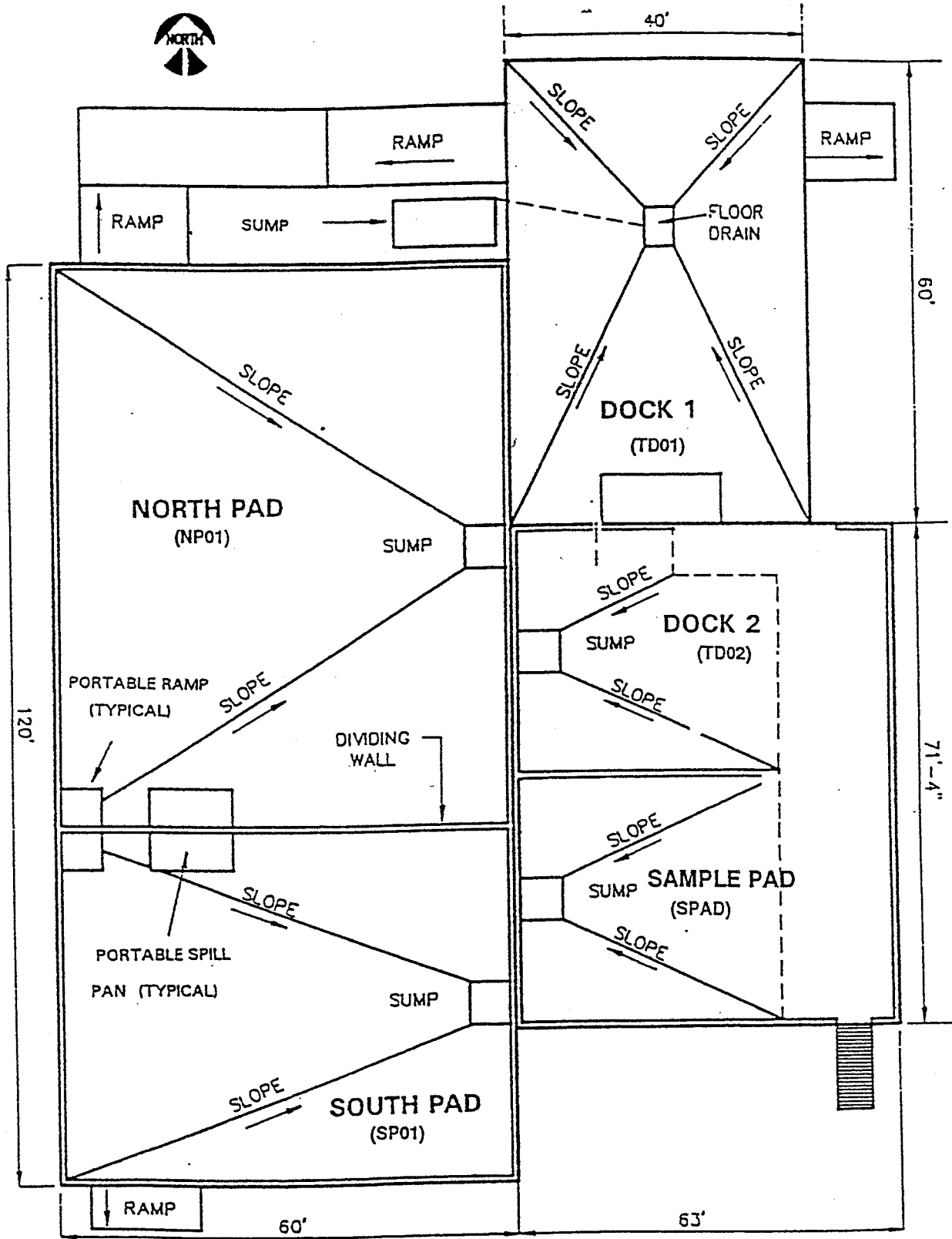
NO.	DATE	DESCRIPTION	BY	CHECKED	DATE	SCALE	SHEET	TOTAL SHEETS
1	02/19/10	NOTED	WOS	FX	NOTED	2/19/10	1	1

FIGURE 2A



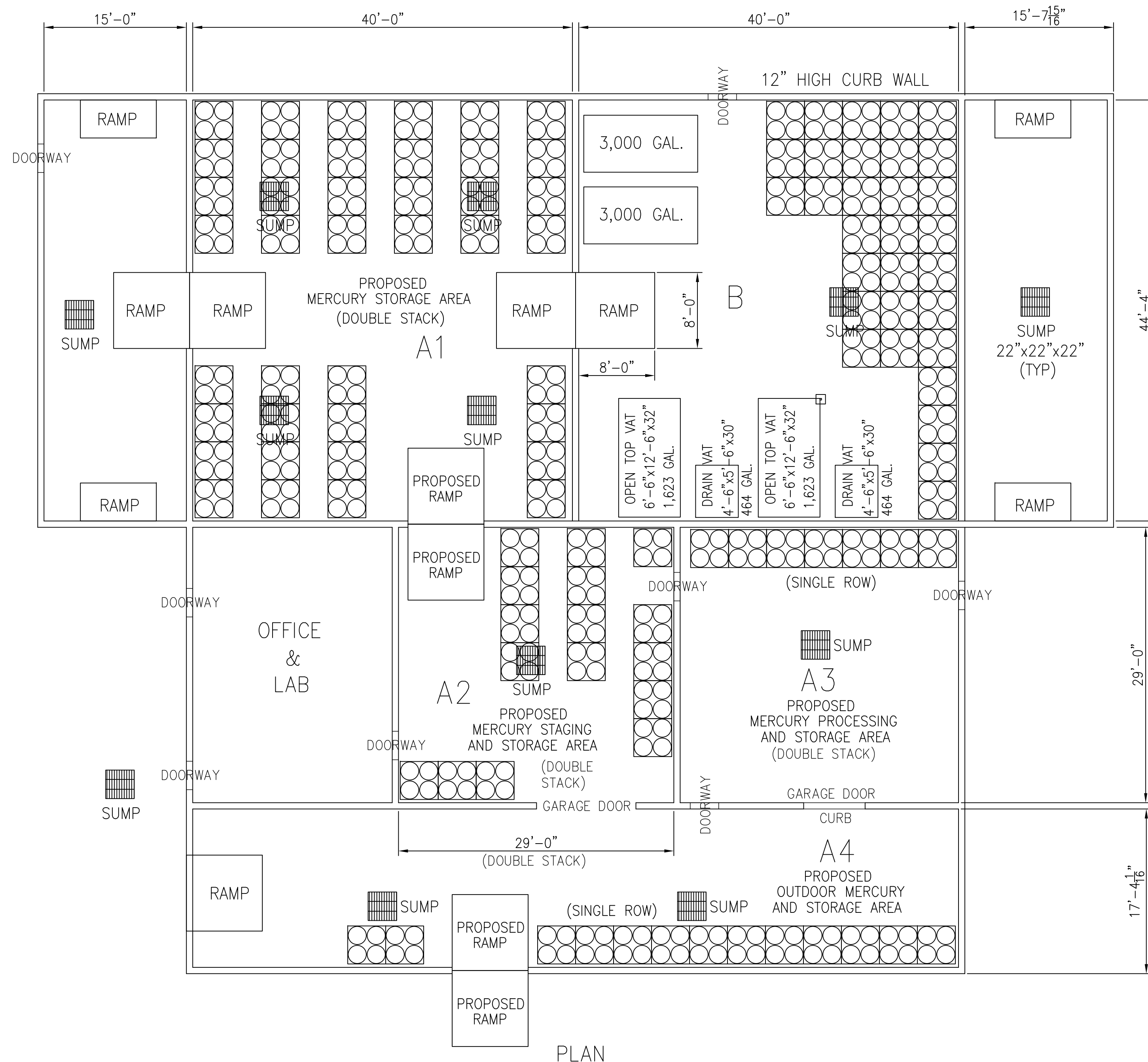
**GRASSY MOUNTAIN FACILITY
CONTAINER MANAGEMENT UNIT
TYPICAL STORAGE PATTERNS**

NOTE: Pattern and rows may change depending upon size and shape of containers.
Pattern shown is based upon 55-gallon drums.

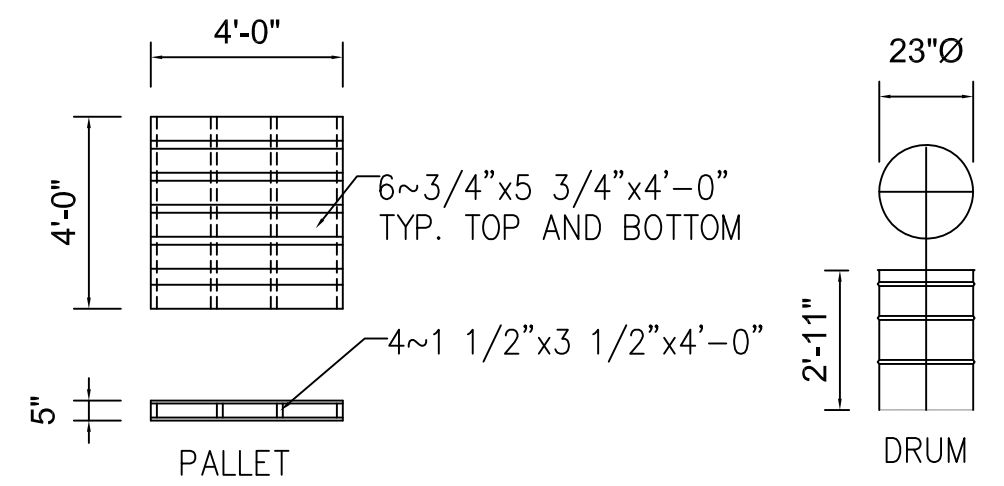


GRASSY MOUNTAIN FACILITY
 CONTAINER MANAGEMENT UNIT
 SECONDARY CONTAINMENT AREAS

REVISED RCRA PERMIT
 MODULE III
 APRIL 15, 1996
 IMAGE2.PCX

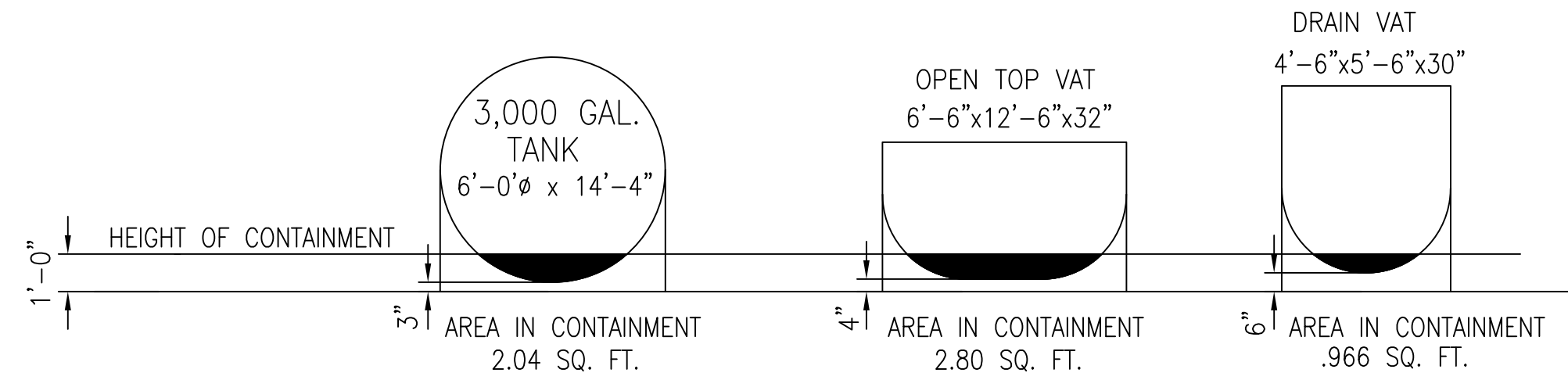


PLAN



PALLET VOLUME CALCULATIONS:
 (6 EA. 3/4"x5 3/4"x4') = 0.72 CU. FT.
 (6 EA. 3/4"x5 3/4"x4') = 0.72 CU. FT.
 (4 EA. 1 1/2"x3 1/2"x4') = 0.58 CU. FT.
 TOTAL VOLUME 2 CUBIC FEET

HEIGHT OF PALLET = 0.42 FT.
 SCALE: 1/4" = 1'-0"



TANK & VAT DISPLACEMENT
 SCALE: 1/4" = 1'-0"

A. REQUIRED CONTAINMENT AREA A1
 320 DRUMS x 55 GAL. EA. = 17,600 GAL.
 17,600 GAL. x .25 = 4,400 GAL.

B. AVAILABLE CONTAINMENT CAPACITY
 40'x44'x1' = 1,760 CU. FT.
 $\frac{x7.481}{2}$
 FLOOR CAPACITY = 13,165 GAL.
 SUMP CAPACITY = 2'x2'x2'x4 = 32 CU. FT.
 $\frac{x7.481}{2}$
 239 GAL.
 TOTAL CAPACITY = 13,404 GAL.

DEDUCT FOR RAMPS
 $\frac{8'x8'x1'}{2} \times 3 = 96$ CU. FT. x 7.48 = 718 GAL. (1)

DEDUCT VOLUME OCCUPIED BY DRUMS/PALLETS
 MAXIMUM CAPACITY = 320 DRUMS
 STACK 2 HIGH = 160 DRUMS
 4 DRUMS / PALLET = 40 PALLETS
 2 CU. FT. / PALLET x 40 = 80 CU. FT.
 $\frac{x7.481}{2}$
 598.4 GAL. (2)

HEIGHT OF DRUMS IN CONTAINMENT
 12" - 5" = 7" OF DRUM VOLUME
 23" Ø DRUM = 1.799 GAL./IN. x 7" = 12.6 GAL./DRUM
 12.6 GAL./DRUM x 160 = 2,013 GAL. (3)

TOTAL DEDUCT FOR RAMPS + DRUMS + PALLETS IN CONTAINMENT
 (i.e., (1) + (2) + (3))
 718 + 599 + 2,013 GAL. = 3,330 GAL.

TOTAL AVAILABLE CONTAINMENT CAPACITY
 13,165 GAL. - 3,330 GAL. = 9,835 GAL.

AVAILABLE CAPACITY (9,835) > REQUIRED CAPACITY (4,400) O.K.

A. REQUIRED CONTAINMENT AREA A3
 56 DRUMS x 55 GAL. EA. = 3,080 GAL.
 3,080 GAL. x .25 = 770 GAL.

B. AVAILABLE CONTAINMENT CAPACITY
 29'x29'x1' = 841 CU. FT.
 $\frac{x7.481}{2}$
 FLOOR CAPACITY = 6,291 GAL.
 SUMP CAPACITY = 2'x2'x2'x1 = 8 CU. FT.
 $\frac{x7.481}{2}$
 60 GAL.
 TOTAL CAPACITY = 6,351 GAL.

DEDUCT VOLUME OCCUPIED BY DRUMS/PALLETS
 MAXIMUM CAPACITY = 56 DRUMS
 STACK 2 HIGH = 28 DRUMS (BOTTOM ROWS)
 4 DRUMS / PALLET = 7 PALLETS
 2 CU. FT. / PALLET x 7 = 14 CU. FT.
 $\frac{x7.481}{2}$
 105 GAL. (2)

HEIGHT OF DRUMS IN CONTAINMENT
 12" - 5" = 7" OF DRUM VOLUME
 23" Ø DRUM = 1.799 GAL./IN. x 7" = 12.6 GAL./DRUM
 12.6 GAL./DRUM x 28 = 353 GAL. (3)

TOTAL DEDUCT FOR DRUMS + PALLETS IN CONTAINMENT
 (i.e., (2) + (3))
 105 + 353 GAL. = 458 GAL.

TOTAL AVAILABLE CONTAINMENT CAPACITY
 6,351 GAL. - 458 GAL. = 5,893 GAL.

AVAILABLE CAPACITY (5,893) > REQUIRED CAPACITY (770) O.K.

A. REQUIRED CONTAINMENT AREA A2 + A4 (CONTIGUOUS)
 232 DRUMS x 55 GAL. EA. = 12,760 GAL.
 12,760 GAL. x .25 = 3,190 GAL.

B. AVAILABLE CONTAINMENT CAPACITY
 29'x29'x1' + 17.38 x 80 x 1 = 2,231.4 CU. FT.
 $\frac{x7.481}{2}$
 FLOOR CAPACITY = 16,691 GAL.
 SUMP CAPACITY = 2'x2'x2'x3 = 24 CU. FT.
 $\frac{x7.481}{2}$
 180 GAL.
 TOTAL CAPACITY = 16,871 GAL.

DEDUCT FOR RAMPS
 $\frac{8'x8'x1'}{2} \times 3 = 96$ CU. FT. x 7.48 = 718 GAL. (1)

DEDUCT VOLUME OCCUPIED BY DRUMS/PALLETS
 MAXIMUM CAPACITY = 232 DRUMS
 STACK 2 HIGH = 116 DRUMS
 4 DRUMS / PALLET = 29 PALLETS
 2 CU. FT. / PALLET x 29 = 58 CU. FT.
 $\frac{x7.481}{2}$
 434 GAL. (2)

HEIGHT OF DRUMS IN CONTAINMENT
 12" - 5" = 7" OF DRUM VOLUME
 23" Ø DRUM = 1.799 GAL./IN. x 7" = 12.6 GAL./DRUM
 12.6 GAL./DRUM x 116 = 1,462 GAL. (3)

TOTAL DEDUCT FOR RAMPS + DRUMS + PALLETS IN CONTAINMENT
 (i.e., (1) + (2) + (3))
 718 + 434 + 1,462 GAL. = 2,614 GAL.

TOTAL AVAILABLE CONTAINMENT CAPACITY AREA
 16,871 GAL. - 2,614 GAL. = 14,257 GAL.

AVAILABLE CAPACITY (14,257) > REQUIRED CAPACITY (3,190) O.K.

REQUIRED CONTAINMENT AREA B
 TANKS, VATS & DRUMS IN AREA
 194 DRUMS x 55 GAL. EA. = 10,670 GAL.

TANKS & VATS
 6,000 GAL. + 4,174 GAL. = 10,174 GAL.
 10,670 GAL. + 10,174 GAL. = 20,884 GAL.
 20,884 GAL. x .25 = 5,211 GAL.

AVAILABLE CONTAINMENT AREA B
 40'x44'x1' = 1,760 CU. FT.
 $\frac{x7.481}{2}$
 13,167 GAL.

SUMPS
 2'x2'x2' = 8 CU. FT.
 $\frac{x7.481}{2}$
 60 GAL.

TOTAL
 13,167 GAL. + 60 GAL. = 13,227 GAL.

DEDUCT RAMPS
 $\frac{8'x8'x1'}{2} = 32$ CU. FT.
 $\frac{x7.481}{2}$
 239 GAL.

DEDUCT DRUMS & PALLETS
 MAX. CAP. 192 DRUMS
 96 DRUMS ON FLOOR AREA
 4 DRUMS / PALLET = 24 PALLETS
 2 CU. FT. / PALLET x 24 = 48 CU. FT.
 $\frac{x7.481}{2}$
 359 GAL.

DEDUCT HEIGHT OF DRUM IN CONTAINMENT
 12" - 5" = 7"
 23" Ø DRUM = 1.799 GAL./IN. x 7" = 12.6 GAL./DRUM
 12.6 x 96 = 1,210 GAL.

TOTAL DEDUCT FOR DRUMS & PALLETS IN CONTAINMENT
 359 GAL. + 1,210 GAL. = 1,569 GAL.

DEDUCT TANKS & VATS

DEDUCT FOR TANKS IN CONTAINMENT
 2.04 SQ. FT. x 14'-4" = 29.24 CU. FT. x 2 = 58.48 CU. FT.
 $\frac{x7.481}{2}$
 437 GAL.

DEDUCT FOR VATS IN CONTAINMENT
 2.8 SQ. FT. x 12'-6" x 2 = 70 CU. FT.
 $\frac{x7.481}{2}$
 524 GAL.
 .966 SQ. FT. x 5'-6" x 2 = 10.6 CU. FT.
 $\frac{x7.481}{2}$
 79 GAL.

TOTAL DEDUCT FOR AREA
 239 + 1,569 + 437 + 524 + 79 = 2,848 GAL.

TOTAL AVAILABLE CONTAINMENT AREA B
 13,227 GAL. - 2,848 GAL. = 10,379 GAL.

REFERENCE DRAWINGS		REV.		DESCRIPTION		DATE		APPR. BY		DRAWN		CHECKED		SCALE		DATE		DRAWING NO.		REV.	
2	ROTATE NORTH ARROW 180 DEGREES	KMC	8/20/21	JT																	
1	PROPOSED MERCURY PROCESSING, STAGING & STORAGE	KMC	9/21/20	FRK																	
0	ISSUED	WDS	4/20/10																		
												GRASSY MOUNTAIN <small>THIS DRAWING IS THE PROPERTY OF CLEAN HARBORS. ANY INFORMATION CONTAINED HEREIN MAY NOT BE COPIED OR USED WITHOUT WRITTEN PERMISSION OF OWNER.</small>		TITLE DRAIN & FLUSH BUILDING WAREHOUSE ONE		FIGURE 4A					
										DRAWN WDS		CHECKED FK		SCALE 1/8" = 1'-0"		DATE 2/22/10		DRAWING NO. FIGURE 4A		REV. 2	