



## Attachment II-6-A Contingency Plan Quick Reference Guide

Clean Harbors Grassy Mountain  
3 Miles East, 7 Miles North of Knolls Exit 41 off I-80  
Phone: 435-884-8900  
UTD991301748

### Facility Contact:

Primary Emergency coordinator	Shane Whitney	Mobile Phone (24/7)	801-557-2946
Alternate Emergency coordinator	Blaine Boyer	Mobile Phone (24/7)	801-556-0198
Alternate Emergency coordinator	<del>Steve Wood</del> Ravi Bhide	Mobile Phone (24/7)	<del>801-231-3147</del> 385-377-8663

### On-site Notification/Communication Systems:

The Emergency Coordinator will primarily coordinate with facility personnel through the uses of alarms, telephones, or two-way radios. Facility personnel will report emergencies using phones and radios. If using the facility telephone, dial 9 to access an outside line.

### Water Supply:

Fire hydrants can be seen on the [mMap](#) of the Facility [below](#).

### Response Notes:

- In the case of an emergency, notify and follow the directions of the Emergency Coordinator.
- Use PPE to prevent contact with skin and eyes.
- Respiratory protection may be needed depending on [the](#) situation and chemical involved.
- If personnel come into direct contact with [hazardous](#) materials, [they should](#) decontaminate ~~ion~~ onsite [if possible](#) or at the hospital [if necessary. Decontamination onsite](#) may be required prior to treatment.

### Special Notes to Hospital/Treatment Personnel:

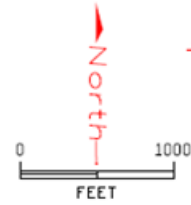
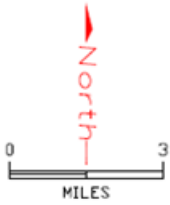
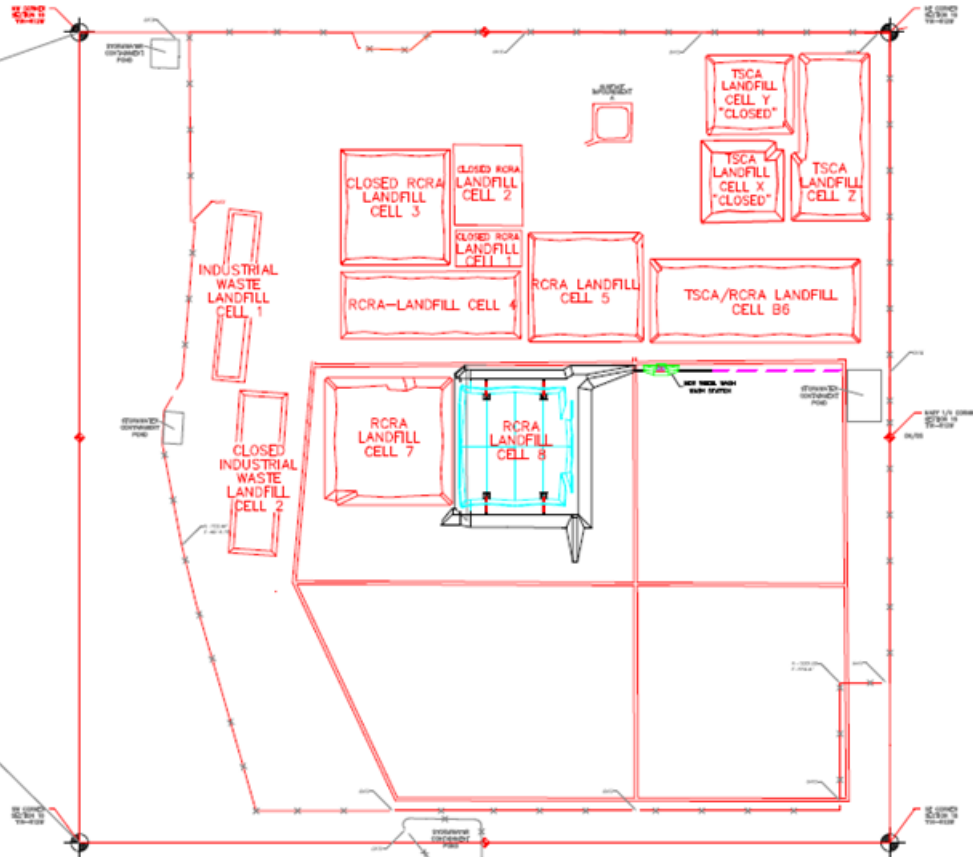
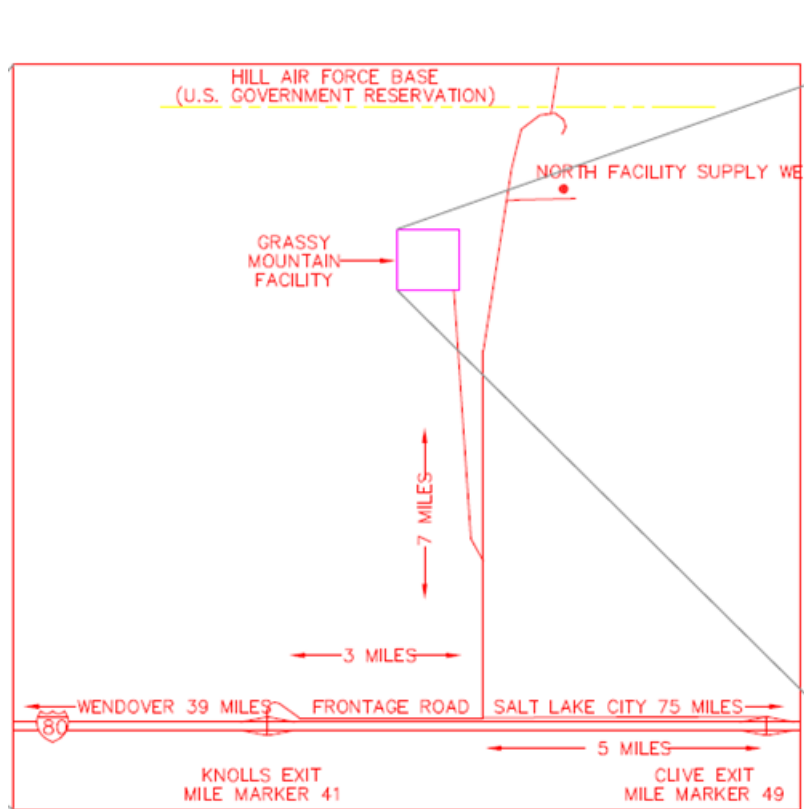
- Contact Emergency Coordinator for information regarding potential chemical exposure.

**Hazardous Waste Information:**

Location	Typical Types of Hazardous Waste Found in These Locations	Waste Codes/Hazards	Potential Maximum Amounts (gallons or another unit information is given)
Dock 1 (Top Dock 1, TD01)	Infectious Waste Ignitable Waste Corrosive Waste Reactive Waste Toxic Waste	D001: Ignitable D002: pH ≤ 2 or ≥12.5 D003: Reactive D004 - D043: Toxic	18,850 gallons or 342 drums
Pad 2 (North Pad or NP01) (South Pad of SP01)	Infectious Waste Corrosive Waste Reactive Waste Toxic Waste	D002: pH ≤ 2 or ≥12.5 D003: Reactive D004 - D043: Toxic	66,000 gallons NP01 – 580 drums SP01 – 620 drums
Pad 3A (Top Dock 2, TD02)	Infectious Waste Corrosive Waste Reactive Waste Toxic Waste	D002: pH ≤ 2 or ≥12.5 D003: Reactive D004 - D043: Toxic	20,900 gallons or 380 drums
Pad 3B (Sample Pad, SPAD)	Infectious Waste Corrosive Waste Reactive Waste Toxic Waste	D002: pH ≤ 2 or ≥12.5 D003: Reactive D004 - D043: Toxic	20,900 gallons or 380 drums
Bulk Solid Storage Area – East (BSSA-E)	Infectious Waste Corrosive Waste Reactive Waste Toxic Waste	D002: pH ≤ 2 or ≥12.5 D003: Reactive D004 - D043: Toxic	600 cubic yards (30-20 yd boxes)
Bulk Solid Storage Area – West (BSSA-W)	Infectious Waste Corrosive Waste Reactive Waste Toxic Waste	D002: pH ≤ 2 or ≥12.5 D003: Reactive D004 - D043: Toxic	1,600 cubic yards (80-20 yd boxes)
Heat Tent - Large	Corrosive Waste Toxic Waste	D002: pH ≤ 2 or ≥12.5 D004 - D043: Toxic	280 cubic yards (14-20 yd boxes)

Location	Typical Types of Hazardous Waste Found in These Locations	Waste Codes/Hazards	Potential Maximum Amounts (gallons or another unit information is given)
Waste Stabilization Tanks 122-TN-001 122-TN-002 122-TN-003	Corrosive Waste Toxic Waste	D002: pH ≤ 2 or ≥12.5 D004 - D043: Toxic	3 tanks with <del>23,936-gallon</del> 23,936-gallon capacity
Leachate Storage Tank 119-TN-002	Corrosive Waste Toxic Waste	D002: pH ≤ 2 or ≥12.5 D004 - D043: Toxic F039	17,000 gallons
Drain and Flush Building Warehouse One	Mercury Containing Waste and Elemental Mercury	D009: Mercury	Area A1 – 17,600 gallons Area A2 – 7,040 gallons Area A3 – 3,080 gallons Area A4 – 5,720 gallons
Landfills	Infectious Waste Corrosive Waste Toxic Waste	D002: pH ≤ 2 or ≥12.5 D004 - D043: Toxic	Cell B/6 – 1,125,000 cubic yards Cell 7 – 1,106,000 cubic yards Cell 8 – 785,300 cubic yards

# Street Map



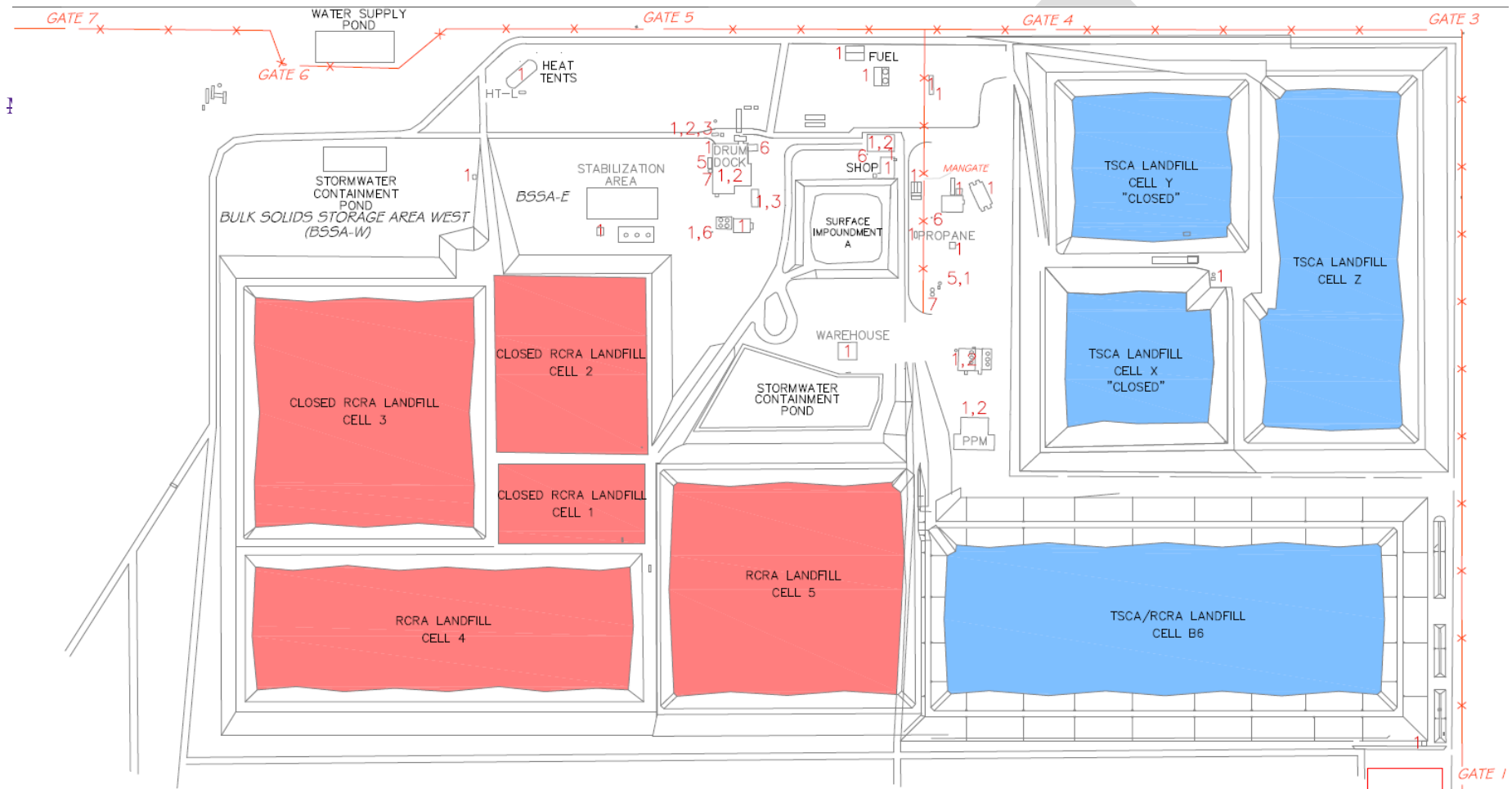
## Street Map in Relation to Surrounding Businesses, Residences and Schools

There are no residences or schools within 25 miles of the facility. The nearest business is Clean Harbors Clive, another hazardous waste management facility (15 miles).



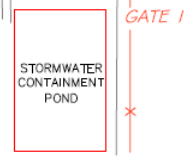
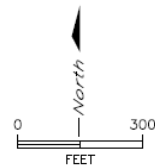


# Facility Map – Northern Portion

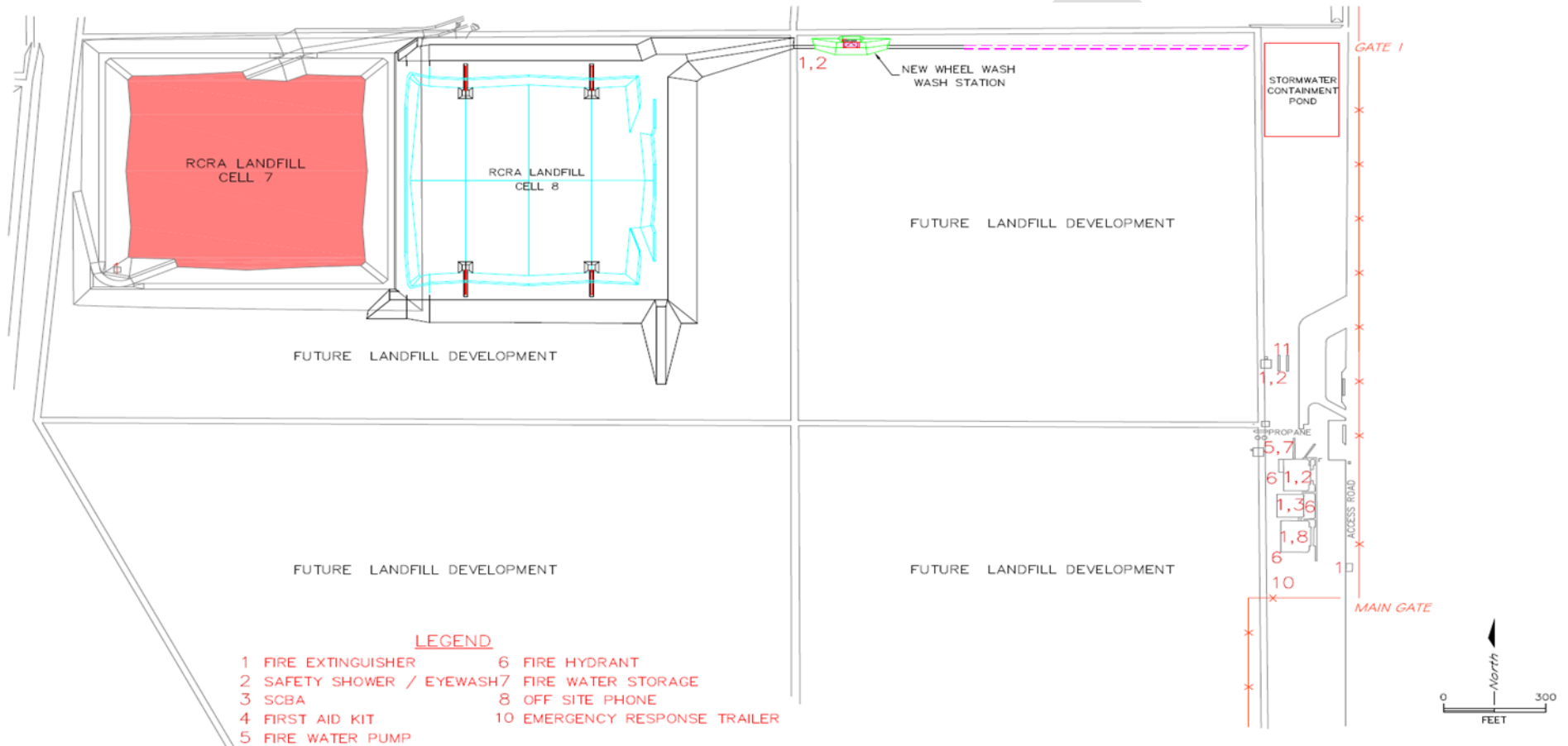


**LEGEND**

- |                           |                               |
|---------------------------|-------------------------------|
| 1 FIRE EXTINGUISHER       | 6 FIRE HYDRANT                |
| 2 SAFETY SHOWER / EYEWASH | 7 FIRE WATER STORAGE          |
| 3 SCBA                    | 8 OFF SITE PHONE              |
| 4 FIRST AID KIT           | 9 CB BASE STATION             |
| 5 FIRE WATER PUMP         | 10 EMERGENCY RESPONSE TRAILER |



# Facility Map - Southern Portion



# Facility Evacuation Map

