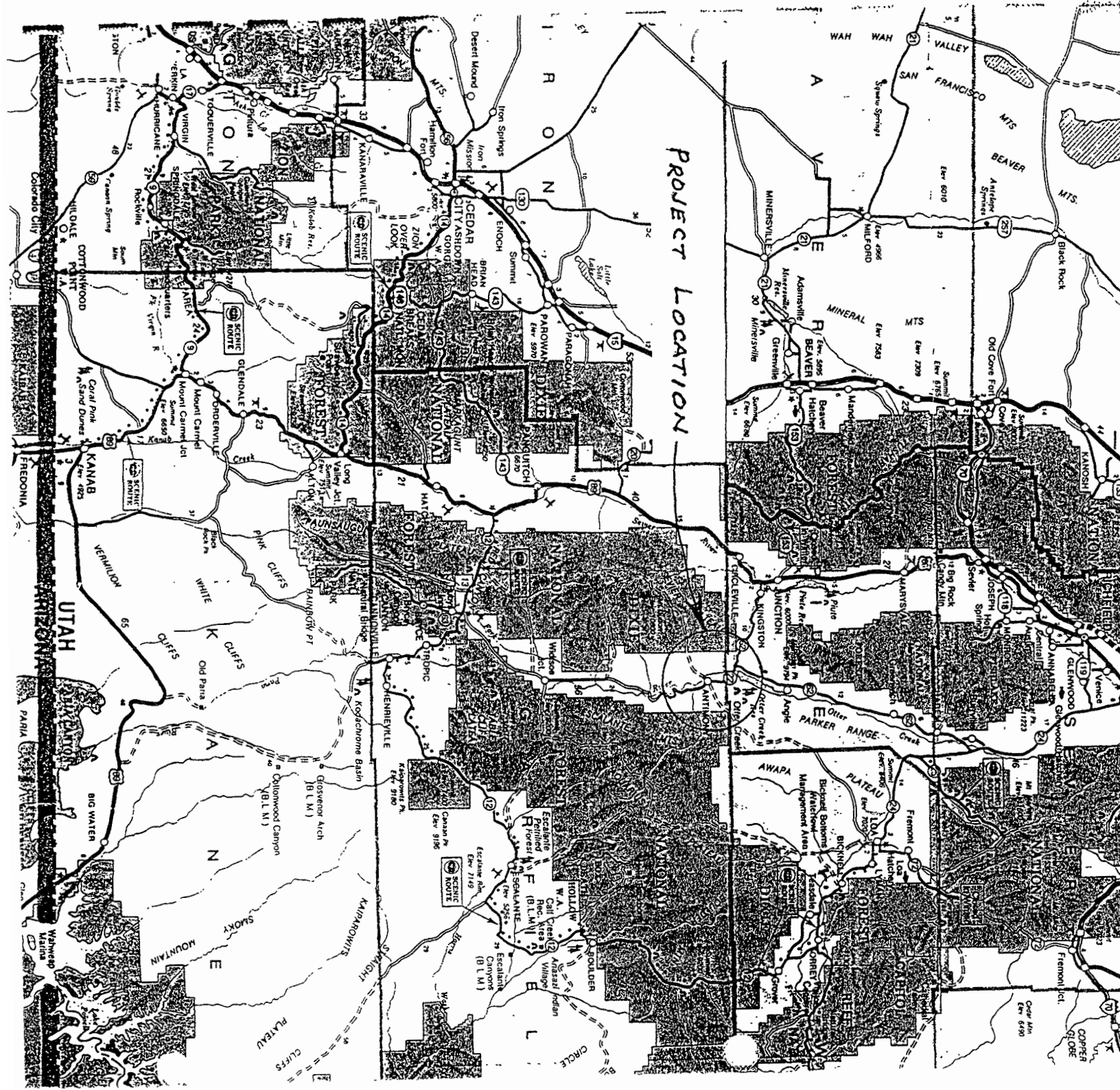
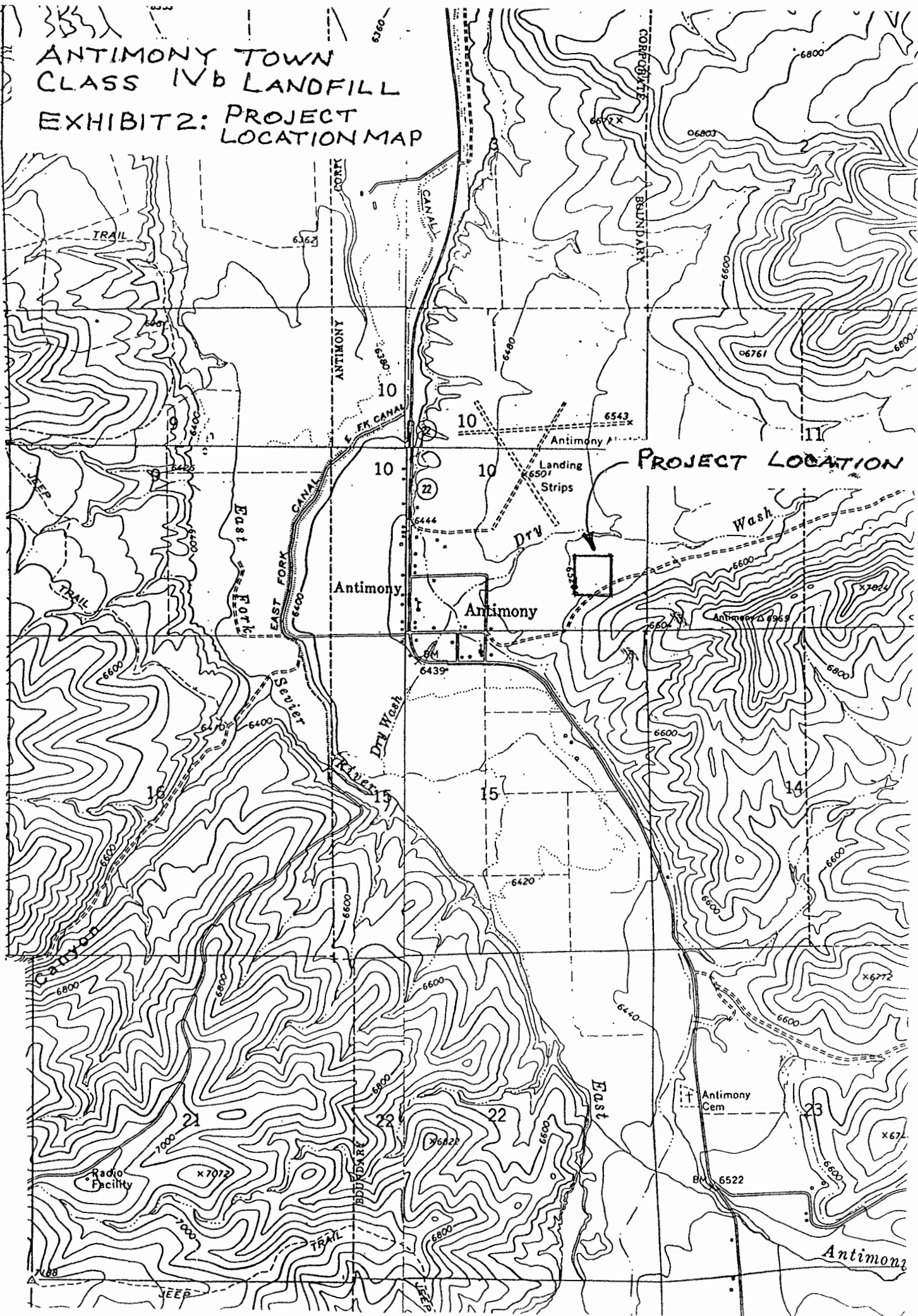


# Antimony Town Permit Attachment #1: Design and Location



355  
ANTIMONY TOWN  
CLASS IVb LANDFILL  
EXHIBIT 2: PROJECT  
LOCATION MAP



PROJECT LOCATION

Antimony

Antimony

Antimony Cem

Radio Facility

Antimony

TRAIL

JEEP

TRAIL

East Fork

Sevier

Dry Wash

Dry

Wash

East

ANTIMONY

CANAL

E. F.W. CANAL

CORRIDOR

BOUNDARY

BOUNDARY

TRAIL

JEEP

6360

6800

06803

6600

06761

6600

6679 X

6543

Antimony A

Landing Strips

6444

Antimony B

6439

Antimony C

6495

6800

14

6600

0690

6600

6600

6600

6600

6600

x7024

6800

15

6600

0690

6600

6600

6600

6600

6600

x7024

6800

15

6600

0690

6600

6600

6600

6600

6600

x7024

6800

15

6600

0690

6600

6600

6600

6600

6600

x7024

6800

15

6600

0690

6600

6600

6600

6600

6600

x7024

6800

15

6600

0690

6600

6600

6600

6600

6600

x7024

6800

15

6600

0690

6600

6600

6600

6600

6600

x7024

6800

15

6600

0690

6600

6600

6600

6600

6600

x7024

6800

15

6600

0690

6600

6600

6600

6600

6600

x7024

6800

15

6600

0690

6600

6600

6600

6600

6600

x7024

6800

15

6600

0690

6600

6600

6600

6600

6600

x7024

6800

15

6600

0690

6600

6600

6600

6600

6600

x7024

6800

15

6600

0690

6600

6600

6600

6600

6600

x7024

6800

15

6600

0690

6600

6600

6600

6600

6600

x7024

6800

15

6600

0690

6600

6600

6600

6600

6600

x7024

6800

15

6600

0690

6600

6600

6600

6600

6600

x7024

6800

15

6600

0690

6600

6600

6600

6600

6600

x7024

6800

15

6600

0690

6600

6600

6600

6600

6600

x7024

6800

15

6600

0690

6600

6600

6600

6600

6600

x7024

6800

15

6600

0690

6600

6600

6600

6600

6600

x7024

6800

15

6600

0690

6600

6600

6600

6600

6600

x7024

6800

15

6600

0690

6600

6600

6600

6600

6600

x7024

6800

15

6600

0690

6600

6600

6600

6600

6600

x7024

6800

15

6600

0690

6600

6600

6600

6600

6600

x7024

6800

15

6600

0690

6600

6600

6600

6600

6600

x7024

6800

15

6600

0690

6600

6600

6600

6600

6600

x7024

6800

15

6600

0690

6600

6600

6600

6600

6600

x7024

6800

15

6600

0690

6600

6600

6600

6600

6600

x7024

6800

15

6600

0690

6600

6600

6600

6600

6600

x7024

6800

15

6600

# The United States of America

To all to whom these presents shall come, Greeting:

Utah 71137-03

*W. C. ...*  
*9/15/95*

WHEREAS,

Antimony Town, Utah

is entitled to a land patent pursuant to the Recreation and Public Purposes Act of June 14, 1926 (44 Stat. 741), as amended and supplemented (43 U.S.C. 869; et. seq.), for the following described land:

Salt Lake Meridian, Utah

T. 31 S., R. 2 W.,

sec. 10, NW $\frac{1}{4}$ SE $\frac{1}{4}$ SE $\frac{1}{4}$ .

containing 10.00 acres

NOW KNOW YE, that the UNITED STATES OF AMERICA, in consideration of the premises, and in conformity with said Act of Congress, HAS GIVEN AND GRANTED, and by these presents DOES GIVE AND GRANT unto the said Antimony Town, Utah, the land above described for use as a solid waste transfer station: TO HAVE AND TO HOLD the same, together with all rights, privileges, immunities, and appurtenances, of whatsoever nature, unto belonging, unto the same Antimony Town, Utah, forever; and

EXCEPTING AND RESERVING TO THE UNITED STATES:

1. A right-of-way thereon for ditches or canals constructed by the authority of the United States. Act of August 30, 1890 (43 U.S.C. 945).
2. All minerals, including oil and gas, with the right to prospect for, mine and remove the same. The Secretary of the Interior reserves the right to determine whether such mining and removal of minerals will interfere with the development, operation and maintenance of the transfer station.

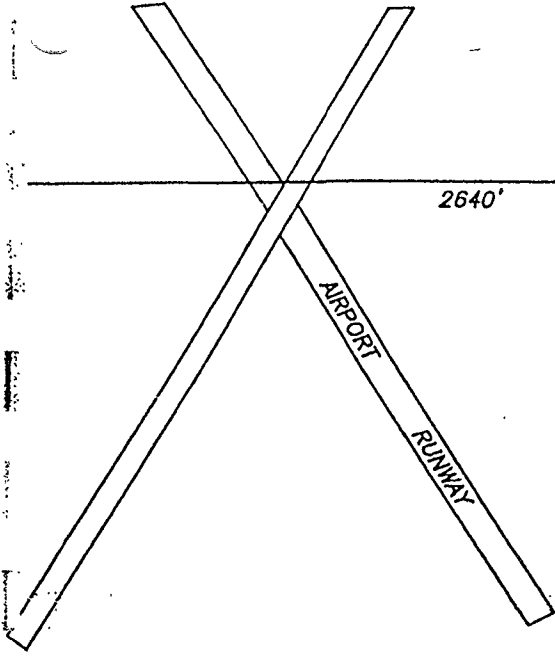
Antimony Town, Utah, its successors or assigns, assumes all liability for and shall defend, indemnify, and save harmless the United States and its officers, agents, representatives, and employees (hereinafter referred to in this clause as the United States), from all claims, loss, damage, actions, causes of action, expense, and liability (hereinafter referred to in this clause as claims) resulting from, brought for, or on account of, any personal injury, threat of personal injury, or property damage received or sustained by any person or persons (including the patentee's employees) or property growing out of, occurring, or attributable directly or indirectly, to the disposal of solid waste on, or the release of hazardous substances from T. 31 S., R. 2 W., SLM, sec. 10, NW $\frac{1}{4}$ SE $\frac{1}{4}$ SE $\frac{1}{4}$ , regardless of whether such claims shall be attributable to: (1) the concurrent, contributory, or partial fault, failure, or negligence of the United States, or (2) the sole fault, failure, or negligence of the United States.

ANTIMONY TOWN  
CLASS IVb LANDFILL

EXHIBIT 3: PROPERTY  
PATENT

Patent Number 43-95-0018

TRUSTEE  
A-23  
149.70 Ac.



ANTIMONY TOWN  
CLASS 1Y6 LANDFILL  
EXHIBIT 1: PROPL. PLAT

CEDAR LAND TITLE, INC.  
TRUSTEE  
A-38  
114.76 Ac.

N88°53'39"E 657.34'

ANTIMONY TOWN  
A-38-1  
9.99 Ac.



S88°49'46"W 656.49'

N0°09'01"W 662.89'

S0°04'31"E 662.16'

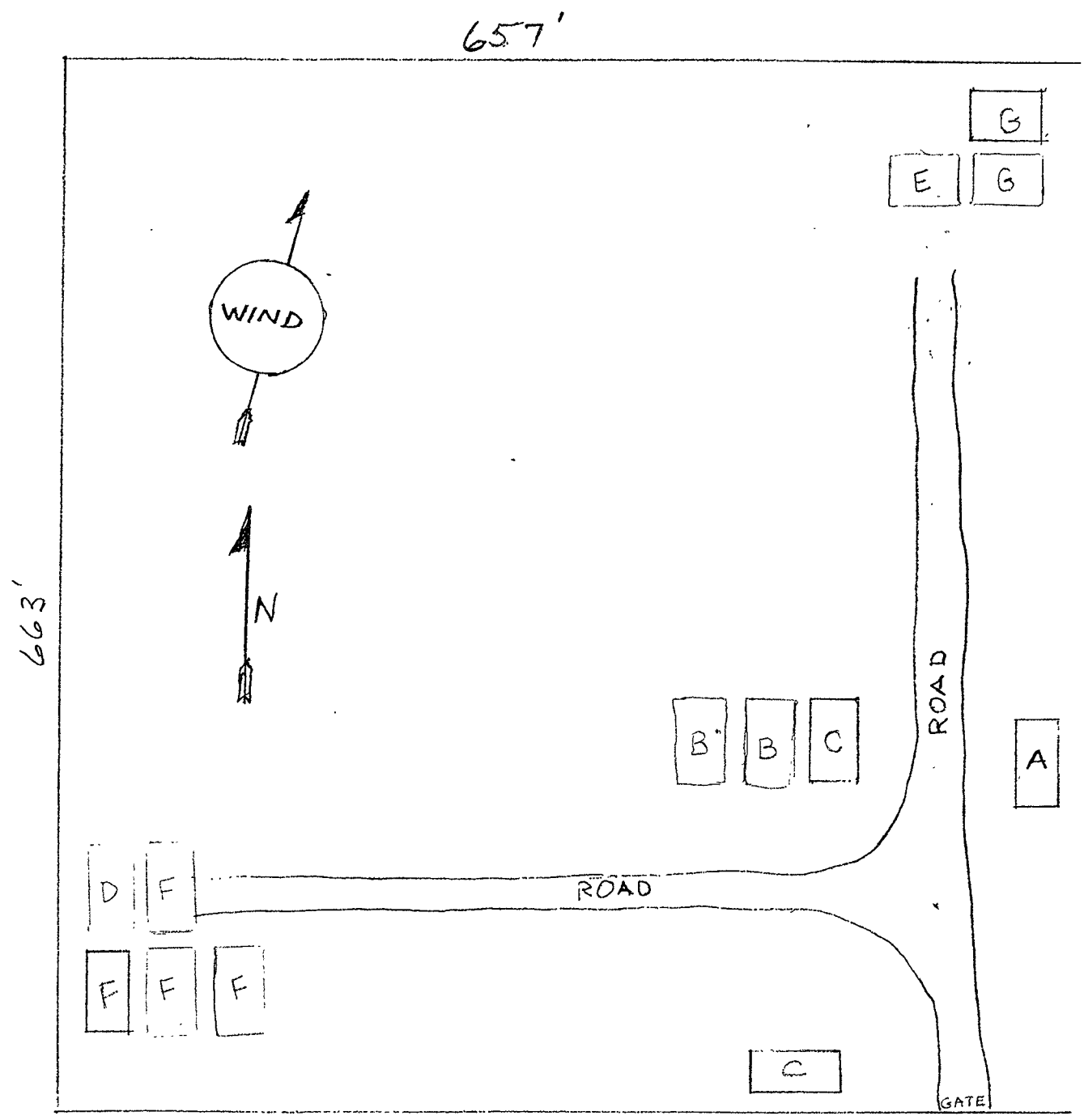
U.S.A.

466.13'  
LEWIS KIRT ROBINSON  
A-14  
4.99 Ac.  
466.13'

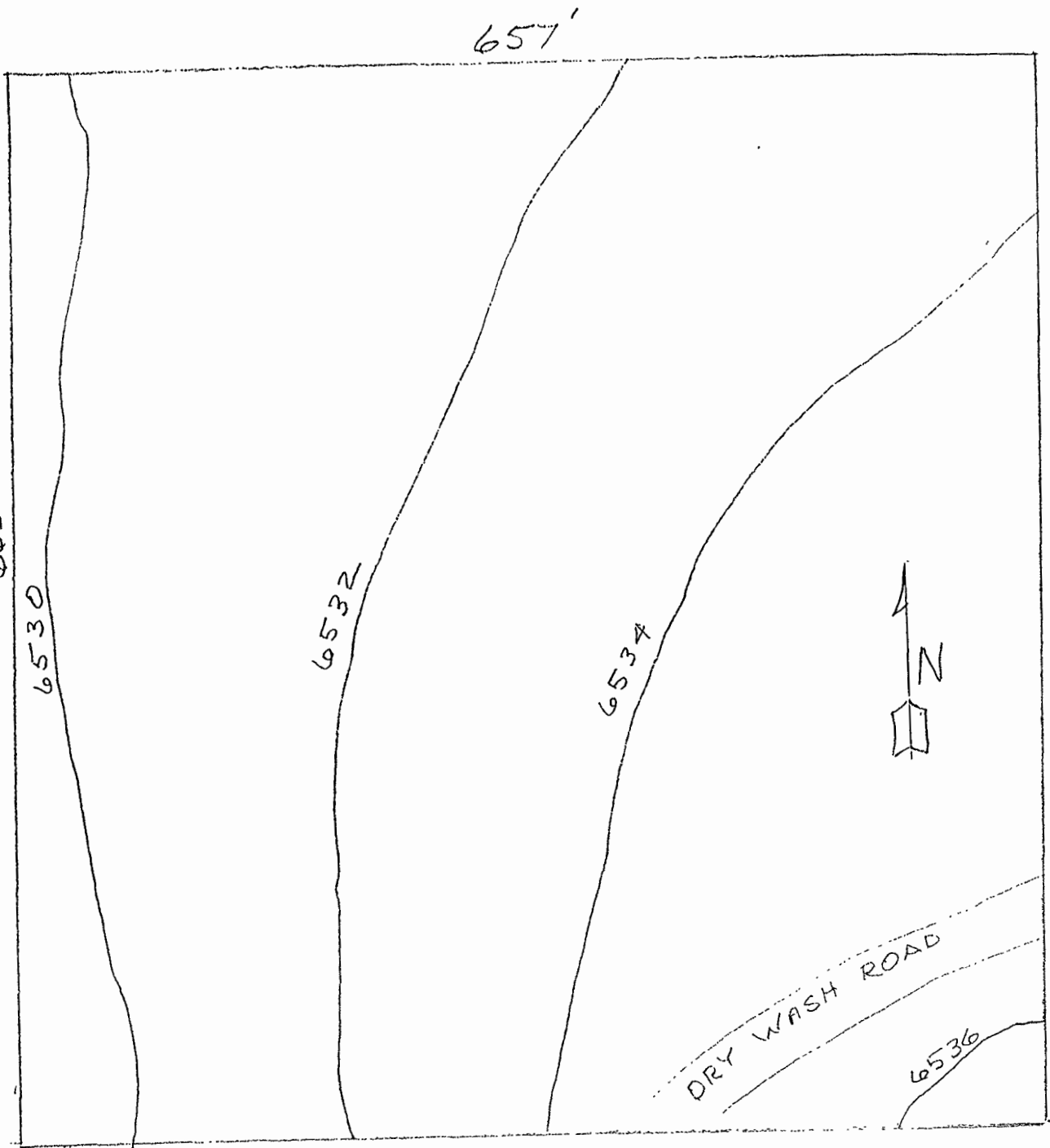
820.87'

U.S.T.C. PROVAL	PLAT DEPARTMENT	ANTIMONY TOWN	BOOK PAGE
	GARFIELD COUNTY, UTAH	SECTION 10 T.91S. R.02W.	A-3
	DRAWN BY: L.B.	DATE: 0-96	SCALE: 1"=400'

ANTIMONY TOWN  
 CLASS IVb LANDFILL  
 Exhibit #5 CURRENT LANDFILL STATUS



- Scale: 1 in. = 100 ft.
- A = Metal Storage (30' X 60') (200 sq. yds.)
  - B = Clean Green Yard Waste (10' X 50') (55 sq. yds.)
  - C = Previously Used Yard Waste (10' X 50') (55 sq. yds.)
  - D = Construction / Demolition Waste (10' X 50') (55 sq. yds.)
  - E = Dead Animal Pit (10' X 30') (33 sq. yds.)
  - F = Previously Used Demolition Waste (10' X 50') (55 sq. yds.)
  - G = Previously Used Dead Animal Pit (10' X 30') (33 sq. yds.)

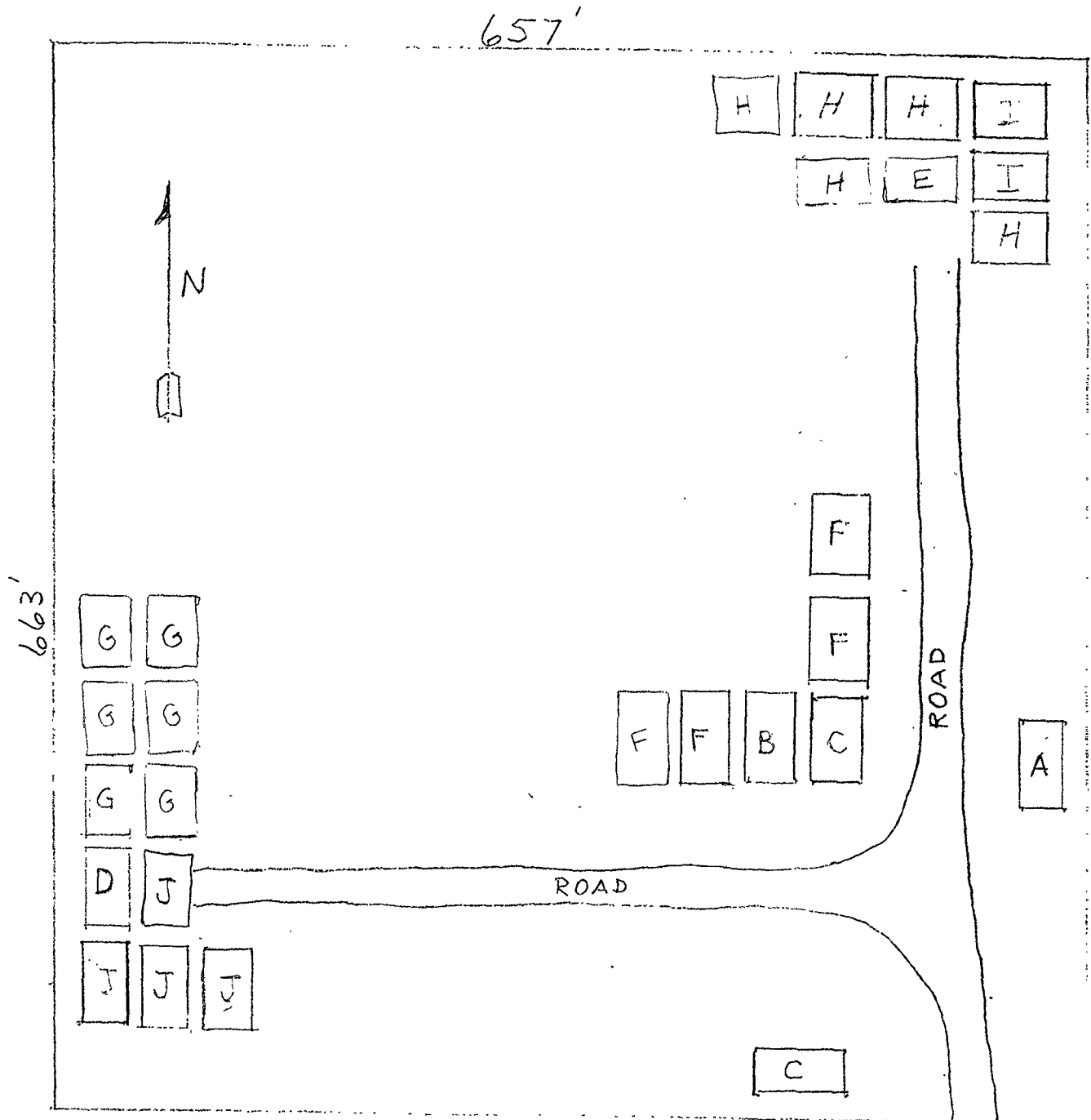


ANTIMONY TOWN  
 CLASS IVB LANDFILL  
 TOPOGRAPHIC SKETCH  
 JUNE 2001

APPROX. SCALE: 1" = 100'  
 DATE: JUNE 2001  
 DRAWN BY:  
 TOBY TORRESOW

EXHIBIT 6

ANTIMONY TOWN  
 CLASS IVb LANDFILL  
 Exhibit #7 FUTURE DEVELOPMENT



Scale: 1 in. = 100 ft.

- A = Metal Storage (30' X 60') (200 sq. yds.)
- B = Clean Green Yard Waste (10' X 50') (55 sq. yds.)
- C = Previously Used Yard Waste (10' X 50') (55 sq. yds.)
- D = Construction / Demolition Waste (10' X 50') (55 sq. yds.)
- E = Dead Animal Pit (10' X 30') (33 sq. yds.)
- F = Future Yard Waste Site (10' X 50') (55 sq. yds.)
- G = Future Construction Waste Site (10' X 50') (55 sq. yds.)
- H = Future Dead Animal Site (10' X 30') (33 sq. yds.)
- I = Previously Used Dead Animal Pit
- J = Previously Used Construction Demolition Pit