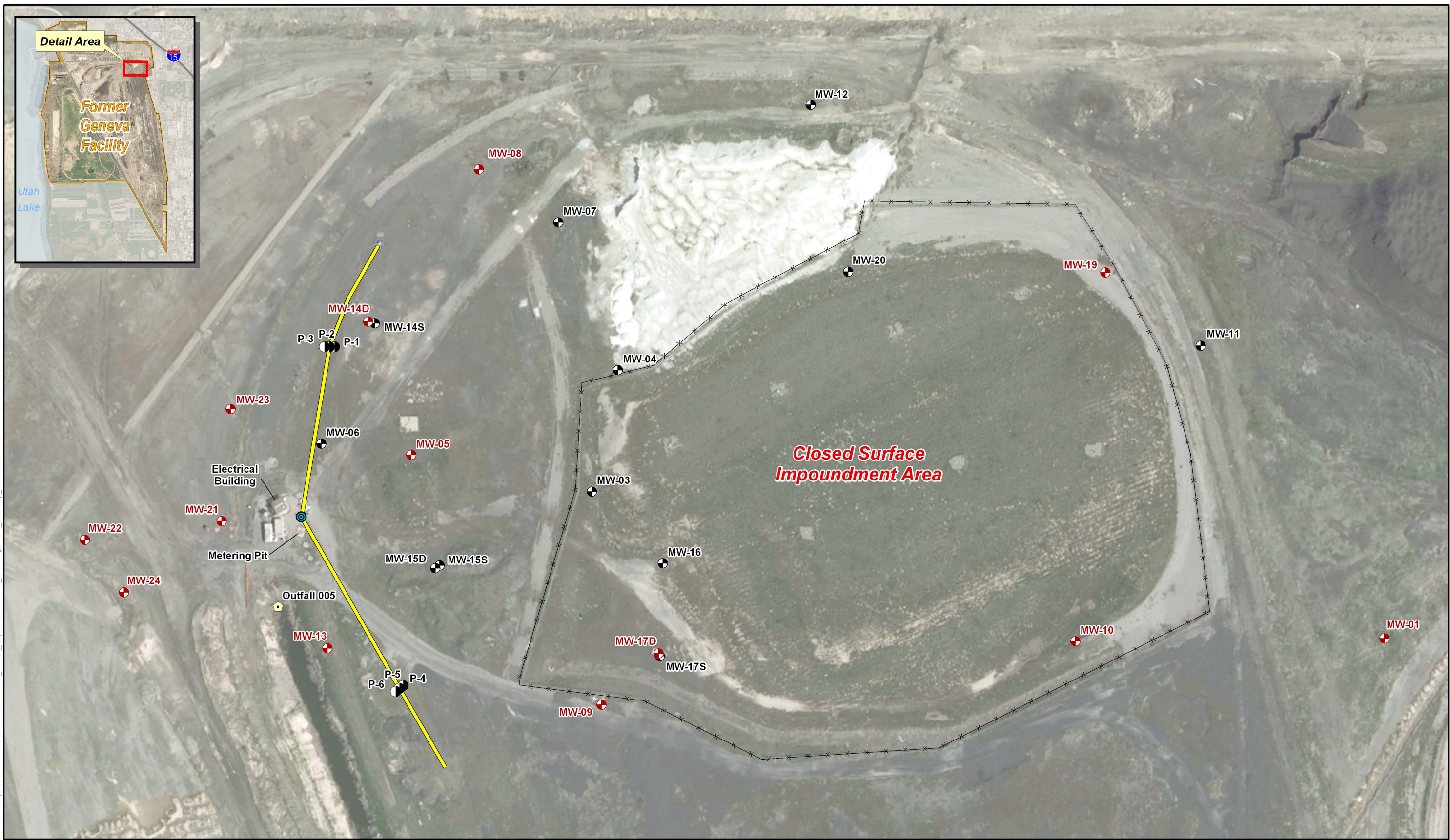


Attachment 3

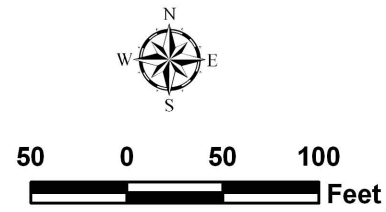
- Map with Closed hazardous waste impoundment monitoring wells
- Map with SWMU locations and approximate groundwater plume locations

File: X:\Projects\USS-Geneva\GIS\Hazardous_Waste_Impoundment\Fall_2009\FigCHWI_Sitemap_Fall09.mxd

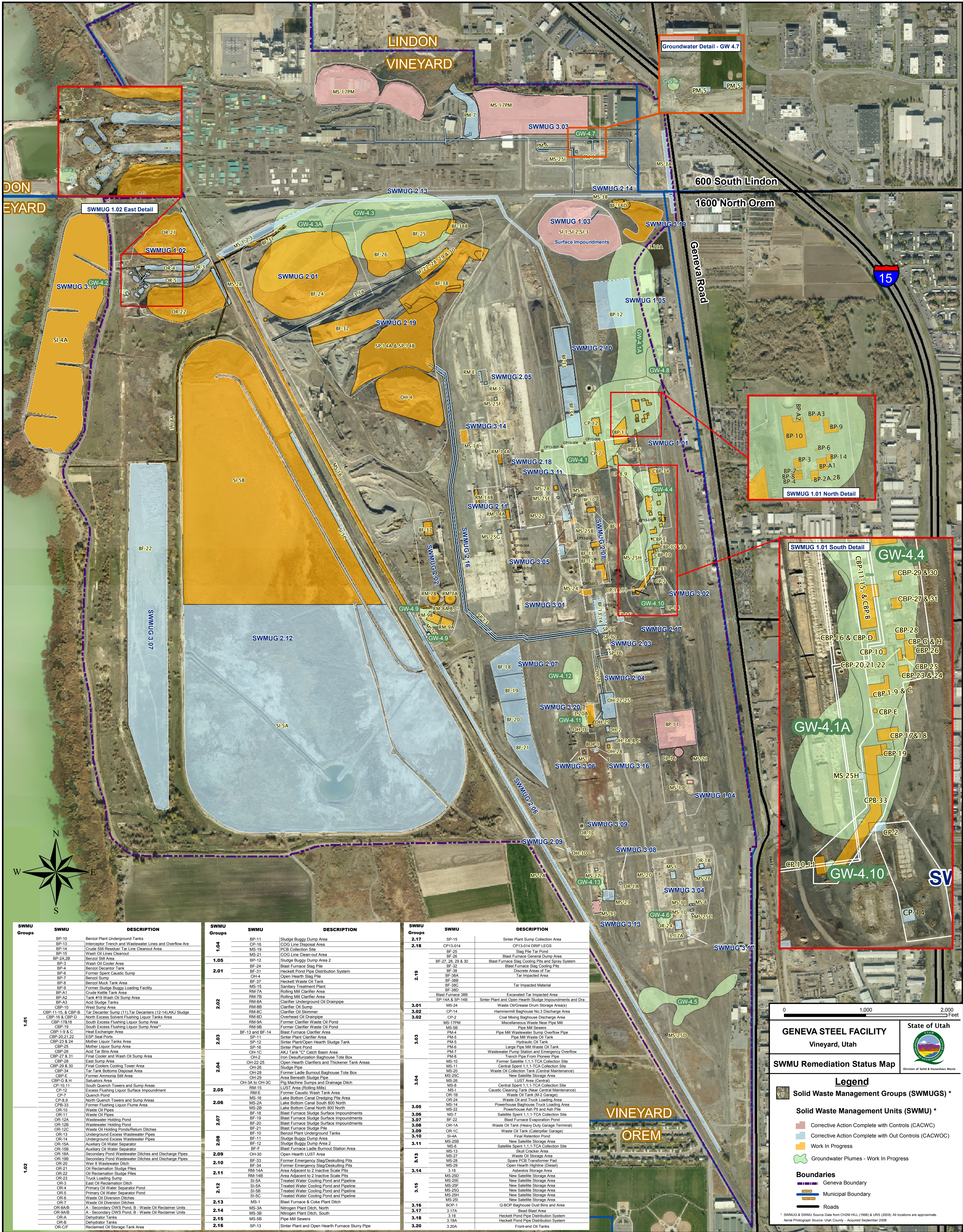


Aerial Source: AGRC 2009 High Resolution Ortho-Imagery 1 Foot

| | | | |
|--|---|--|--------|
| | Piezometer | | Sump |
| | UPDES Outfall 005 | | Trench |
| | Monitoring Well | | Fence |
| | Monitoring Well (Sampled during semi-annual groundwater sampling event) | | |



Site Map and Monitoring Locations
Hazardous Waste Impoundments
Former Geneva Steel Facility
Vineyard, Utah



| SWMU Groups | SWMU | DESCRIPTION |
|-------------|-------------------|---|
| 1.01 | BP-10 | Benzoil Plant Underground Tanks |
| | BP-13 | Interceptor Trench and Wastewater Lines and Overflow Area |
| | BP-14 | Crude Oil Residual Tar Line Cleanout Area |
| | BP-15 | Wash Oil Lines Cleanout |
| | BP-2A,2B | Benzoil Still Area |
| | BP-3 | Wash Oil Cooler Area |
| | BP-4 | Benzoil Decanter Tank |
| | BP-6 | Former Spent Caustic Sump |
| | BP-7 | Benzoil Sump |
| | BP-8 | Benzoil Muck Tank Area |
| 1.02 | BP-9 | Former Sludge Buggy Loading Facility |
| | BP-A1 | Crude Kettle Tank Area |
| | BP-A2 | Tank #19 Wash Oil Sump Area |
| | BP-A3 | Acid Sludge Tanks |
| | CBP-10 | West Sump Area |
| | CBP-11,15 & CBP-B | Tar Decanter Sump (11), Tar Decanters (12-14) AKJ Sludge |
| | CBP-16 & CBP-D | North Excess Solvent Flushing Liquor Tanks Area |
| | CBP-17&18 | South Excess Flushing Liquor Sump Area |
| | CBP-19 | South Excess Flushing Liquor Sump Area** |
| | CBP-19 & C | Heat Exchanger Area |

| SWMU Groups | SWMU | DESCRIPTION |
|-------------|-------|---------------------------------------|
| 1.04 | BP-11 | Sludge Buggy Dump Area |
| | CP-16 | COG Line Disposal Area |
| | MS-19 | PCB Collection Site |
| | MS-21 | COG Line Clean-out Area |
| | BP-12 | Sludge Buggy Dump Area 2 |
| 2.01 | BF-24 | Blast Furnace Slag Pile |
| | BF-31 | Hockett Pond Pipe Distribution System |
| | OH-4 | Open Hearth Slag Pile |
| | BF-37 | Hockett Waste Oil Tank |
| | MS-15 | Sanitary Treatment Plant |
| | RM-7A | Rolling Mill Clarifier Area |
| | RM-7B | Rolling Mill Clarifier Area |
| | RM-8A | Clarifier Underground Oil Drainage |
| | RM-8B | Clarifier Oil Sump |
| | RM-8C | Clarifier Oil Skimmer |

| SWMU Groups | SWMU | DESCRIPTION |
|-------------|--------------------|--|
| 2.17 | SP-15 | Sinter Plant Sump Collection Area |
| | CP-13,14 | CP-13,14 BOP 1405 |
| | BF-25 | Slag Pile Tar Pond |
| | BF-26 | Blast Furnace General Dump Area |
| | BF-27, 28, 29 & 30 | Blast Furnace Slag Cooling Pits and Slurry System |
| | BF-32 | Blast Furnace Slag Cooling Pits |
| | BF-36 | Discrete Areas of Tar |
| | BF-38A | Tar Impacted Area |
| | BF-38B | Tar Impacted Material |
| | BF-38D | Excavated Tar Impacted Area |
| 3.01 | MS-24 | Sinter Plant and Open Hearth Sludge Impoundments and Discharge |
| | CP-14 | Waste Oil/Grease Drum Storage Area(s) |
| | CP-14 | Hammermill Baghouse No. 3 Discharge Area |
| | CP-7 | Coal Milling Baghouse Discharge Area |
| | MS-28 | Miscellaneous Waste Near Pipe Mill |
| | PM-4 | Pipe Mill Wastewater Sump Overflow Pipe |
| | PM-5 | Pipe Mill Waste Oil Tank |
| | PM-6 | Large Pipe Mill Waste Oil Tank |
| | PM-7 | Wastewater Pump Station and Emergency Overflow |
| | PM-8 | Trench Pipe From Pioneer Pipe |

010002000

GENEVA STEEL FACILITY
Vineyard, Utah

SWMUG Remediation Status Map

State of Utah

Division of Solid & Hazardous Waste

Legend

Solid Waste Management Groups (SWMUGS) *

Solid Waste Management Units (SWMU) *

Corrective Action Complete with Controls (CACWC)

Corrective Action Complete with Out Controls (CACWOC)

Work in Progress

Groundwater Plumes - Work in Progress

Boundaries

Geneva Boundary

Municipal Boundary

Roads

* SWMUG & SWMU Source Data from CH2M HILL (1996) & URS (2009). All locations are approximate.

Aerial Photograph Source: Utah County - Acquired September 2008