

8.1. INTRODUCTION

The Sevier River Watershed Management Unit includes all streams located in the USGS Hydrological Units (HUCs) listed in Table 8-1. Some of the major streams within unit are the Sevier River, San Pitch River, Otter Creek, Salina Creek, and the East Fork Sevier River.

Biological, water chemistry and field data collected from January 1, 2004 through December 31, 2008 were used to make assessments. Water quality data were compared against standards established for each of the designated beneficial uses. Figure 8-1 shows the beneficial use classifications for this watershed.

8.2 IMPAIRED WATERS

The list of streams and lakes impaired and requiring a TMDL (Category 5; Section 303d) for the Sevier River Watershed are presented in Table 8-2. New listings for 2010 include East Fork Sevier-3, Sevier River-20, Parowan Creek, Navajo Lake, Piute Reservoir, and Koosharem Reservoir. No lakes or streams are being removed from the 303d list this assessment cycle. Assessment results for all AUs for streams are presented in Table 8-3 and for lakes in Table 8-4. Lake assessments are further discussed in the next section.

8.3 LAKE ASSESSMENTS

Water quality assessment for lakes includes determination of Carlson's trophic state index (TSI), water chemistry, phytoplankton species dominance, reported fish kills, and water quality trends.

Table 8-5 shows TSIs based on each sample collected from May through September by sample date. Table 8-6 contains a summary of lake trophic status by study periods. Note that some of the changes in TSIs between assessment periods is due to the variability in the lakes and reservoirs and some is due to switching methodologies between 2008 and 2010. The reported TSI for 2010 is based on Chl-a whereas prior reporting cycles averaged the TSI based on secchi disk depth (TSI-SD), Chl-a (TSI-Chla), and total phosphorus (TSI-TP). Table 8-6 includes the TSIs using both the 2008 and 2010 method using the 2010 data.

TSI values for some lakes and reservoirs differed between the 2008 and 2010 methods. Small differences are defined as a difference in TSIs of 6-10, medium differences 11-20, and large differences as greater than 20. Medium differences were observed for Piute Reservoir and large differences were observed for Koosharem Reservoir. The lack of significant differences suggests little difference in trophic state between the new and older methods for most lakes.

Koosharem Reservoir changed from mesotrophic in the 2008 IR to oligotrophic in 2010 with TSIs of 57 and 25, respectively. Using the 2008 IR method for calculating the TSI, the reservoir would remain classified as mesotrophic for 2010 with a TSI of 52. This indicates that the reduction in trophic classification is an artifact of changing the methodology between 2008 and 2010. Koosharem Reservoir is on the 303d list for total phosphorus and total phosphorus is elevated at 0.15 µg/L. As shown in Table 8-6, TSI-SD is much higher, and to a lesser extent

TSI-TP, when compared to TSI-Chla. This suggests, along with the fully-supporting parameter of pH, that an oligotrophic classification is appropriate for Koosharem Reservoir.

For the purpose of assessing trends, the TSI's from the most recent five assessment periods were considered. Consistent trends that resulted in a net TSI change of five or changes greater than 10 between 2008 and 2010, which are not attributable to the change in TSI methodology alone, are identified. Lower Box Creek Reservoir exhibits a decreasing trend for TSI.

8.4 HEALTH ADVISORIES

The East Fork of the Sevier River has a fish consumption advisory for mercury.

TABLES

Table 8-1 Hydrological Unit Codes and Names

Hydrological Unit Codes and Names	
Hydrological Unit Code	Hydrological Unit Name
16030001	Upper Sevier
16030002	East Fork Sevier
16030003	Middle Sevier
16030004	San Pitch
16030005	Lower Sevier
16030009	Sevier Lake

Table 8-2 Impaired Streams and Lakes Requiring a TMDL – Sevier River Watershed

Impaired Streams and Lakes Requiring a TMDL - Sevier River Watershed				
AU ID	AU Name	Water Type	Size	Location Description
UT16030001-002_00	Sevier River-4	RIVER	16.208 MILES	Sevier River and tributaries from Piute Reservoir to Circleville Irrigation Diversion, excluding East Fork Sevier River and tributaries
Cause	Cycle First Listed	TMDL Status	Use	Source
Temperature, water	2008	Low Priority	Cold Water Aquatic Life	<ul style="list-style-type: none"> • Source Unknown

Impaired Streams and Lakes Requiring a TMDL - Sevier River Watershed

AU ID	AU Name	Water Type	Size	Location Description
UT16030001-005_00	Sevier River-3	RIVER	20.66 MILES	Sevier River and tributaries from Circleville Irrigation Diversion to Horse Valley Diversion
Cause	Cycle First Listed	TMDL Status	Use	Source
Temperature, water	2008	Low Priority	Cold Water Aquatic Life	• Source Unknown
AU ID	AU Name	Water Type	Size	Location Description
UT16030001-012_00	Sevier River-1	RIVER	28.607 MILES	Sevier River and tributaries from Long Canal to Mammoth Creek confluence
Cause	Cycle First Listed	TMDL Status	Use	Source
Temperature, water	2008	Low Priority	Cold Water Aquatic Life	• Source Unknown
AU ID	AU Name	Water Type	Size	Location Description
UT16030001-013_00	Piute	RIVER	4.036 MILES	Piute Reservoir tributaries below USFS boundary and excluding Sevier River inlet
Cause	Cycle First Listed	TMDL Status	Use	Source
Benthic-Macroinvertebrate Bioassessments	2008	Low Priority	Cold Water Aquatic Life	• Source Unknown

Impaired Streams and Lakes Requiring a TMDL - Sevier River Watershed

AU ID	AU Name	Water Type	Size	Location Description
UT16030001-014_00	Threemile Creek	RIVER	19.91 MILES	Threemile Creek and other Sevier River west side tributaries from Horse Valley Diversion upstream to Long Canal, excluding Panquitch and Bear Creeks
Cause	Cycle First Listed	TMDL Status	Use	Source
Temperature, water	2008	Low Priority	Cold Water Aquatic Life	• Source Unknown
AU ID	AU Name	Water Type	Size	Location Description
UT16030002-001_00	Otter Creek-4	RIVER	18.583 MILES	Otter Creek and tributaries from Koosharem Reservoir to headwaters
Cause	Cycle First Listed	TMDL Status	Use	Source
Temperature, water	2008	Low Priority	Cold Water Aquatic Life	• Source Unknown
AU ID	AU Name	Water Type	Size	Location Description
UT16030002-002_00	Otter Creek-1	RIVER	59.82 MILES	Otter Creek and tributaries from Otter Creek Reservoir to Koosharem Reservoir, except Box and Greenwich Creeks
Cause	Cycle First Listed	TMDL Status	Use	Source

Impaired Streams and Lakes Requiring a TMDL - Sevier River Watershed

Temperature, water	2008	Low Priority	Cold Water Aquatic Life	• Source Unknown
AU ID	AU Name	Water Type	Size	Location Description
UT16030002-005_00	East Fork Sevier River-4	RIVER	25.741 MILES	East Fork Sevier River and tributaries from confluence with Sevier River upstream to Antimony Creek confluence, excluding Otter Creek and tributaries
Cause	Cycle First Listed	TMDL Status	Use	Source
Temperature, water	2006	Low Priority	Cold Water Aquatic Life	• Source Unknown
AU ID	AU Name	Water Type	Size	Location Description
UT16030002-006_00	East Fork Sevier-3	RIVER	21.292 MILES	East Fork Sevier River and tributaries from Antimony Creek confluence to Deer Creek confluence
Cause	Cycle First Listed	TMDL Status	Use	Source
Benthic-Macroinvertebrate Bioassessments	2010	Low Priority	Cold Water Aquatic Life	• Source Unknown
AU ID	AU Name	Water Type	Size	Location Description
UT16030003-017_00	Sevier River-6	RIVER	28.062 MILES	Sevier River from Clear Creek confluence to HUC unit 1603003-1603001 boundary

Impaired Streams and Lakes Requiring a TMDL - Sevier River Watershed

Cause	Cycle First Listed	TMDL Status	Use	Source
Temperature, water	2006	Low Priority	Cold Water Aquatic Life	<ul style="list-style-type: none"> • Source Unknown
AU ID	AU Name	Water Type	Size	Location Description
UT16030004-009_00	San Pitch-5	RIVER	65.657 MILES	San Pitch River and tributaries from U-132 to Pleasant Creek confluence, excluding Cedar Creek, Oak Creek, Pleasant Creek and Cottowood Creek
Cause	Cycle First Listed	TMDL Status	Use	Source
Benthic-Macroinvertebrate Bioassessments	2008	Low Priority	Cold Water Aquatic Life	<ul style="list-style-type: none"> • Source Unknown
Temperature, water	2006	Medium Priority	Cold Water Aquatic Life	<ul style="list-style-type: none"> • Natural Sources
AU ID	AU Name	Water Type	Size	Location Description
UT16030005-022_00	Chicken Creek-2	RIVER	24.51 MILES	Chicken Creek and tributaries from confluence with Sevier River to Levan
Cause	Cycle First Listed	TMDL Status	Use	Source
Total Dissolved Solids	1998	High Priority	Agricultural	<ul style="list-style-type: none"> • Hydromodification • Natural Sources

Impaired Streams and Lakes Requiring a TMDL - Sevier River Watershed

AU ID	AU Name	Water Type	Size	Location Description
UT16030005-025_00	Sevier River-20	RIVER	34.432 MILES	Sevier River from U-132 crossing at the northern most point of the Sevier River (near Dog Valley Wash confluence) upstream to Yuba Dam
Cause	Cycle First Listed	TMDL Status	Use	Source
Benthic-Macroinvertebrate Bioassessments	2010	Low Priority	Warm Water Aquatic Life	• Source Unknown
AU ID	AU Name	Water Type	Size	Location Description
UT16030005-028_00	Sevier River-25	RIVER	18.664 MILES	Sevier River from Crafts Lake to Gunnison Bend Reservoir
Cause	Cycle First Listed	TMDL Status	Use	Source
Boron	2008	Low Priority	Agricultural	• Natural Sources
AU ID	AU Name	Water Type	Size	Location Description
UT16030006-004_00	Parowan Creek	STREAM	1 MILES	Parowan
Cause	Cycle First Listed	TMDL Status	Use	Source
Benthic-Macroinvertebrate Bioassessments	2010	Low Priority	Cold Water Aquatic Life	• Source Unknown

Impaired Streams and Lakes Requiring a TMDL - Sevier River Watershed

AU ID	AU Name	Water Type	Size	Location Description
UT-L-16030001-001_00	Navajo Lake	FRESHWATER LAKE	714 ACRES	LL= 373118/1124536 38S 8,9W 8,7,9,12 USGS MAP AND DATE: CEDAR BREAKS, UTAH-1958, WMU Sevier River
Cause	Cycle First Listed	TMDL Status	Use	Source
Oxygen, Dissolved	2006	Low Priority	Cold Water Aquatic Life	<ul style="list-style-type: none"> • Grazing in Riparian or Shoreline Zones
pH	2010	Low Priority	Cold Water Aquatic Life	<ul style="list-style-type: none"> • Managed Pasture Grazing • Other Recreational Pollution Sources • Rangeland Grazing
AU ID	AU Name	Water Type	Size	Location Description
UT-L-16030001-011_00	Piute Reservoir	FRESHWATER RESERVOIR	2508 ACRES	LL= 381722/1121226 28,29S 2,3N 3,4,9,10,16,17,21,22,27,28,34 USGS MAP AND DATE: MARYSVALE, UTAH 1945 WATERSHED: SEVIER RIVER
Cause	Cycle First Listed	TMDL Status	Use	Source
Temperature, water	2010	Low Priority	Cold Water Aquatic Life	<ul style="list-style-type: none"> • Aquaculture (Permitted) • Managed Pasture Grazing
Phosphorus (Total)	2006	Low Priority	Cold Water Aquatic Life	<ul style="list-style-type: none"> • Other Recreational Pollution Sources

Impaired Streams and Lakes Requiring a TMDL - Sevier River Watershed

AU ID	AU Name	Water Type	Size	Location Description
UT-L-16030002-004_00	Otter Creek Reservoir	FRESHWATER RESERVOIR	2520 ACRES	LL= 381252/1115917 29,30S 2W 10,11,12,14,15,21,22,27,28,35,36 USGS MAP AND DATE: PHONOLITE HILL, UTAH 1971, ANGLE,UTAH 1970 WATERSHED: OTTER CREEK, WMU Sevier River
Cause	Cycle First Listed	TMDL Status	Use	Source
Temperature, water	1994	Low Priority	Cold Water Aquatic Life	• Source Unknown
pH	2006	Low Priority	Cold Water Aquatic Life	
AU ID	AU Name	Water Type	Size	Location Description
UT-L-16030002-011_00	Koosharem Reservoir	FRESHWATER LAKE	310 ACRES	LL= 383505/1115008 25S 1E 19,30,31 USGS MAP AND DATE: BURRVILLE, UTAH-1968 WATERSHED: OTTER CREEK, WMU Sevier River
Cause	Cycle First Listed	TMDL Status	Use	Source
Temperature, water	2010	Low Priority	Cold Water Aquatic Life	• Managed Pasture Grazing
Phosphorus (Total)	1992		Cold Water Aquatic Life	• Other Recreational Pollution Sources • Source Unknown
AU ID	AU Name	Water Type	Size	Location Description

Impaired Streams and Lakes Requiring a TMDL - Sevier River Watershed

UT-L-16030003-006_00	Manning Meadow Reservoir	FRESHWATER LAKE	59 ACRES	TOWNSHIP: 27S RANGE: 2.5W SECTION: 1 USGS MAP AND DATE: MARYSVALE, UTAH-9145 WATERSHED: MANNING CREEK, WMU Sevier River
Cause	Cycle First Listed	TMDL Status	Use	Source
Oxygen, Dissolved	2006	Low Priority	Cold Water Aquatic Life	<ul style="list-style-type: none"> • Managed Pasture Grazing • Rangeland Grazing
Phosphorus (Total)	1994	Low Priority	Cold Water Aquatic Life	
AU ID	AU Name	Water Type	Size	Location Description
UT-L-16030004-001_00	Ninemile Reservoir	FRESHWATER LAKE	197 ACRES	LL= 391030/1114230 19S 2E 8,9 USGS MAP AND DATE: STERLING, UTAH-1966 WATERSHED: HIGHLAND CANAL, WMU Sevier River
Cause	Cycle First Listed	TMDL Status	Use	Source
Oxygen, Dissolved	2006	Low Priority	Cold Water Aquatic Life	<ul style="list-style-type: none"> • Grazing in Riparian or Shoreline Zones
Temperature, water	2008	Low Priority	Cold Water Aquatic Life	<ul style="list-style-type: none"> • Other Recreational Pollution Sources • Rangeland Grazing
pH	2008	Low Priority	Cold Water Aquatic Life	<ul style="list-style-type: none"> • Silviculture Plantation Management
Phosphorus (Total)	2006	Low Priority	Cold Water Aquatic Life	

Impaired Streams and Lakes Requiring a TMDL - Sevier River Watershed

AU ID	AU Name	Water Type	Size	Location Description
UT-L-16030004-005_00	Palisade Lake	FRESHWATER LAKE	66 ACRES	LL= 391200/1114030 18S 2E 34,35 USGS MAP AND DATE: STERLING, UTAH-1966 WATERSHED: LAKE CANAL, WMU
Cause	Cycle First Listed	TMDL Status	Use	Source
Temperature, water	1992	Low Priority	Cold Water Aquatic Life	<ul style="list-style-type: none"> • Source Unknown

Table 8-3 Assessment Results for Sevier River Watershed Stream Assessment Units

Assessment Results for Sevier River Watershed Stream Assessment Units						
AU ID	AU Name		Water Type	Size	Location Description	
UT16030001-001_00	Piute West		RIVER	7.524 MILES	Piute Reservoir west side tributaries (City Creek) above USFS boundary and south of HUC boundary 16030003	
Use	Attainment	Threatened	Cause	Cycle First Listed	TMDL Status	Source
Agricultural	Not Assessed	N				
Cold Water Aquatic Life	Not Assessed	N				
Secondary Recreation	Not Assessed	N				
AU ID	AU Name		Water Type	Size	Location Description	
UT16030001-002_00	Sevier River-4		RIVER	16.208 MILES	Sevier River and tributaries from Piute Reservoir to Circleville Irrigation Diversion, excluding East Fork Sevier River and tributaries	

Assessment Results for Sevier River Watershed Stream Assessment Units

Use	Attainment	Threatened	Cause	Cycle First Listed	TMDL Status	Source
Agricultural	Fully Supporting	N	Temperature, water	2008	Low Priority	<ul style="list-style-type: none"> • Source Unknown
Cold Water Aquatic Life	Not Supporting	N				
Secondary Recreation	Not Assessed	N				
AU ID	AU Name		Water Type	Size	Location Description	
UT16030001-004_00	Bear Creek		RIVER	5.582 MILES	Bear Creek and tributaries from confluence with Sevier River to headwaters	
Use	Attainment	Threatened	Cause	Cycle First Listed	TMDL Status	Source
Agricultural	Fully Supporting	N				
Cold Water Aquatic Life	Fully Supporting	N				

Assessment Results for Sevier River Watershed Stream Assessment Units

Secondary Recreation	Not Assessed	N				
AU ID	AU Name		Water Type	Size	Location Description	
UT16030001-005_00	Sevier River-3		RIVER	20.66 MILES	Sevier River and tributaries from Circleville Irrigation Diversion to Horse Valley Diversion	
Use	Attainment	Threatened	Cause	Cycle First Listed	TMDL Status	Source
Agricultural	Fully Supporting	N	Phosphorus (Total) Physical substrate habitat alterations Sedimentation/Siltation Temperature, water	2006 2006 2008	Completed Pollution Completed Low Priority	<ul style="list-style-type: none"> • Aquaculture (Permitted) • Agriculture
Cold Water Aquatic Life	Not Supporting	N				<ul style="list-style-type: none"> • Habitat Modification - other than Hydromodification • Hydromodification
Secondary Recreation	Not Assessed	N				<ul style="list-style-type: none"> • Source Unknown
AU ID	AU Name		Water Type	Size	Location Description	

Assessment Results for Sevier River Watershed Stream Assessment Units

UT16030001-006_00	Panguitch Creek-2		RIVER	23.255 MILES	Panguitch Creek and tributaries from confluence with Sevier River to Panguitch Reservoir	
Use	Attainment	Threatened	Cause	Cycle First Listed	TMDL Status	Source
Agricultural	Not Assessed	N				
Cold Water Aquatic Life	Not Assessed	N				
Secondary Recreation	Not Assessed	N				
AU ID	AU Name		Water Type	Size	Location Description	
UT16030001-007_00	Sevier River-2		RIVER	46.99 MILES	Sevier River and east side tributaries from Horse Valley Bridge Diversion upstream to Long Canal	
Use	Attainment	Threatened	Cause	Cycle First Listed	TMDL Status	Source
Agricultural	Fully Supporting	N				<ul style="list-style-type: none"> • Aquaculture (Permitted)

Assessment Results for Sevier River Watershed Stream Assessment Units

Cold Water Aquatic Life	Not Supporting	N	Phosphorus (Total) Physical substrate habitat alterations Sedimentation/Siltation	2006	Completed Pollution Completed	<ul style="list-style-type: none"> • Agriculture • Habitat Modification - other than Hydromodification • Hydromodification
Secondary Recreation	Not Assessed	N		2006		
AU ID	AU Name		Water Type	Size	Location Description	
UT16030001-008_00	Panguitch Creek-1		RIVER	30.012 MILES	Panguitch Creek and tributaries and all other tributaries to Panguitch Reservoir to headwaters	
Use	Attainment	Threatened	Cause	Cycle First Listed	TMDL Status	Source
Agricultural	Not Assessed	N				
Cold Water Aquatic Life	Not Assessed	N				
Secondary Recreation	Not Assessed	N				

Assessment Results for Sevier River Watershed Stream Assessment Units

AU ID	AU Name		Water Type	Size	Location Description	
UT16030001-009_00	Mammoth Creek Lower		RIVER	22.2 MILES	Mammoth Creek and tributaries from confluence with Sevier River to Mammoth Spring confluence	
Use	Attainment	Threatened	Cause	Cycle First Listed	TMDL Status	Source
Agricultural	Fully Supporting	N	Phosphorus (Total)	2008	Completed	
Cold Water Aquatic Life	Not Supporting	N				
Secondary Recreation	Not Assessed	N				
AU ID	AU Name		Water Type	Size	Location Description	
UT16030001-010_00	Duck Creek		RIVER	2.84 MILES	Duck Creek and tributaries from mouth to headwaters	
Use	Attainment	Threatened	Cause	Cycle First Listed	TMDL Status	Source

Assessment Results for Sevier River Watershed Stream Assessment Units

Agricultural	Not Assessed	N				
Cold Water Aquatic Life	Not Assessed	N				
Domestic Water Supply	Not Assessed	N				
Secondary Recreation	Not Assessed	N				
AU ID	AU Name		Water Type	Size	Location Description	
UT16030001-011_00	Asay Creek		RIVER	36.822 MILES	Asay Creek and tributaries from confluence with Sevier River to Headwaters	
Use	Attainment	Threatened	Cause	Cycle First Listed	TMDL Status	Source
Agricultural	Fully Supporting	N				
Cold Water Aquatic Life	Fully Supporting	N				

Assessment Results for Sevier River Watershed Stream Assessment Units

Secondary Recreation	Not Assessed	N				
AU ID	AU Name		Water Type	Size	Location Description	
UT16030001-012_00	Sevier River-1		RIVER	28.607 MILES	Sevier River and tributaries from Long Canal to Mammoth Creek confluence	
Use	Attainment	Threatened	Cause	Cycle First Listed	TMDL Status	Source
Agricultural	Fully Supporting	N	Phosphorus (Total) Sedimentation/Siltation Temperature, water	2006 2006 2008	Completed Completed Low Priority	<ul style="list-style-type: none"> • Aquaculture (Permitted) • Agriculture • Habitat Modification - other than Hydromodification • Hydromodification • Source Unknown
Cold Water Aquatic Life	Not Supporting	N				
Secondary Recreation	Not Assessed	N				
AU ID	AU Name		Water Type	Size	Location Description	

Assessment Results for Sevier River Watershed Stream Assessment Units

UT16030001-013_00	Piute		RIVER	4.036 MILES	Piute Reservoir tributaries below USFS boundary and excluding Sevier River inlet	
Use	Attainment	Threatened	Cause	Cycle First Listed	TMDL Status	Source
Agricultural	Not Assessed	N	Benthic-Macroinvertebrate Bioassessments	2008	Low Priority	<ul style="list-style-type: none"> • Source Unknown
Cold Water Aquatic Life	Not Supporting	N				
Secondary Recreation	Not Assessed	N				
AU ID	AU Name		Water Type	Size	Location Description	
UT16030001-014_00	Threemile Creek		RIVER	19.91 MILES	Threemile Creek and other Sevier River west side tributaries from Horse Valley Diversion upstream to Long Canal, excluding Panquitch and Bear Creeks	
Use	Attainment	Threatened	Cause	Cycle First Listed	TMDL Status	Source

Assessment Results for Sevier River Watershed Stream Assessment Units

Agricultural	Fully Supporting	N				• Source Unknown
Cold Water Aquatic Life	Not Supporting	N	Temperature, water	2008	Low Priority	
Secondary Recreation	Not Assessed	N				
AU ID	AU Name		Water Type	Size	Location Description	
UT16030001-015_00	Mammoth Creek Upper		RIVER	21.894 MILES	Mammoth Creek and tributaries from confluence with Mammoth Spring to headwaters	
Use	Attainment	Threatened	Cause	Cycle First Listed	TMDL Status	Source
Agricultural	Fully Supporting	N				
Cold Water Aquatic Life	Fully Supporting	N				
Secondary Recreation	Not Assessed	N				

Assessment Results for Sevier River Watershed Stream Assessment Units

AU ID	AU Name		Water Type	Size	Location Description	
UT16030002-001_00	Otter Creek-4		RIVER	18.583 MILES	Otter Creek and tributaries from Koosharem Reservoir to headwaters	
Use	Attainment	Threatened	Cause	Cycle First Listed	TMDL Status	Source
Agricultural	Fully Supporting	N	Phosphorus (Total) Physical substrate habitat alterations Sedimentation/Siltation Temperature, water	2006 2006 2008	Completed Pollution Completed Low Priority	<ul style="list-style-type: none"> • Agriculture • Habitat Modification - other than Hydromodification • Source Unknown
Cold Water Aquatic Life	Not Supporting	N				
Secondary Recreation	Not Assessed	N				
AU ID	AU Name		Water Type	Size	Location Description	
UT16030002-002_00	Otter Creek-1		RIVER	59.82 MILES	Otter Creek and tributaries from Otter Creek Reservoir to Koosharem Reservoir, except Box and Greenwich Creeks	

Assessment Results for Sevier River Watershed Stream Assessment Units

Use	Attainment	Threatened	Cause	Cycle First Listed	TMDL Status	Source
Agricultural	Fully Supporting	N	Phosphorus (Total) Physical substrate habitat alterations Sedimentation/Siltation Temperature, water	2006 2006 2008	Completed Pollution Completed Low Priority	<ul style="list-style-type: none"> • Grazing in Riparian or Shoreline Zones • Irrigated Crop Production • Agriculture • Habitat Modification - other than Hydromodification • Hydromodification • Source Unknown
Cold Water Aquatic Life	Not Supporting	N				
Secondary Recreation	Not Assessed	N				
AU ID	AU Name		Water Type	Size	Location Description	
UT16030002-003_00	Otter Creek-3		RIVER	23.765 MILES	Greenwich Creek and tributaries from confluence with Otter Creek to headwaters	
Use	Attainment	Threatened	Cause	Cycle First Listed	TMDL Status	Source
Agricultural	Fully Supporting	N				<ul style="list-style-type: none"> • Grazing in Riparian or

Assessment Results for Sevier River Watershed Stream Assessment Units

Cold Water Aquatic Life	Not Supporting	N	Phosphorus (Total) Physical substrate habitat alterations Sedimentation/Siltation	2006	Completed Pollution Completed	Shoreline Zones <ul style="list-style-type: none"> • Irrigated Crop Production • Agriculture • Habitat Modification - other than Hydromodification • Hydromodification
Secondary Recreation	Not Assessed	N		2006		
AU ID	AU Name		Water Type	Size	Location Description	
UT16030002-004_00	Otter Creek-2		RIVER	19.49 MILES	Box Creek and tributaries from confluence with Otter Creek to headwaters	
Use	Attainment	Threatened	Cause	Cycle First Listed	TMDL Status	Source
Agricultural	Fully Supporting	N	Phosphorus (Total) Physical substrate habitat alterations Sedimentation/Siltation	2006	Completed Pollution Completed	<ul style="list-style-type: none"> • Agriculture • Habitat Modification - other than Hydromodification • Hydromodification
Cold Water Aquatic Life	Not Supporting	N		2006		

Assessment Results for Sevier River Watershed Stream Assessment Units						
Secondary Recreation	Not Assessed	N				
AU ID	AU Name		Water Type	Size	Location Description	
UT16030002-005_00	East Fork Sevier River-4		RIVER	25.741 MILES	East Fork Sevier River and tributaries from confluence with Sevier River upstream to Antimony Creek confluence, excluding Otter Creek and tributaries	
Use	Attainment	Threatened	Cause	Cycle First Listed	TMDL Status	Source
Agricultural	Fully Supporting	N	Phosphorus (Total) Temperature, water	2006 2006	Completed Low Priority	<ul style="list-style-type: none"> • Agriculture • Source Unknown
Cold Water Aquatic Life	Not Supporting	N				
Secondary Recreation	Not Assessed	N				
AU ID	AU Name		Water Type	Size	Location Description	

Assessment Results for Sevier River Watershed Stream Assessment Units

UT16030002-006_00	East Fork Sevier-3		RIVER	21.292 MILES	East Fork Sevier River and tributaries from Antimony Creek confluence to Deer Creek confluence	
Use	Attainment	Threatened	Cause	Cycle First Listed	TMDL Status	Source
Agricultural	Fully Supporting	N	Benthic-Macroinvertebrate Bioassessments	2010	Low Priority	<ul style="list-style-type: none"> • Source Unknown
Cold Water Aquatic Life	Not Supporting	N				
Secondary Recreation	Not Assessed	N				
AU ID	AU Name		Water Type	Size	Location Description	
UT16030002-007_00	Deer Creek		RIVER	17.604 MILES	Deer Creek and tributaries from confluence with East Fork Sevier River to headwaters	
Use	Attainment	Threatened	Cause	Cycle First Listed	TMDL Status	Source

Assessment Results for Sevier River Watershed Stream Assessment Units						
Agricultural	Not Assessed	N				
Cold Water Aquatic Life	Not Assessed	N				
Secondary Recreation	Not Assessed	N				
AU ID	AU Name		Water Type	Size	Location Description	
UT16030002-008_00	Antimony Creek		RIVER	26.591 MILES	Antimony Creek and tributaries from confluence with Sevier River to headwaters	
Use	Attainment	Threatened	Cause	Cycle First Listed	TMDL Status	Source
Agricultural	Not Assessed	N				
Cold Water Aquatic Life	Not Assessed	N				
Secondary Recreation	Not Assessed	N				

Assessment Results for Sevier River Watershed Stream Assessment Units

AU ID	AU Name		Water Type	Size	Location Description	
UT16030002-009_00	East Fork Sevier-2		RIVER	127.668 MILES	East Fork Sevier River and tributaries from Deer Creek confluence to Tropic Reservoir	
Use	Attainment	Threatened	Cause	Cycle First Listed	TMDL Status	Source
Agricultural	Fully Supporting	N				
Cold Water Aquatic Life	Fully Supporting	N				
Secondary Recreation	Not Assessed	N				
AU ID	AU Name		Water Type	Size	Location Description	
UT16030002-010_00	East Fork Sevier-1		RIVER	31.8 MILES	East Fork Sevier River and tributaries from Tropic Reservoir to headwaters	
Use	Attainment	Threatened	Cause	Cycle First Listed	TMDL Status	Source

Assessment Results for Sevier River Watershed Stream Assessment Units						
Agricultural	Fully Supporting	N				
Cold Water Aquatic Life	Fully Supporting	N				
Secondary Recreation	Insufficient Information	N				
AU ID	AU Name		Water Type	Size	Location Description	
UT16030003-001_00	Sevier River-19		RIVER	1.131 MILES	Sevier River west side tributaries from Sevier Bridge Dam to Salina Creek confluence	
Use	Attainment	Threatened	Cause	Cycle First Listed	TMDL Status	Source
Agricultural	Not Assessed	N				
Secondary Recreation	Not Assessed	N				
Warm Water Aquatic Life	Not Assessed	N				

Assessment Results for Sevier River Watershed Stream Assessment Units

AU ID	AU Name		Water Type	Size	Location Description	
UT16030003-002_00	Willow Creek		RIVER	14.07 MILES	Willow Creek and tributaries from USFS boundary to headwaters	
Use	Attainment	Threatened	Cause	Cycle First Listed	TMDL Status	Source
Agricultural	Not Assessed	N				
Cold Water Aquatic Life	Not Assessed	N				
Secondary Recreation	Not Assessed	N				
AU ID	AU Name		Water Type	Size	Location Description	
UT16030003-003_00	Salina Creek-1		RIVER	4.71 MILES	Salina Creek and tributaries from confluence with Sevier River to USFS boundary	
Use	Attainment	Threatened	Cause	Cycle First Listed	TMDL Status	Source

Assessment Results for Sevier River Watershed Stream Assessment Units

Agricultural	Not Supporting	N	Total Dissolved Solids	1998	Completed	<ul style="list-style-type: none"> • Natural Sources • Agriculture • Hydromodification
Secondary Recreation	Not Assessed	N				
Warm Water Aquatic Life	Fully Supporting	N				
AU ID	AU Name		Water Type	Size	Location Description	
UT16030003-004_00	Sevier River-16		RIVER	0.715 MILES	Sevier River east and west side tributaries from Salina Creek confluence to Rocky Ford Reservoir (excludes Lost Creek)	
Use	Attainment	Threatened	Cause	Cycle First Listed	TMDL Status	Source
Agricultural	Not Assessed	N				
Cold Water Aquatic Life	Not Assessed	N				
Secondary Recreation	Not Assessed	N				

Assessment Results for Sevier River Watershed Stream Assessment Units

AU ID	AU Name		Water Type	Size	Location Description	
UT16030003-005_00	Lost Creek-1		RIVER	4.108 MILES	Lost Creek and tributaries from confluence with Sevier River upstream approximately 6 miles	
Use	Attainment	Threatened	Cause	Cycle First Listed	TMDL Status	Source
Agricultural	Fully Supporting	N				
Secondary Recreation	Not Assessed	N				
Warm Water Aquatic Life	Fully Supporting	N				
AU ID	AU Name		Water Type	Size	Location Description	
UT16030003-006_00	Salina Creek-2		RIVER	133.939 MILES	Salina Creek and tributaries from USFS boundary to headwaters	
Use	Attainment	Threatened	Cause	Cycle First Listed	TMDL Status	Source

Assessment Results for Sevier River Watershed Stream Assessment Units

Agricultural	Fully Supporting	N				
Cold Water Aquatic Life	Fully Supporting	N				
Secondary Recreation	Not Assessed	N				
AU ID	AU Name		Water Type	Size	Location Description	
UT16030003-007_00	Beaver Creek-1		RIVER	7.037 MILES	Beaver Creek and other west side tributaries to Sevier River below USFS boundary from Clear Creek upstream to HUC boundary	
Use	Attainment	Threatened	Cause	Cycle First Listed	TMDL Status	Source
Agricultural	Fully Supporting	N				
Cold Water Aquatic Life	Fully Supporting	N				
Secondary Recreation	Not Assessed	N				

Assessment Results for Sevier River Watershed Stream Assessment Units

AU ID	AU Name		Water Type	Size	Location Description	
UT16030003-008_00	Lost Creek-2		RIVER	7.456 MILES	Lost Creek and tributaries from ~6 miles upstream to USFS boundary	
Use	Attainment	Threatened	Cause	Cycle First Listed	TMDL Status	Source
Agricultural	Fully Supporting	N				
Secondary Recreation	Not Assessed	N				
Warm Water Aquatic Life	Fully Supporting	N				
AU ID	AU Name		Water Type	Size	Location Description	
UT16030003-009_00	Sevier River-11		RIVER	0.003 MILES	Sevier River west side tributaries from the Annabella Diversion upstream to Sevier River confluence with Clear Creek and below USFS boundary	

Assessment Results for Sevier River Watershed Stream Assessment Units

Use	Attainment	Threatened	Cause	Cycle First Listed	TMDL Status	Source
Agricultural	Not Assessed	N				
Cold Water Aquatic Life	Not Assessed	N				
Secondary Recreation	Not Assessed	N				
AU ID	AU Name		Water Type	Size	Location Description	
UT16030003-010_00	Lost Creek-3		RIVER	26.681 MILES	Lost Creek and tributaries from USFS boundary to headwaters	
Use	Attainment	Threatened	Cause	Cycle First Listed	TMDL Status	Source
Agricultural	Fully Supporting	N				
Cold Water Aquatic Life	Fully Supporting	N				

Assessment Results for Sevier River Watershed Stream Assessment Units

Secondary Recreation	Not Assessed	N				
AU ID	AU Name		Water Type	Size	Location Description	
UT16030003-011_00	Sevier River-11		RIVER	12.941 MILES	Sevier River west side tributaries from approximately due West of Salina Creek confluence upstream to Clear Creek confluence and above USFS boundary	
Use	Attainment	Threatened	Cause	Cycle First Listed	TMDL Status	Source
Agricultural	Not Assessed	N				
Secondary Recreation	Not Assessed	N				
Warm Water Aquatic Life	Not Assessed	N				
AU ID	AU Name		Water Type	Size	Location Description	

Assessment Results for Sevier River Watershed Stream Assessment Units

UT16030003-012_00	Sevier River-17		RIVER	45.244 MILES	Sevier River from Yuba Dam upstream to confluence with Salina Creek	
Use	Attainment	Threatened	Cause	Cycle First Listed	TMDL Status	Source
Agricultural	Not Supporting	N	Total Dissolved Solids	2000	Completed	<ul style="list-style-type: none"> • Natural Sources • Agriculture • Hydromodification
Secondary Recreation	Not Assessed	N				
Warm Water Aquatic Life	Not Supporting	N	Phosphorus (Total) Physical substrate habitat alterations Sedimentation/Siltation	2006 2006	Completed Pollution Completed	
AU ID	AU Name		Water Type	Size	Location Description	
UT16030003-013_00	Monroe Creek		RIVER	57.545 MILES	Sevier River east side tributaries above USFS boundary from Mill Creek-Water Creek area upstream to Durkee Creek	
Use	Attainment	Threatened	Cause	Cycle First Listed	TMDL Status	Source

Assessment Results for Sevier River Watershed Stream Assessment Units

Agricultural	Not Assessed	N				
Cold Water Aquatic Life	Not Assessed	N				
Secondary Recreation	Not Assessed	N				
AU ID	AU Name		Water Type	Size	Location Description	
UT16030003-014_00	Sevier River-14		RIVER	9.456 MILES	Sevier River east side tributaries from Rocky Ford Reservoir upstream to Annabella Diversion and below USFS boundary	
Use	Attainment	Threatened	Cause	Cycle First Listed	TMDL Status	Source
Agricultural	Fully Supporting	N				
Cold Water Aquatic Life	Not Assessed	N				
Secondary Recreation	Not Assessed	N				

Assessment Results for Sevier River Watershed Stream Assessment Units

Warm Water Aquatic Life	Fully Supporting	N				
AU ID	AU Name		Water Type	Size	Location Description	
UT16030003-015_00	Sevier River-13		RIVER	28.377 MILES	Sevier River from Rocky Ford Reservoir upstream to Annabella Diversion	
Use	Attainment	Threatened	Cause	Cycle First Listed	TMDL Status	Source
Agricultural	Fully Supporting	N				
Cold Water Aquatic Life	Fully Supporting	N				
Secondary Recreation	Not Assessed	N				
AU ID	AU Name		Water Type	Size	Location Description	
UT16030003-016_00	Sevier River-10		RIVER	0.432 MILES	Sevier River east side tributaries below USFS boundary from Anabella Diversion upstream to	

Assessment Results for Sevier River Watershed Stream Assessment Units

Assessment Results for Sevier River Watershed Stream Assessment Units						
					Clear Creek confluence	
Use	Attainment	Threatened	Cause	Cycle First Listed	TMDL Status	Source
Agricultural	Not Assessed	N				
Cold Water Aquatic Life	Not Assessed	N				
Secondary Recreation	Not Assessed	N				
AU ID	AU Name		Water Type	Size	Location Description	
UT16030003-017_00	Sevier River-6		RIVER	28.062 MILES	Sevier River from Clear Creek confluence to HUC unit 1603003-1603001 boundary	
Use	Attainment	Threatened	Cause	Cycle First Listed	TMDL Status	Source
Agricultural	Fully Supporting	N				<ul style="list-style-type: none"> • Source Unknown

Assessment Results for Sevier River Watershed Stream Assessment Units

Cold Water Aquatic Life	Not Supporting	N	Temperature, water	2006	Low Priority	
Secondary Recreation	Not Assessed	N				
AU ID	AU Name		Water Type	Size	Location Description	
UT16030003-018_00	Clear Creek		RIVER	101.376 MILES	Clear Creek and tributaries from confluence with Sevier River to headwaters	
Use	Attainment	Threatened	Cause	Cycle First Listed	TMDL Status	Source
Agricultural	Fully Supporting	N				
Cold Water Aquatic Life	Fully Supporting	N				
Secondary Recreation	Not Assessed	N				
AU ID	AU Name		Water Type	Size	Location Description	

Assessment Results for Sevier River Watershed Stream Assessment Units

Assessment Results for Sevier River Watershed Stream Assessment Units						
UT16030003-019_00	Sevier River-9		RIVER	11.531 MILES	Sevier River from Annabella Diversion to Clear Creek confluence	
Use	Attainment	Threatened	Cause	Cycle First Listed	TMDL Status	Source
Agricultural	Not Assessed	N				
Cold Water Aquatic Life	Not Assessed	N				
Secondary Recreation	Not Assessed	N				
AU ID	AU Name		Water Type	Size	Location Description	
UT16030003-020_00	Beaver Creek-2		RIVER	16.722 MILES	Beaver Creek and other west side tributaries to Sevier River above USFS boundary from Clear Creek upstream to HUC boundary	
Use	Attainment	Threatened	Cause	Cycle First Listed	TMDL Status	Source

Assessment Results for Sevier River Watershed Stream Assessment Units						
Agricultural	Fully Supporting	N				
Cold Water Aquatic Life	Fully Supporting	N				
Secondary Recreation	Not Assessed	N				
AU ID	AU Name		Water Type	Size	Location Description	
UT16030003-021_00	Manning Creek		RIVER	13.926 MILES	Manning Creek and tributaries from confluence with Sevier River to headwaters	
Use	Attainment	Threatened	Cause	Cycle First Listed	TMDL Status	Source
Agricultural	Not Assessed	N				
Cold Water Aquatic Life	Not Assessed	N				
Secondary Recreation	Not Assessed	N				

Assessment Results for Sevier River Watershed Stream Assessment Units

AU ID	AU Name		Water Type	Size	Location Description	
UT16030003-022_00	Sevier River-5		RIVER	12.509 MILES	Sevier River east side tributaries from Manning Creek confluence to HUC unit boundary	
Use	Attainment	Threatened	Cause	Cycle First Listed	TMDL Status	Source
Agricultural	Not Assessed	N				
Cold Water Aquatic Life	Not Assessed	N				
Secondary Recreation	Not Assessed	N				
AU ID	AU Name		Water Type	Size	Location Description	
UT16030003-023_00	Sevier River-18		RIVER	26.857 MILES	Sevier River east side tributaries from Sevier Bridge Dam to Salina Creek confluence, excluding San Pitch River and waters above USFS boundary	

Assessment Results for Sevier River Watershed Stream Assessment Units

Use	Attainment	Threatened	Cause	Cycle First Listed	TMDL Status	Source
Agricultural	Not Assessed	N				
Cold Water Aquatic Life	Not Assessed	N				
Secondary Recreation	Not Assessed	N				
AU ID	AU Name		Water Type	Size	Location Description	
UT16030003-024_00	Sevier River-15		RIVER	13.202 MILES	Sevier River form confluence with Salina Creek upstream to Rocky Ford Reservoir	
Use	Attainment	Threatened	Cause	Cycle First Listed	TMDL Status	Source
Agricultural	Not Assessed	N				
Secondary Recreation	Not Assessed	N				

Assessment Results for Sevier River Watershed Stream Assessment Units

Warm Water Aquatic Life	Not Assessed	N				
AU ID	AU Name		Water Type	Size	Location Description	
UT16030003-025_00	Sevier River-13		RIVER	4.376 MILES	Sevier River west side tributaries from Rocky Ford Reservoir upstream to Annabella Diversion and below USFS boundary	
Use	Attainment	Threatened	Cause	Cycle First Listed	TMDL Status	Source
Agricultural	Not Assessed	N				
Secondary Recreation	Not Assessed	N				
Warm Water Aquatic Life	Not Assessed	N				
AU ID	AU Name		Water Type	Size	Location Description	

Assessment Results for Sevier River Watershed Stream Assessment Units

UT16030003-026_00	Sevier River-7		RIVER	0 MILES	Sevier River east side tributaries from the Clear Creek confluence upstream to Manning Creek confluence	
Use	Attainment	Threatened	Cause	Cycle First Listed	TMDL Status	Source
Agricultural	Not Assessed	N				
Cold Water Aquatic Life	Not Assessed	N				
Secondary Recreation	Not Assessed	N				
AU ID	AU Name		Water Type	Size	Location Description	
UT16030003-027_00	Peterson Creek		RIVER	8.702 MILES	Peterson Creek and tributaries from confluence with Sevier River to USFS boundary	
Use	Attainment	Threatened	Cause	Cycle First Listed	TMDL Status	Source

Assessment Results for Sevier River Watershed Stream Assessment Units

Agricultural	Not Assessed	N				
Secondary Recreation	Not Assessed	N				
Warm Water Aquatic Life	Not Assessed	N				
AU ID	AU Name		Water Type	Size	Location Description	
UT16030004-001_00	San Pitch-1		RIVER	16.737 MILES	San Pitch River and tributaries from confluence with Sevier River to tailwaters of Gunnison Reservoir (excluding all of Sixmile Creek and Twelvemile Creek above USFS boundary)	
Use	Attainment	Threatened	Cause	Cycle First Listed	TMDL Status	Source
Agricultural	Fully Supporting	N				
Non-Game Fish and Other Aquatic Life	Fully Supporting	N				

Assessment Results for Sevier River Watershed Stream Assessment Units						
Secondary Recreation	Not Assessed	N				
Wildlife Habitat	Fully Supporting	N				
AU ID	AU Name		Water Type	Size	Location Description	
UT16030004-002_00	Twelve Mile Creek		RIVER	43.846 MILES	Twelvemile Creek and tributaries from USFS boundary to headwaters	
Use	Attainment	Threatened	Cause	Cycle First Listed	TMDL Status	Source
Agricultural	Fully Supporting	N				
Cold Water Aquatic Life	Fully Supporting	N				
Secondary Recreation	Not Assessed	N				
AU ID	AU Name		Water Type	Size	Location Description	

Assessment Results for Sevier River Watershed Stream Assessment Units

UT16030004-003_00	Six Mile Creek		RIVER	27.412 MILES	Sixmile Creek and tributaries from confluence with San Pitch River to headwaters	
Use	Attainment	Threatened	Cause	Cycle First Listed	TMDL Status	Source
Agricultural	Fully Supporting	N				
Cold Water Aquatic Life	Fully Supporting	N				
Secondary Recreation	Not Assessed	N				
AU ID	AU Name		Water Type	Size	Location Description	
UT16030004-004_00	South Creek		RIVER	21.208 MILES	South Creek (Manti Creek) and tributaries from USFS boundary to headwaters	
Use	Attainment	Threatened	Cause	Cycle First Listed	TMDL Status	Source
Agricultural	Fully Supporting	N				

Assessment Results for Sevier River Watershed Stream Assessment Units

Cold Water Aquatic Life	Fully Supporting	N				
Secondary Recreation	Not Assessed	N				
AU ID	AU Name		Water Type	Size	Location Description	
UT16030004-005_00	San Pitch-3		RIVER	55.79 MILES	San Pitch River and tributaries from Gunnison Reservoir to U132 crossing below USFS boundary	
Use	Attainment	Threatened	Cause	Cycle First Listed	TMDL Status	Source
Agricultural	Not Supporting	N	Total Dissolved Solids	1998	Completed	<ul style="list-style-type: none"> • Natural Sources • Agriculture • Hydromodification
Non-Game Fish and Other Aquatic Life	Fully Supporting	N				
Secondary Recreation	Not Assessed	N				
Wildlife Habitat	Fully Supporting	N				

Assessment Results for Sevier River Watershed Stream Assessment Units

AU ID	AU Name		Water Type	Size	Location Description	
UT16030004-007_00	Ephraim Creek		RIVER	16.227 MILES	Ephraim Creek and tributaries from USFS boundary to headwaters	
Use	Attainment	Threatened	Cause	Cycle First Listed	TMDL Status	Source
Agricultural	Fully Supporting	N				
Cold Water Aquatic Life	Fully Supporting	N				
Secondary Recreation	Not Assessed	N				
AU ID	AU Name		Water Type	Size	Location Description	
UT16030004-008_00	Pleasant Creek		RIVER	50.385 MILES	Pleasant Creek and tributaries from confluence with San Pitch River to headwaters	
Use	Attainment	Threatened	Cause	Cycle First Listed	TMDL Status	Source

Assessment Results for Sevier River Watershed Stream Assessment Units

Agricultural	Fully Supporting	N				
Cold Water Aquatic Life	Fully Supporting	N				
Secondary Recreation	Not Assessed	N				
AU ID	AU Name		Water Type	Size	Location Description	
UT16030004-009_00	San Pitch-5		RIVER	65.657 MILES	San Pitch River and tributaries from U-132 to Pleasant Creek confluence, excluding Cedar Creek, Oak Creek, Pleasant Creek and Cottowood Creek	
Use	Attainment	Threatened	Cause	Cycle First Listed	TMDL Status	Source
Agricultural	Fully Supporting	N				<ul style="list-style-type: none"> • Source Unknown • Natural Sources
Cold Water Aquatic Life	Not Supporting	N	Benthic-Macroinvertebrate Bioassessments Temperature, water	2008 2006	Low Priority Medium Priority	

Assessment Results for Sevier River Watershed Stream Assessment Units

Secondary Recreation	Not Assessed	N				
AU ID	AU Name		Water Type	Size	Location Description	
UT16030004-010_00	Oak Creek-1		RIVER	34.908 MILES	Oak Creek and Canal Creek and tributaries from USFS boundary to headwaters	
Use	Attainment	Threatened	Cause	Cycle First Listed	TMDL Status	Source
Agricultural	Fully Supporting	N				
Cold Water Aquatic Life	Fully Supporting	N				
Secondary Recreation	Not Assessed	N				
AU ID	AU Name		Water Type	Size	Location Description	
UT16030004-011_00	San Pitch-4		RIVER	10.838 MILES	Silver Creek and tributaries from confluence with San Pitch to headwaters	

Assessment Results for Sevier River Watershed Stream Assessment Units

Use	Attainment	Threatened	Cause	Cycle First Listed	TMDL Status	Source
Agricultural	Not Supporting	N	Total Dissolved Solids	2006	Completed	<ul style="list-style-type: none"> • Natural Sources • Agriculture
Non-Game Fish and Other Aquatic Life	Fully Supporting	N				
Secondary Recreation	Not Assessed	N				
Wildlife Habitat	Fully Supporting	N				
AU ID	AU Name		Water Type	Size	Location Description	
UT16030004-012_00	Upper Oak Creek		RIVER	6.832 MILES	Oak Creek and tributaries from confluence with San Pitch River to headwaters (near Fairview)	
Use	Attainment	Threatened	Cause	Cycle First Listed	TMDL Status	Source
Agricultural	Fully Supporting	N				

Assessment Results for Sevier River Watershed Stream Assessment Units

Cold Water Aquatic Life	Fully Supporting	N				
Secondary Recreation	Not Assessed	N				
AU ID	AU Name		Water Type	Size	Location Description	
UT16030004-013_00	Cottonwood Creek-SP		RIVER	9.351 MILES	Cottonwood Creek and tributaries from confluence with San Pitch River to headwaters	
Use	Attainment	Threatened	Cause	Cycle First Listed	TMDL Status	Source
Agricultural	Fully Supporting	N				
Cold Water Aquatic Life	Fully Supporting	N				
Secondary Recreation	Not Assessed	N				
AU ID	AU Name		Water Type	Size	Location Description	

Assessment Results for Sevier River Watershed Stream Assessment Units

UT16030005-001_00	Judd Creek		RIVER	0.01 MILES	Judd Creek and tributaries from mouth to headwaters	
Use	Attainment	Threatened	Cause	Cycle First Listed	TMDL Status	Source
Agricultural	Not Assessed	N				
Cold Water Aquatic Life	Not Assessed	N				
Secondary Recreation	Not Assessed	N				
AU ID	AU Name		Water Type	Size	Location Description	
UT16030005-002_00	Cherry Creek		RIVER	0.01 MILES	Cherry Creek and tributaries from mouth to headwaters	
Use	Attainment	Threatened	Cause	Cycle First Listed	TMDL Status	Source
Agricultural	Not Assessed	N				

Assessment Results for Sevier River Watershed Stream Assessment Units

Cold Water Aquatic Life	Not Assessed	N				
Secondary Recreation	Not Assessed	N				
AU ID	AU Name		Water Type	Size	Location Description	
UT16030005-003_00	Tanner Creek		RIVER	0.01 MILES	Tanner Creek and tributaries from mouth to headwaters	
Use	Attainment	Threatened	Cause	Cycle First Listed	TMDL Status	Source
Agricultural	Not Assessed	N				
Cold Water Aquatic Life	Not Assessed	N				
Secondary Recreation	Not Assessed	N				
AU ID	AU Name		Water Type	Size	Location Description	

Assessment Results for Sevier River Watershed Stream Assessment Units

UT16030005-004_00	Oak Creek-O1		RIVER	0.01 MILES	Oak Creek tributaries from mouth to USFS boundary (near Oak City)	
Use	Attainment	Threatened	Cause	Cycle First Listed	TMDL Status	Source
Agricultural	Not Assessed	N				
Secondary Recreation	Not Assessed	N				
Warm Water Aquatic Life	Not Assessed	N				
AU ID	AU Name		Water Type	Size	Location Description	
UT16030005-005_00	Fool Creek-1		RIVER	0.01 MILES	Fool Creek and tributaries from mouth to USFS boundary	
Use	Attainment	Threatened	Cause	Cycle First Listed	TMDL Status	Source
Agricultural	Not Assessed	N				

Assessment Results for Sevier River Watershed Stream Assessment Units

Secondary Recreation	Not Assessed	N				
Warm Water Aquatic Life	Not Assessed	N				
AU ID	AU Name		Water Type	Size	Location Description	
UT16030005-006_00	Fish Lake-Sevier		RIVER	8.212 MILES	Fishlake National Forest perennial streams located west of Interstate 15	
Use	Attainment	Threatened	Cause	Cycle First Listed	TMDL Status	Source
Agricultural	Not Assessed	N				
Cold Water Aquatic Life	Not Assessed	N				
Secondary Recreation	Not Assessed	N				
AU ID	AU Name		Water Type	Size	Location Description	

Assessment Results for Sevier River Watershed Stream Assessment Units

UT16030005-007_00	Sevier River-21		RIVER	9.452 MILES	Sevier River north side tributaries from DMAD Reservoir upstream to Sevier Bridge Reservoir (Yuba Dam) excluding Tanner Creek, Chicken Creek, their tributaries, and waters above USFS boundary	
Use	Attainment	Threatened	Cause	Cycle First Listed	TMDL Status	Source
Agricultural	Not Assessed	N				
Cold Water Aquatic Life	Not Assessed	N				
Secondary Recreation	Not Assessed	N				
AU ID	AU Name		Water Type	Size	Location Description	
UT16030005-008_00	Sevier River-27		RIVER	2.644 MILES	Sevier River south side tributaries from DMAD Reservoir upstream to Yuba Dam, excluding all waters above USFS boundary	
Use	Attainment	Threatened	Cause	Cycle First Listed	TMDL Status	Source

Assessment Results for Sevier River Watershed Stream Assessment Units						
Agricultural	Not Assessed	N				
Secondary Recreation	Not Assessed	N				
Warm Water Aquatic Life	Not Assessed	N				
AU ID	AU Name		Water Type	Size	Location Description	
UT16030005-011_00	Chicken Creek-3		RIVER	14.675 MILES	Sevier River drainage streams south of Chicken Creek and above USFS boundary flowing towards Sevier River	
Use	Attainment	Threatened	Cause	Cycle First Listed	TMDL Status	Source
Agricultural	Not Assessed	N				
Cold Water Aquatic Life	Not Assessed	N				
Secondary Recreation	Not Assessed	N				

Assessment Results for Sevier River Watershed Stream Assessment Units

AU ID	AU Name		Water Type	Size	Location Description	
UT16030005-012_00	Ivie Creek		RIVER	14.5 MILES	Ivie Creek and tributaries from Scipio Dam to headwaters	
Use	Attainment	Threatened	Cause	Cycle First Listed	TMDL Status	Source
Agricultural	Not Assessed	N				
Cold Water Aquatic Life	Not Assessed	N				
Secondary Recreation	Not Assessed	N				
AU ID	AU Name		Water Type	Size	Location Description	
UT16030005-013_00	Goose Creek-1		RIVER	1.003 MILES	Goose Creek and tributaries from mouth to USFS boundary	
Use	Attainment	Threatened	Cause	Cycle First Listed	TMDL Status	Source

Assessment Results for Sevier River Watershed Stream Assessment Units						
Agricultural	Not Assessed	N				
Secondary Recreation	Not Assessed	N				
Warm Water Aquatic Life	Not Assessed	N				
AU ID	AU Name		Water Type	Size	Location Description	
UT16030005-014_00	Goose Creek-2		RIVER	0.703 MILES	Goose Creek and tributaries from USFS boundary to headwaters	
Use	Attainment	Threatened	Cause	Cycle First Listed	TMDL Status	Source
Agricultural	Not Assessed	N				
Cold Water Aquatic Life	Not Assessed	N				
Secondary Recreation	Not Assessed	N				

Assessment Results for Sevier River Watershed Stream Assessment Units

AU ID	AU Name		Water Type	Size	Location Description	
UT16030005-015_00	Pioneer Creek-1		RIVER	0.399 MILES	Pioneer Creek and tributaries from mouth to USFS boundary	
Use	Attainment	Threatened	Cause	Cycle First Listed	TMDL Status	Source
Agricultural	Not Assessed	N				
Secondary Recreation	Not Assessed	N				
Warm Water Aquatic Life	Not Assessed	N				
AU ID	AU Name		Water Type	Size	Location Description	
UT16030005-016_00	Pioneer Creek-2		RIVER	4.379 MILES	Pioneer Creek and tributaries from USFS boundary to headwaters	
Use	Attainment	Threatened	Cause	Cycle First Listed	TMDL Status	Source

Assessment Results for Sevier River Watershed Stream Assessment Units						
Agricultural	Not Assessed	N				
Cold Water Aquatic Life	Not Assessed	N				
Secondary Recreation	Not Assessed	N				
AU ID	AU Name		Water Type	Size	Location Description	
UT16030005-017_00	Sevier River-23		RIVER	1.507 MILES	Sevier River south side tributaries from Gunnison bend reservoir upstream to DMAD Reservoir	
Use	Attainment	Threatened	Cause	Cycle First Listed	TMDL Status	Source
Agricultural	Not Assessed	N				
Cold Water Aquatic Life	Not Assessed	N				
Secondary Recreation	Not Assessed	N				

Assessment Results for Sevier River Watershed Stream Assessment Units

AU ID	AU Name		Water Type	Size	Location Description	
UT16030005-018_00	Chalk Creek-1		RIVER	0 MILES	Chalk Creek and Pine Creek (Millard County) and tributaries from mouth to USFS boundary	
Use	Attainment	Threatened	Cause	Cycle First Listed	TMDL Status	Source
Agricultural	Not Assessed	N				
Cold Water Aquatic Life	Not Assessed	N				
Secondary Recreation	Not Assessed	N				
AU ID	AU Name		Water Type	Size	Location Description	
UT16030005-019_00	Chalk Creek-2		RIVER	33.844 MILES	Chalk Creek and Pine Creek (Millard County) and tributaries from USFS boundary to headwaters	
Use	Attainment	Threatened	Cause	Cycle First Listed	TMDL Status	Source

Assessment Results for Sevier River Watershed Stream Assessment Units						
Agricultural	Fully Supporting	N				
Cold Water Aquatic Life	Fully Supporting	N				
Secondary Recreation	Not Assessed	N				
AU ID	AU Name		Water Type	Size	Location Description	
UT16030005-020_00	Chicken Creek-1		RIVER	17.768 MILES	Chicken Creek and tributaries from Levan to headwaters	
Use	Attainment	Threatened	Cause	Cycle First Listed	TMDL Status	Source
Agricultural	Fully Supporting	N				
Cold Water Aquatic Life	Fully Supporting	N				
Secondary Recreation	Not Assessed	N				

Assessment Results for Sevier River Watershed Stream Assessment Units

AU ID	AU Name		Water Type	Size	Location Description	
UT16030005-021_00	Corn Creek		RIVER	45.942 MILES	Corn Creek and tributaries from mouth to headwaters	
Use	Attainment	Threatened	Cause	Cycle First Listed	TMDL Status	Source
Agricultural	Fully Supporting	N				
Cold Water Aquatic Life	Fully Supporting	N				
Secondary Recreation	Not Assessed	N				
AU ID	AU Name		Water Type	Size	Location Description	
UT16030005-022_00	Chicken Creek-2		RIVER	24.51 MILES	Chicken Creek and tributaries from confluence with Sevier River to Levan	
Use	Attainment	Threatened	Cause	Cycle First Listed	TMDL Status	Source

Assessment Results for Sevier River Watershed Stream Assessment Units

Agricultural	Not Supporting	N	Total Dissolved Solids	1998	High Priority	<ul style="list-style-type: none"> • Natural Sources • Hydromodification
Cold Water Aquatic Life	Fully Supporting	N				
Secondary Recreation	Not Assessed	N				
AU ID	AU Name		Water Type	Size	Location Description	
UT16030005-023_00	Meadow Creek		RIVER	6.975 MILES	Meadow Creek and tributaries from mouth to headwaters (Juab County)	
Use	Attainment	Threatened	Cause	Cycle First Listed	TMDL Status	Source
Agricultural	Fully Supporting	N				
Cold Water Aquatic Life	Fully Supporting	N				
Secondary Recreation	Not Assessed	N				

Assessment Results for Sevier River Watershed Stream Assessment Units

AU ID	AU Name		Water Type	Size	Location Description	
UT16030005-024_00	Round Valley Creek		RIVER	0 MILES	Round Valley Creek from mouth upstream to Scipio Reservoir	
Use	Attainment	Threatened	Cause	Cycle First Listed	TMDL Status	Source
Agricultural	Not Assessed	N				
Cold Water Aquatic Life	Not Assessed	N				
Secondary Recreation	Not Assessed	N				
AU ID	AU Name		Water Type	Size	Location Description	
UT16030005-025_00	Sevier River-20		RIVER	34.432 MILES	Sevier River from U-132 crossing at the northern most point of the Sevier River (near Dog Valley Wash confluence) upstream to Yuba Dam	

Assessment Results for Sevier River Watershed Stream Assessment Units

Use	Attainment	Threatened	Cause	Cycle First Listed	TMDL Status	Source
Agricultural	Fully Supporting	N	Benthic-Macroinvertebrate Bioassessments Phosphorus (Total) Physical substrate habitat alterations Sedimentation/Siltation	2010 2006 2006	Low Priority Completed Pollution Completed	<ul style="list-style-type: none"> • Source Unknown • Agriculture
Secondary Recreation	Not Assessed	N				<ul style="list-style-type: none"> • Hydromodification
Warm Water Aquatic Life	Not Supporting	N				<ul style="list-style-type: none"> • Natural Sources
AU ID	AU Name		Water Type	Size	Location Description	
UT16030005-026_00	Sevier River-22		RIVER	42.265 MILES	Sevier River from DMAD Reservoir upstream to U-132 crossing at the northern most point of the Sevier River (near Dog Valley Wash)	
Use	Attainment	Threatened	Cause	Cycle First Listed	TMDL Status	Source
Agricultural	Fully Supporting	N				<ul style="list-style-type: none"> • Irrigated Crop Production

Assessment Results for Sevier River Watershed Stream Assessment Units

Secondary Recreation	Not Assessed	N				<ul style="list-style-type: none"> • Agriculture • Hydromodification • Livestock (Grazing or Feeding Operations)
Warm Water Aquatic Life	Not Supporting	N	Phosphorus (Total) Physical substrate habitat alterations Sedimentation/Siltation	2006 2006	Completed Pollution Completed	
AU ID	AU Name		Water Type	Size	Location Description	
UT16030005-027_00	Sevier River-24		RIVER	17.453 MILES	Sevier River from Gunnison Bend Reservoir to DMAD Reservoir	
Use	Attainment	Threatened	Cause	Cycle First Listed	TMDL Status	Source
Agricultural	Fully Supporting	N				<ul style="list-style-type: none"> • Agriculture • Hydromodification
Secondary Recreation	Not Assessed	N				<ul style="list-style-type: none"> • Natural Sources
Warm Water Aquatic Life	Not Supporting	N	Phosphorus (Total) Physical substrate habitat alterations Sedimentation/Siltation	2006 2006	Completed Pollution Completed	

Assessment Results for Sevier River Watershed Stream Assessment Units

AU ID	AU Name		Water Type	Size	Location Description	
UT16030005-028_00	Sevier River-25		RIVER	18.664 MILES	Sevier River from Crafts Lake to Gunnison Bend Reservoir	
Use	Attainment	Threatened	Cause	Cycle First Listed	TMDL Status	Source
Agricultural	Not Supporting	N	Boron	2008	Low Priority	<ul style="list-style-type: none"> • Natural Sources
Non-Game Fish and Other Aquatic Life	Fully Supporting	N				
Secondary Recreation	Not Assessed	N				
AU ID	AU Name		Water Type	Size	Location Description	
UT16030005-029_00	Sevier River-26		RIVER	0.324 MILES	Sevier River north side tributaries from Gunnison Bend Reservoir to DMAD Reservoir	
Use	Attainment	Threatened	Cause	Cycle First Listed	TMDL Status	Source

Assessment Results for Sevier River Watershed Stream Assessment Units

Agricultural	Not Assessed	N				
Non-Game Fish and Other Aquatic Life	Not Assessed	N				
Secondary Recreation	Not Assessed	N				

Table 8-4 Summary of Individual Lake and Reservoir Support for Sevier River Watershed Management Unit

Summary of Individual Lake and Reservoir Support for Sevier River Watershed Management Unit																	
		Parameters Not Supporting 2010								Assessment Cycle							
Assessment		Assessment Category	Assessment Category	Parameters Not Supporting						Total P > 0.025 mg/L or TSI>50	Winter DO/Fish Kills	Cyano Bacteria Present					
Unit ID	Name	2008	2010	2008	DO	pH	T	Other	TSI>50				2002	2004	2006	2008	2010
UT-L-16030003-005	Barney Lake	2	2									Y	NS	FS	FS	FS	FS
UT-L-16030005-026	DMAD Reservoir	2	2						ND			Y	FS	FS	FS	FS	
UT-L-16030005-021	Gunnison Bend Reservoir	2	2									N	FS	FS	FS	FS	

Summary of Individual Lake and Reservoir Support for Sevier River Watershed Management Unit

		Parameters Not Supporting 2010								Assessment Cycle					
Assessment Unit ID	Name	Assessment Category 2008	Assessment Category 2010	Parameters Not Supporting				Total P > 0.025 mg/L or TSI>50	Winter DO/Fish Kills	Cyano Bacteria Present	2002	2004	2006	2008	2010
				DO	pH	T	Other								
UT-L-16030004-002	Gunnison Reservoir	2	2							N	FS	FS	FS	FS	
UT-L-16030002-011	Koosharem Reservoir	4	3B	pH	FS	NS	FS	TP		Y	NS	NS	NS	NS	
UT-L-16030002-005	Lower Box Reservoir	4	5	pH	FS	FS	NS	TP		Y	NS	NS	NS	NS	
UT-L-16030003-006	Manning Meadow Reservoir	5	5	DO	NS	FS	FS	No	DO/FK	N	NS	NS	NS	NS	

Summary of Individual Lake and Reservoir Support for Sevier River Watershed Management Unit

		Parameters Not Supporting 2010								Assessment Cycle						
Assessment Unit ID	Name	Assessment Category 2008	Assessment Category 2010	Parameters Not Supporting 2008	Parameters				Total P > 0.025 mg/L or TSI>50	Winter DO/Fish Kills	Cyano Bacteria Present	2002	2004	2006	2008	2010
					DO	pH	T	Other								
UT-L-16030001-001	Navajo Lake	5	5, 3B	DO	FS	FS	NS		No	DO/FK	NA	NS	NS	NS	NS	NS
UT-L-16030004-001	Nine Mile Reservoir	5	5	pH,DO	FS	FS	FS		No		N	NS	NS	NS	NS	FS
UT-L-16030002-004	Otter Creek Reservoir	4	4	DO,T							Y	NS	NS	NS	NS	
UT-L-16030004-005	Palisades Lake	5	5	T							N	NS	NS	NS	NS	FS

Summary of Individual Lake and Reservoir Support for Sevier River Watershed Management Unit

		Parameters Not Supporting 2010								Assessment Cycle						
Assessment	Name	Assessment Category	Assessment Category	Parameters Not Supporting	Parameters				Total P > 0.025 mg/L or TSI>50	Winter DO/Fish Kills	Cyano Bacteria Present	2002	2004	2006	2008	2010
					DO	pH	T	Other								
Unit ID		2008	2010	2008	DO	pH	T	Other	TSI>50							
UT-L-16030001-006	Panguitch Lake	4	4	DO, pH	FS	FS	FS		TP		Y	NS	NS	NS	NS	FS
UT-L-16030002-007	Pine Lake	2	2		FS	FS	FS		No		N	NS	NS	NS	FS	FS
UT-L-16030001-011	Piute Reservoir	5	5	T	FS	FS	NS		TP		Y	NS	NS	NS	FS	NS
UT-L-16030003-012	Redmond Lake	2	2	FS							N	FS	FS	FS	FS	

Summary of Individual Lake and Reservoir Support for Sevier River Watershed Management Unit

		Parameters Not Supporting 2010								Assessment Cycle							
		Assessment	Assessment	Parameters						Total P	Winter	Cyano					
		Category	Category	Not Supporting	DO	pH	T	Other	mg/L or TSI>50	DO/Fish	Bacteria	2002	2004	2006	2008	2010	
Assessment	Name	2008	2010	2008							Kills	Present					
Unit ID																	

UT-L-16030003-016	Rex's Reservoir	2	2	FS							N	FS	FS	FS	FS	
UT-L-16030003-007	Sevier Bridge Reservoir	2	2	FS							Y	FS	FS	FS	FS	
UT-L-16030002-002	Tropic Reservoir	2	2	FS							N	FS	FS	FS	FS	

Summary of Individual Lake and Reservoir Support for Sevier River Watershed Management Unit

		Parameters Not Supporting 2010								Assessment Cycle						
		Assessment	Assessment	Parameters					Total P							
		Category	Category	Not Supporting					> 0.025 mg/L or	Winter DO/Fish	Cyano Bacteria					
Assessment		2008	2010	2008	DO	pH	T	Other	TSI>50	Kills	Present	2002	2004	2006	2008	2010
Unit ID	Name															

Notes:

FS Fully Supporting

NS Not Supporting

Y Yes

N No

DO Dissolved Oxygen

FK Fish Kill

T Temperature

Total P Total Phosphorus

NA Not Analyzed

Table 8-5 Individual Lake and Reservoir 2010 Trophic State Index (TSI) – Sevier River Watershed

Individual Lake and Reservoir 2010 Trophic State Index (TSI)						
Sevier River Watershed						
Watershed Management Unit	Assessment Unit	Name	Date	TSI-SD	TSI-Chla	TSI-TP
Sevier River	UT-L-16030002-011	Koosharem Reservoir	8/1/2007	76	25	55
Sevier River	UT-L-16030002-005	Lower Box Creek Reservoir	8/9/2007	67	47	57
Sevier River	UT-L-16030003-006	Manning Meadow Reservoir	8/8/2007	49	52	52
Sevier River	UT-L-16030001-001	Navajo Lake	8/22/2007	43		37
Sevier River	UT-L-16030004-001	Nine Mile Reservoir	9/13/2007	37	46	51
Sevier River	UT-L-16030001-006	Panguitch Lake	9/4/2007	41	46	58
Sevier River	UT-L-16030001-006	Panguitch Lake	9/4/2007	58	46	41
Sevier River	UT-L-16030002-007	Pine Lake	7/11/2007	33	36	37
Sevier River	UT-L-16030001-011	Piute Reservoir	7/5/2007	50	8	37
Sevier River	UT-L-16030001-011	Piute Reservoir	7/30/2007	53	61	62

Individual Lake and Reservoir 2010 Trophic State Index (TSI)

Sevier River Watershed

Watershed Management Unit	Assessment Unit	Name	Date	TSI-SD	TSI-Chla	TSI-TP
----------------------------------	------------------------	-------------	-------------	---------------	-----------------	---------------

Notes:

TSI-SD = Trophic State Index from secchi disk

TSI-Chla = Trophic State Index from chlorophyll-a

TSI-TP = Trophic State Index from total phosphorus

Table 8-6 Summary of Individual Lake and Reservoir Trophic State Index (TSI) – Sevier River Watershed

Summary of Individual Lake and Reservoir Trophic State Index (TSI)														
Sevier River Watershed														
Watershed Management Unit	Assessment Unit	Lake / Reservoir	Assessment Cycle Trophic State Index										Trophic State	
			1992	1994	1996	1998	2000	2002	2004	2008	2010 Old Method	2010 Current Method	2010 Old Method	2010 Current Method
Sevier River	UT-L-16030002-011	Koosharem Reservoir	74	55	66	57	65	57	52	57	52	25	M	O
Sevier River	UT-L-16030002-005	Lower Box Reservoir		77	75	73	65	66	64	61	51	47	E	M
Sevier River	UT-L-16030003-006	Manning Meadow Reservoir		54	50	50	53	NA	52	54	51	46	E	M
Sevier River	UT-L-16030001-001	Navajo Lake	34	35	40	41	40	43	36	36	40	37	M	O
Sevier River	UT-L-16030004-001	Nine Mile Reservoir	45	59	53	45	52	37	53	46	45	46	M	M

Summary of Individual Lake and Reservoir Trophic State Index (TSI)

Sevier River Watershed

Watershed Management Unit	Assessment Unit	Lake / Reservoir	Assessment Cycle Trophic State Index										Trophic State	
			1992	1994	1996	1998	2000	2002	2004	2008	2010 Old Method	2010 Current Method	2010 Old Method	2010 Current Method
Sevier River	UT-L-16030001-006	Panguitch Lake	54	51	53	50	51	62	46	59	48	46	M	M
Sevier River	UT-L-16030002-007	Pine Lake	44	34	20	31	42	53	39	30	35	36	O	O
Sevier River	UT-L-16030001-011	Piute Reservoir	57	54	46	48	55	56	51	51	45	34	M	O

Summary of Individual Lake and Reservoir Trophic State Index (TSI)

Sevier River Watershed

Watershed Management Unit	Assessment Unit	Lake / Reservoir	Assessment Cycle Trophic State Index										Trophic State	
			1992	1994	1996	1998	2000	2002	2004	2008	2010 Old Method	2010 Current Method	2010 Old Method	2010 Current Method

Notes:

2010 Old Method TSI calculated using the 2008 Integrated Report Methodology

2010 Current Method TSI calculated using the 2010 Integrated Report Methodology of only chlorophyll-a

O = Oligotrophic

M = Mesotrophic

E = Eutrophic

H = Hypereutrophic

FIGURES

Sevier River Management Unit

Beneficial Use Classification and Monitoring Sites

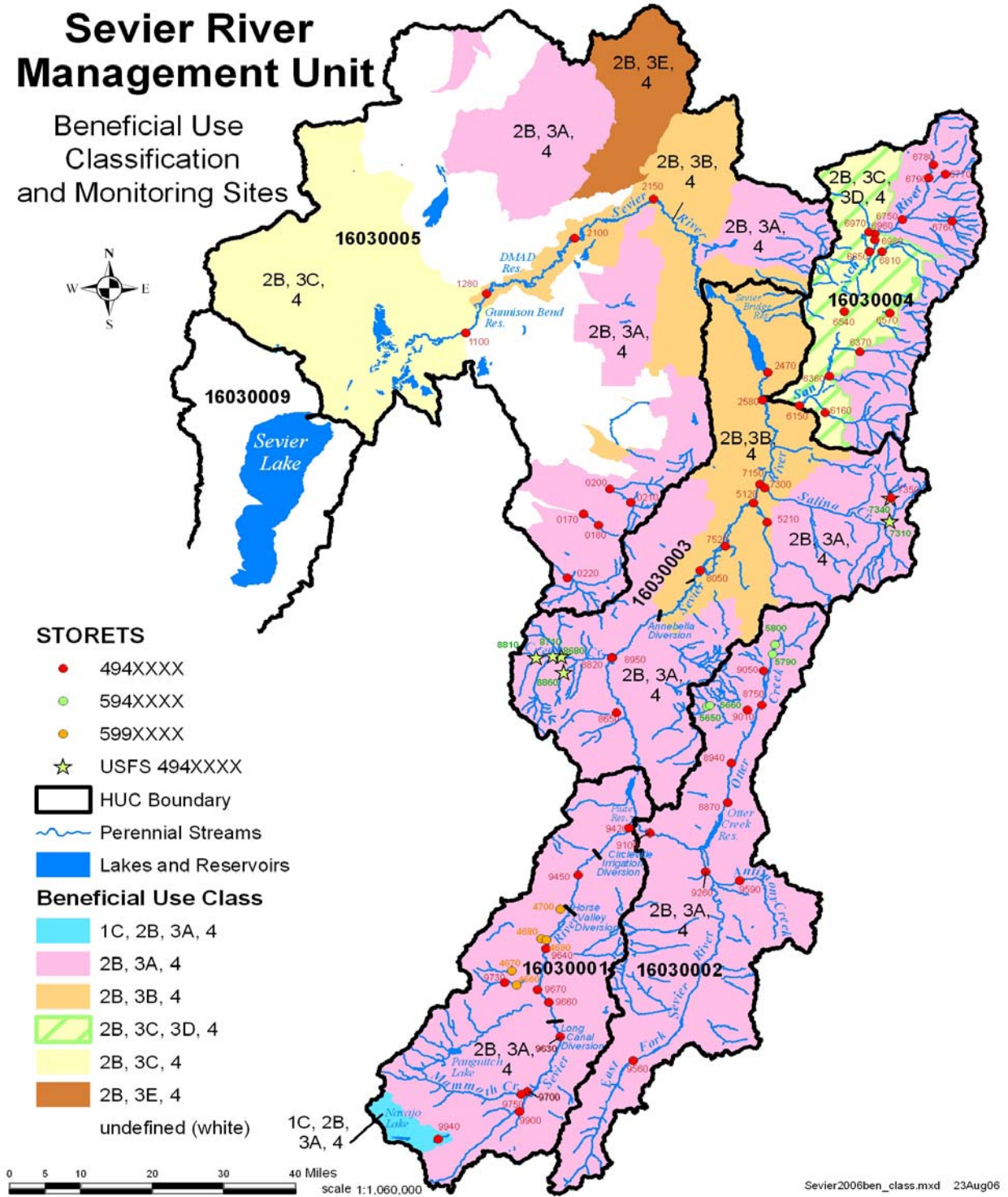


Figure 8-1 Beneficial Use Classifications for Sevier River Watershed Management Unit