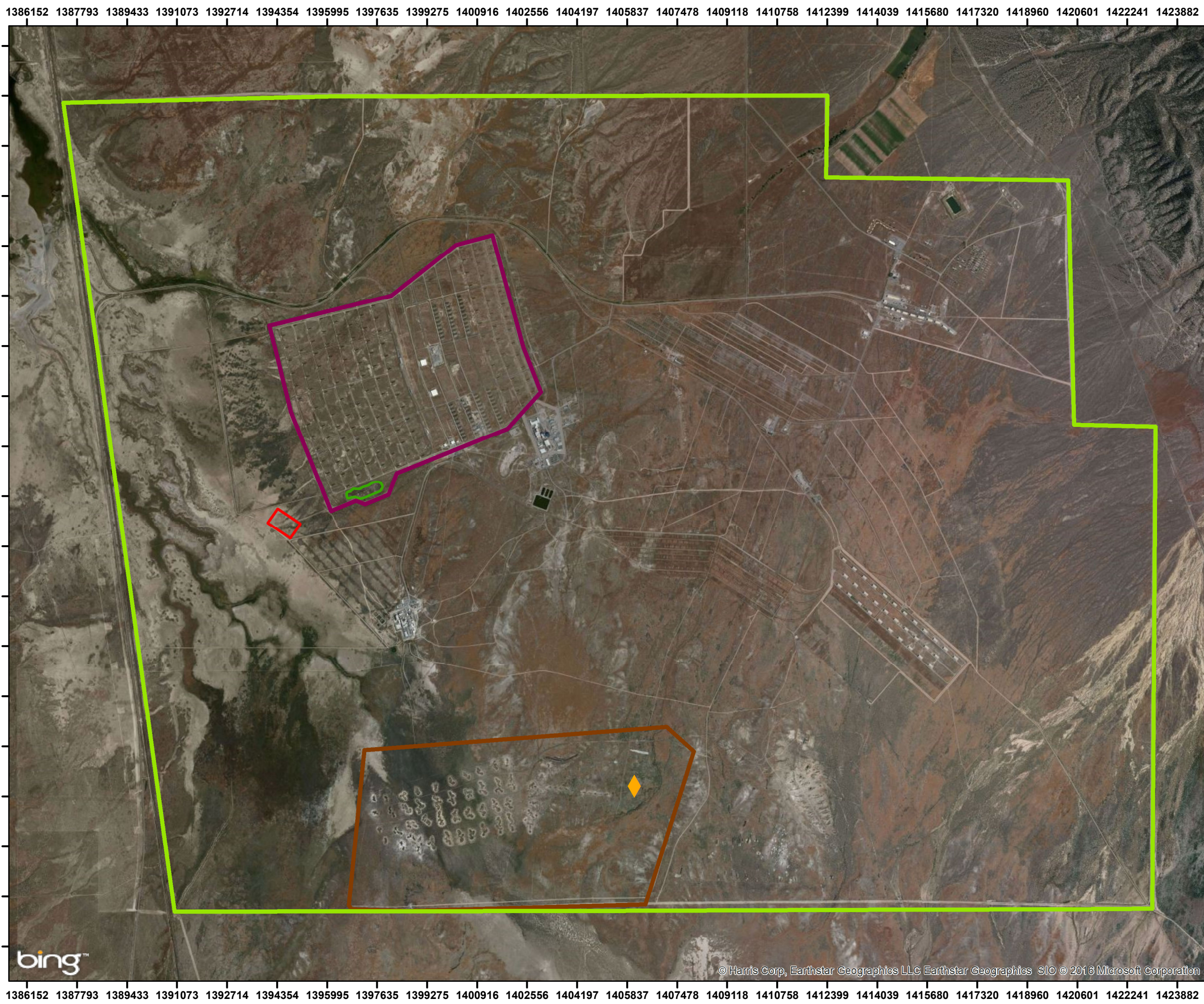


Document Path: M:\GIS\Deseret\MXDs\Draft\ID_Figure_1-2_Deseret.mxd



LEGEND

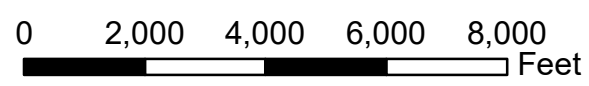
- DCD Installation Boundary
- SWMU 2
- SWMU 2 OB Area
- Predetermined Burn Location (SWMU 25)
- AREA 10/SWMU 11
- SWMU 25

LOCATION MAP

Image courtesy of NASA
Earthstar Geographics SIO ©
2016 Microsoft Corporation ©
2010 NAVTEQ

NOTES & SOURCES

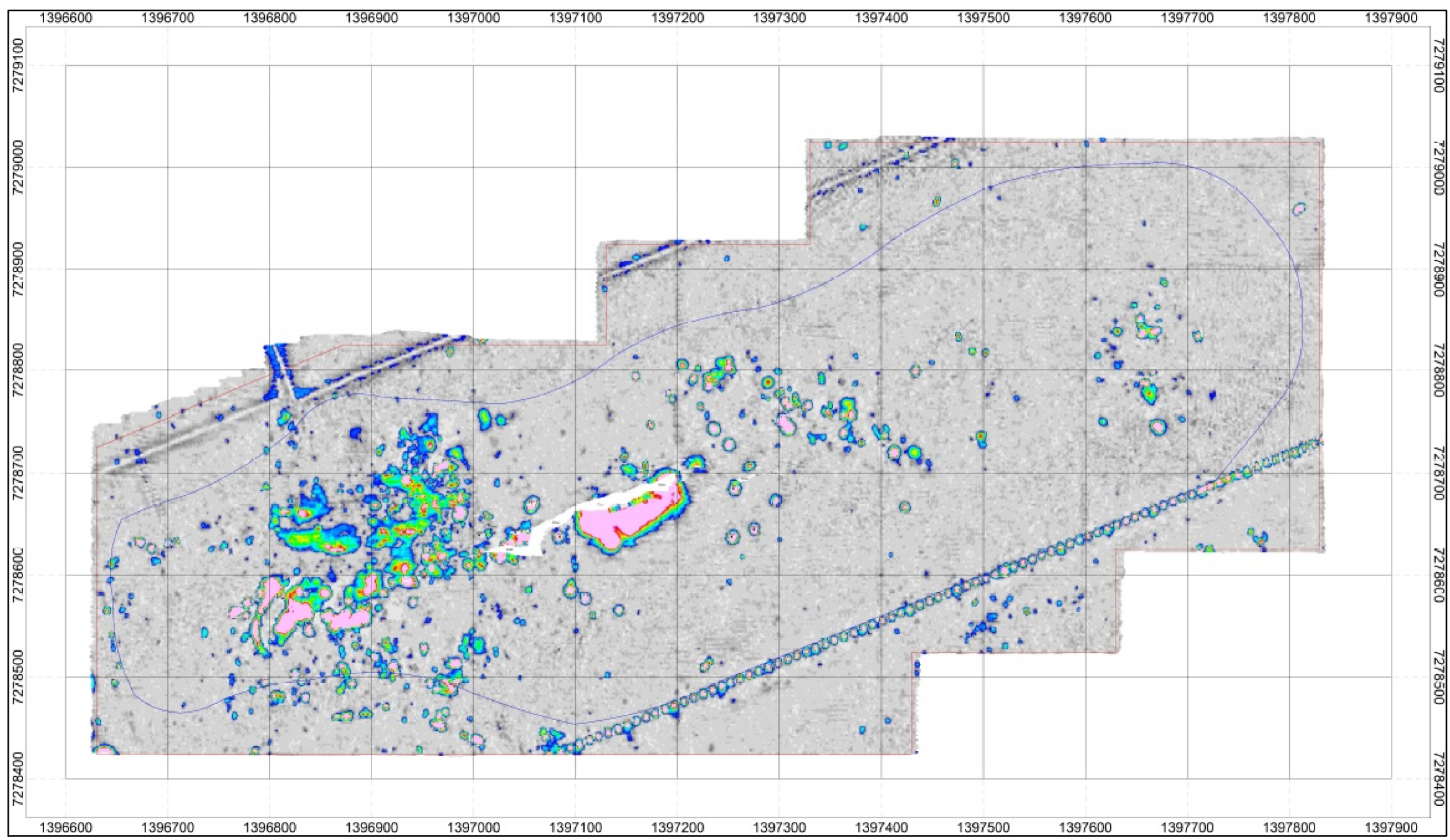
Map Coordinates: NAD 1983 StatePlane
Utah Central FIPS 4302 (US Feet)



TITLE

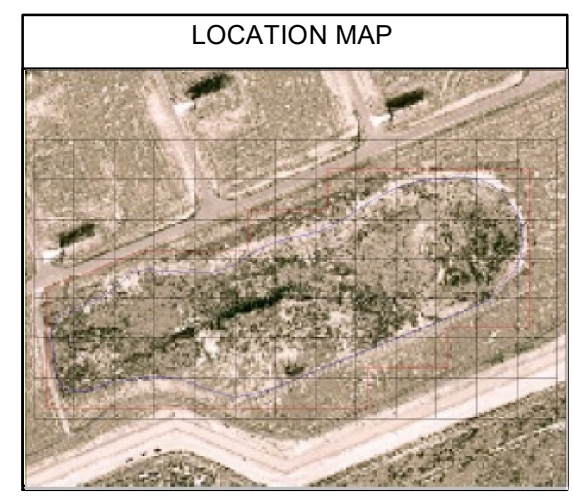
Overall Site Map
SWMU 2 INTERIN REMEDIAL ACTION
TOOELE ARMY DEPOT - SOUTH AREA, UT

	ATLANTA, GEORGIA	
	HUNTSVILLE CENTER	
DRAWING DATE: 03/17/2016		FIGURE 1-2
Drawn by: STEPHEN CALLIHAN	Reviewed by: BRIAN BARKER	



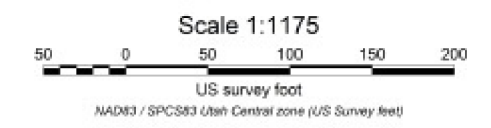
LEGEND

- SWMU 2
- Area of EM61 investigation



NOTES & SOURCES

Map Coordinates: NAD 1983
StatePlane Utah Central FIPS 4302 (US Feet)



TITLE

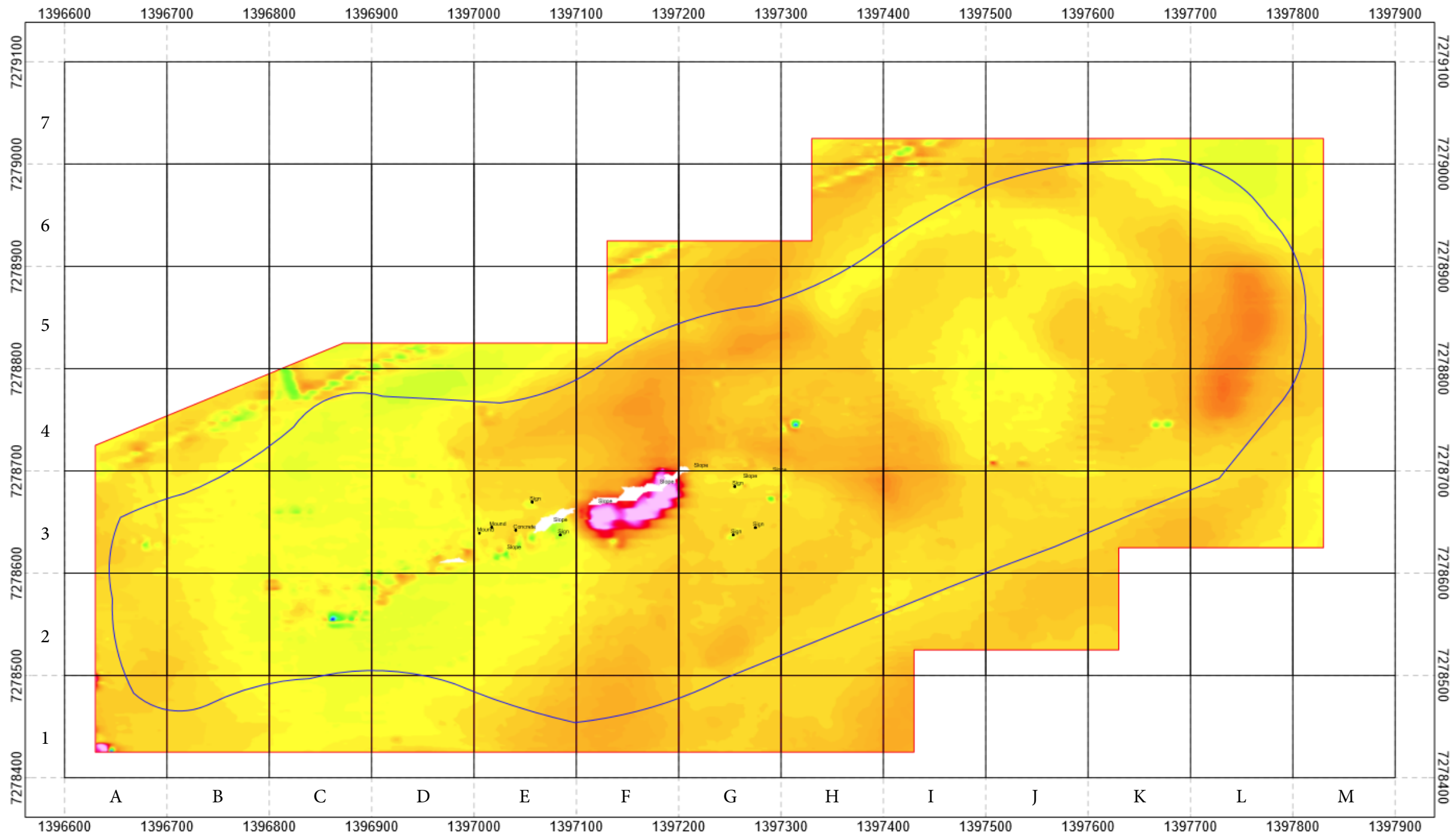
**EM61 Mk2 Bottom Coil
EM 61 Data Mosaic
SWMU 2 INTERIM REMEDIAL ACTION
TOOELE ARMY DEPOT-SOUTH AREA, UT**

	ATLANTA, GEORGIA
	U.S. ARMY CORPS OF ENGINEERS HUNTSVILLE CENTER
DRAWING DATE: 03/27/2013	
Compiled by: S. CALLIHAN (03/23/2016)	Reviewed by: BRIAN BARKER

N

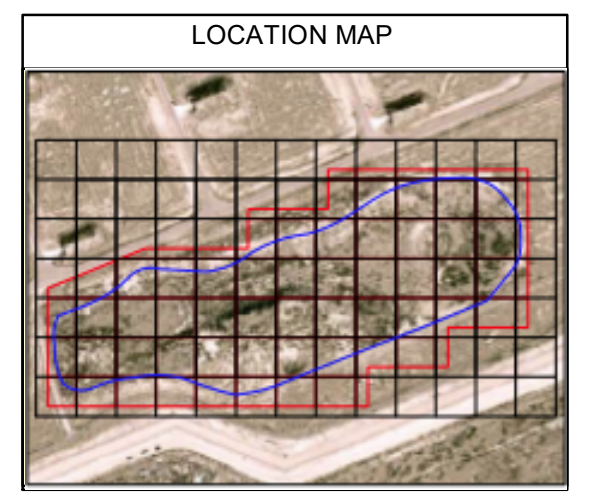
FIGURE
1-3

Document Path: M:\GIS\Deseret\MXDs\Draft\ID_Figure_1-3_Deseret.mxd



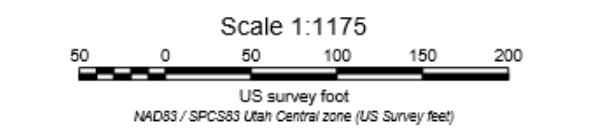
LEGEND

- SWMU 2 (Proposed)
- Area of Investigation
- Culture



NOTES & SOURCES

Map Coordinates: NAD 1983
StatePlane Utah Central FIPS 4302 (US Feet)




TITLE

**EM31 Inphase
EM31 Data Mosaic
SWMU 2 INTERIM REMEDIAL ACTION
TOOELE ARMY DEPOT-SOUTH AREA, UT**

	ATLANTA, GEORGIA
	U.S. ARMY CORPS OF ENGINEERS HUNTSVILLE CENTER
DRAWING DATE: 03/27/2013	
Compiled by: S. CALLIHAN (05/04/2016)	Reviewed by: BRIAN BARKER

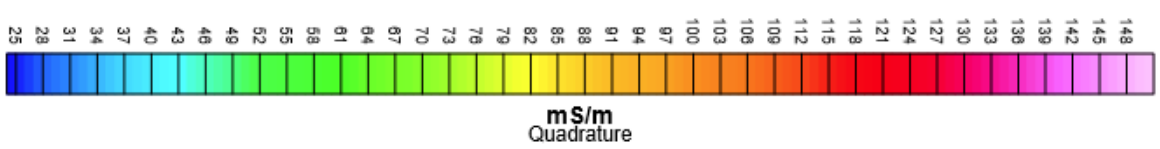
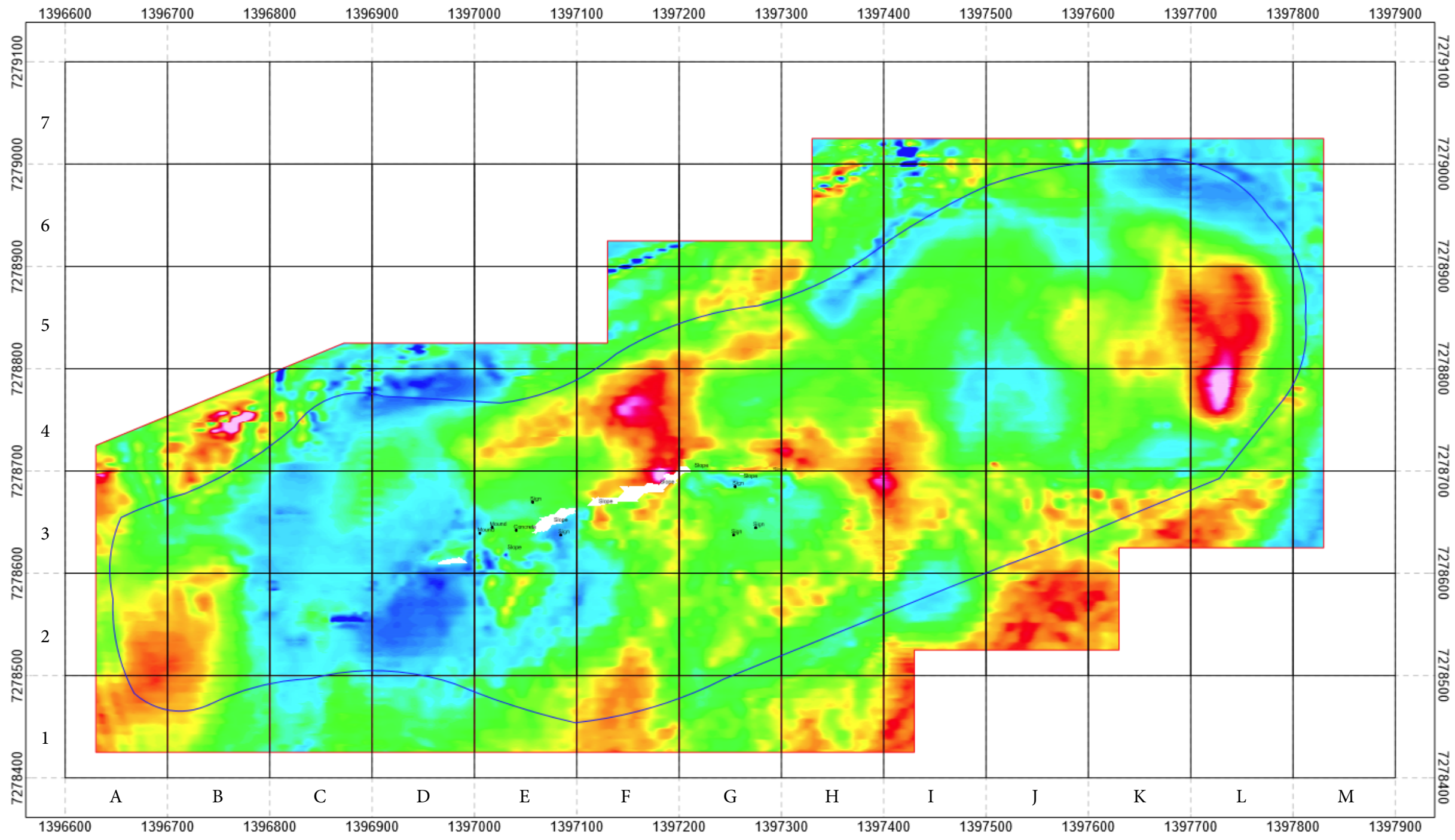
N



FIGURE

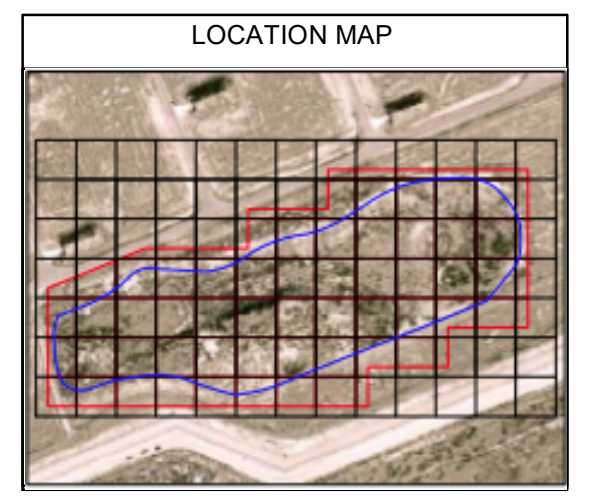
1-4

Document Path: M:\GIS\Deseret\MXDs\Draft\1-3_Deseret.mxd



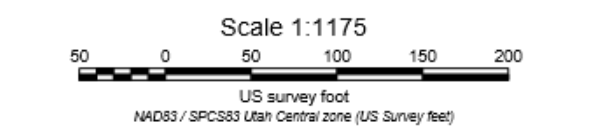
LEGEND

- SWMU 2 (Proposed)
- Area of Investigation
- Culture



NOTES & SOURCES

Map Coordinates: NAD 1983
StatePlane Utah Central FIPS 4302 (US Feet)



TITLE

**EM31 Quadrature/Terrain Conductivity
EM31 Data Mosaic
SWMU 2 INTERIM REMEDIAL ACTION
TOOELE ARMY DEPOT-SOUTH AREA, UT**

Kemron ENVIRONMENTAL SERVICES ATLANTA, GEORGIA

U.S. ARMY CORPS OF ENGINEERS HUNTSVILLE CENTER

DRAWING DATE: 03/27/2013

Compiled by: S. CALLIHAN (05/04/2016) Reviewed by: BRIAN BARKER

N

FIGURE

1-5

Document Path: M:\GIS\Deseret\MXDs\Draft\ID_Figure_1-6_Deseret.mxd



1394354

1395995

1397635

7278529

7278529

7276888

7276888

1394354

1395995

1397635

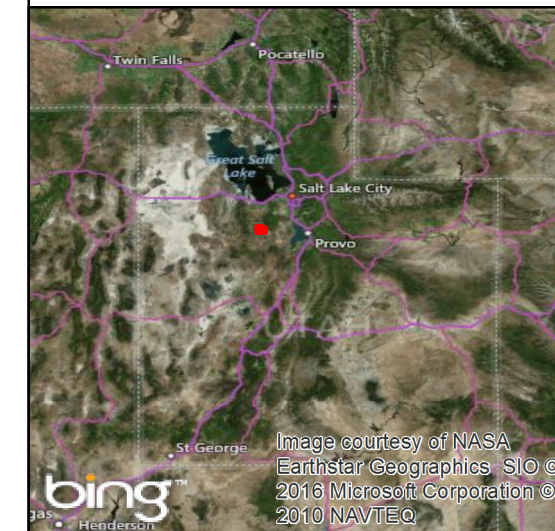
bing

Image courtesy of USGS Earthstar Geographics SIO © 2016 Microsoft Corporation

LEGEND

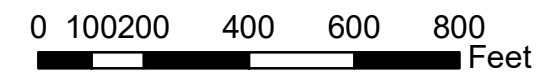
- SWMU 2 OB Area
- OB Processing Area
- SWMU 2
- Burn_Pan

LOCATION MAP





NOTES & SOURCES

Map Coordinates: NAD 1983 StatePlane
Utah Central FIPS 4302 (US Feet)



TITLE

SWMU 2 OB Area
SWMU 2 INTERIM REMEDIAL ACTION
TOOELE ARMY DEPOT - SOUTH AREA, UT

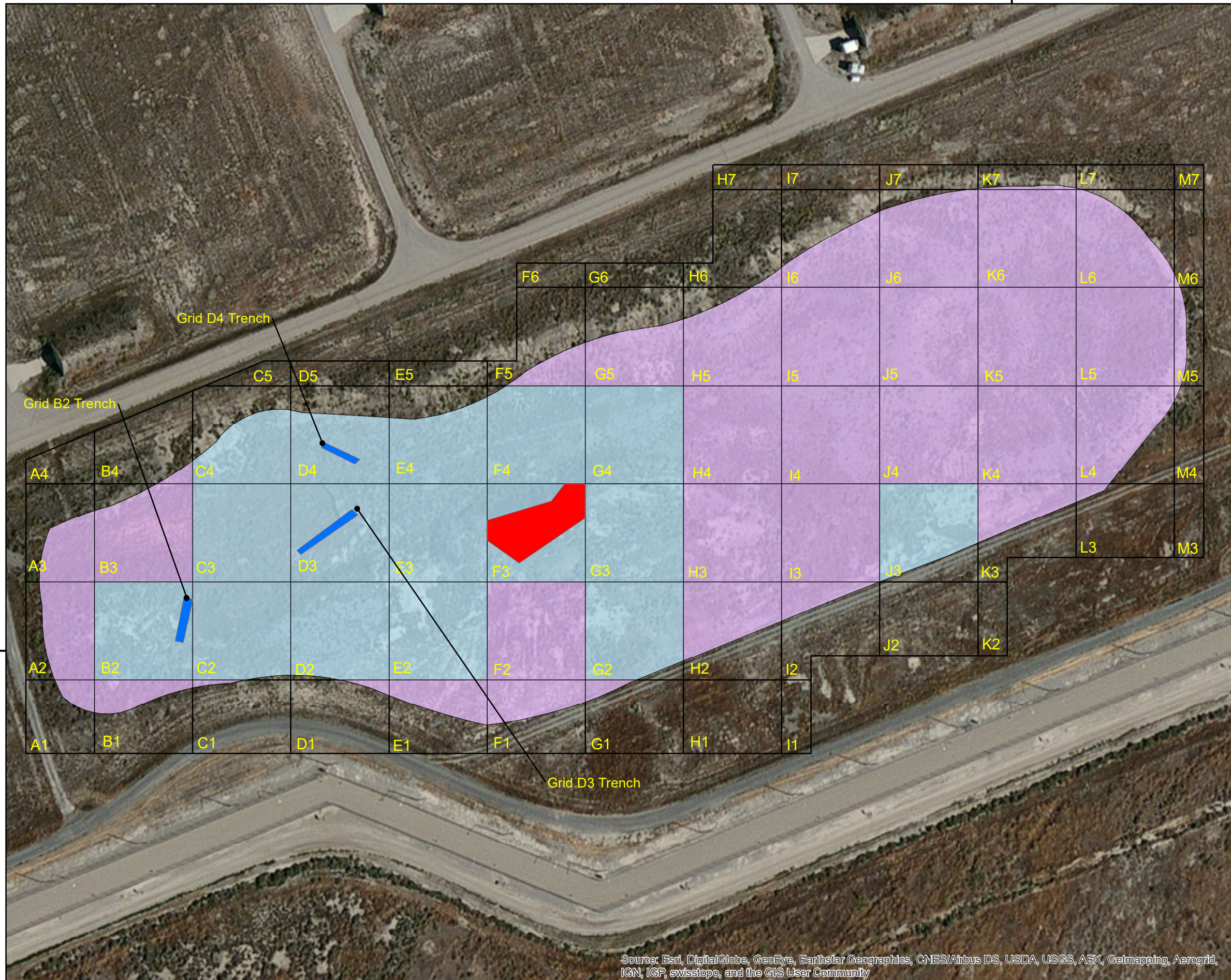
	ATLANTA, GEORGIA
	U.S. ARMY CORPS OF ENGINEERS HUNTSVILLE CENTER
DRAWING DATE: 03/17/2016	
Drawn by: STEPHEN CALLIHAN	Reviewed by: BRIAN BARKER



FIGURE

1-6

1397635



7278529

7278529

Source: Esri, DigitalGlobe, GeoEye, Earthstar Geographics, CNES/Airbus DS, USDA, USGS, AEX, Getmapping, Aerogrid, IGN, IGP, swisstopo, and the GIS User Community

1397635

LEGEND

- Location of DMM (Burial Pit)
- 100% Cleared Area w/QA
- Cleared Area w/o QA*

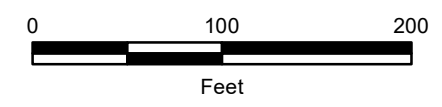
*This area was approved using the methods described in Field Change Request dated 16 June 2014

LOCATION MAP



NOTES & SOURCES

Map Coordinates: NAD 1983
StatePlane Utah Central FIPS 4302 (US Feet)



TITLE

**Cleared Area and MEC Location
SWMU 2 INTERIM REMEDIAL ACTION
TOOELE ARMY DEPOT-SOUTH AREA, UT**

KEMRON ENVIRONMENTAL SERVICES ATLANTA, GEORGIA

U.S. ARMY CORPS OF ENGINEERS HUNTSVILLE CENTER

DRAWING DATE: 03/17/2016

Drawn by: STEPHEN CALLIHAN Reviewed by: BRIAN BARKER



FIGURE

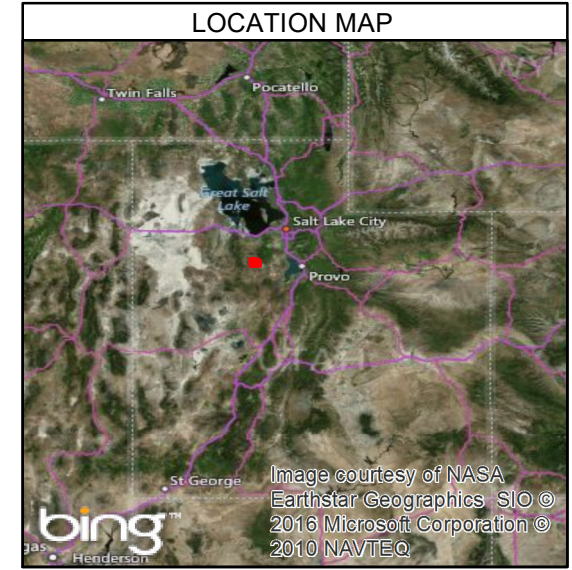
2-1

Document Path: M:\GIS\Deseret\MXDs\Draft\ID_Figure_2-2_Deseret.mxd



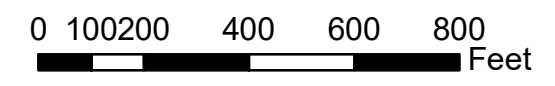
LEGEND

- SWMU 2
- OB Processing Area
- SWMU 2 OB Area
- Reseeded Area



NOTES & SOURCES

Map Coordinates: NAD 1983 StatePlane
Utah Central FIPS 4302 (US Feet)



TITLE

**Re-vegetation/Reseeding
of SWMU OB Area
SWMU 2 INTERIM REMEDIAL ACTION
TOOELE ARMY DEPOT - SOUTH AREA, UT**





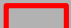

 ENVIRONMENTAL SERVICES	ATLANTA, GEORGIA	
	U.S. ARMY CORPS OF ENGINEERS HUNTSVILLE CENTER	
DRAWING DATE: 03/17/2016		FIGURE 2-2
Drawn by: STEPHEN CALLIHAN	Reviewed by: BRIAN BARKER	

Image courtesy of USGS Earthstar Geographics SIO © 2016 Microsoft Corporation



Project: 35DK2106
 Date: Dec 2015
 Revision: 1
 Prepared By: JP/PJL
 Checked By: PJL

Legend

-  **Open Burn**
-  **SWMU 2 Burial Pit**
-  **Incremental Sampling Method Decision Units**

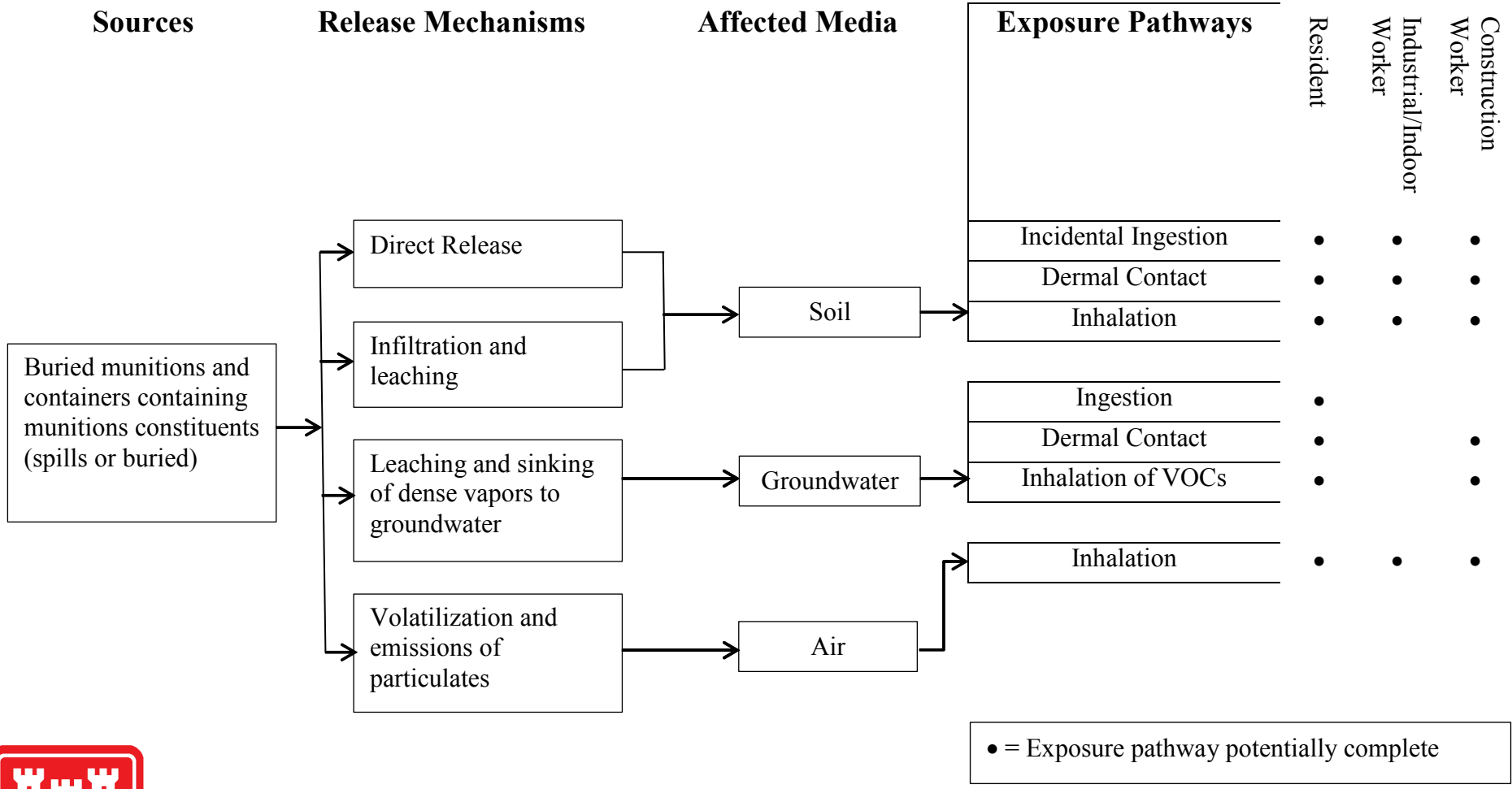


SWMU 2 Site Map
Tooele Army Depot - South

Deseret Chemical Depot
 Stockton, Utah

Path: Y:\GIS\DCD\Projects\35DK2106\44990\ArcGIS\SWMU2_Site_Map.mxd

Figure 5-1



Project: 35DK2106
 Date: Dec 2015
 Revision: 1
 Prepared By: JP/PJL
 Checked By: PJL

Legend

SWMU 2 Conceptual Site Model, TEAD-S
 Tooele Army Depot - South

Deseret Chemical Depot
 Stockton, Utah





Path: Y:\GIS\DCDI\Projects\35DK2106\A4990\ArcGIS\SWMU2_CSM.mxd

Figure 5-2



Project: 35DK2103
 Date: Dec 2015
 Revision: 1
 Prepared By: JP/PJL
 Checked By: PJL

Legend

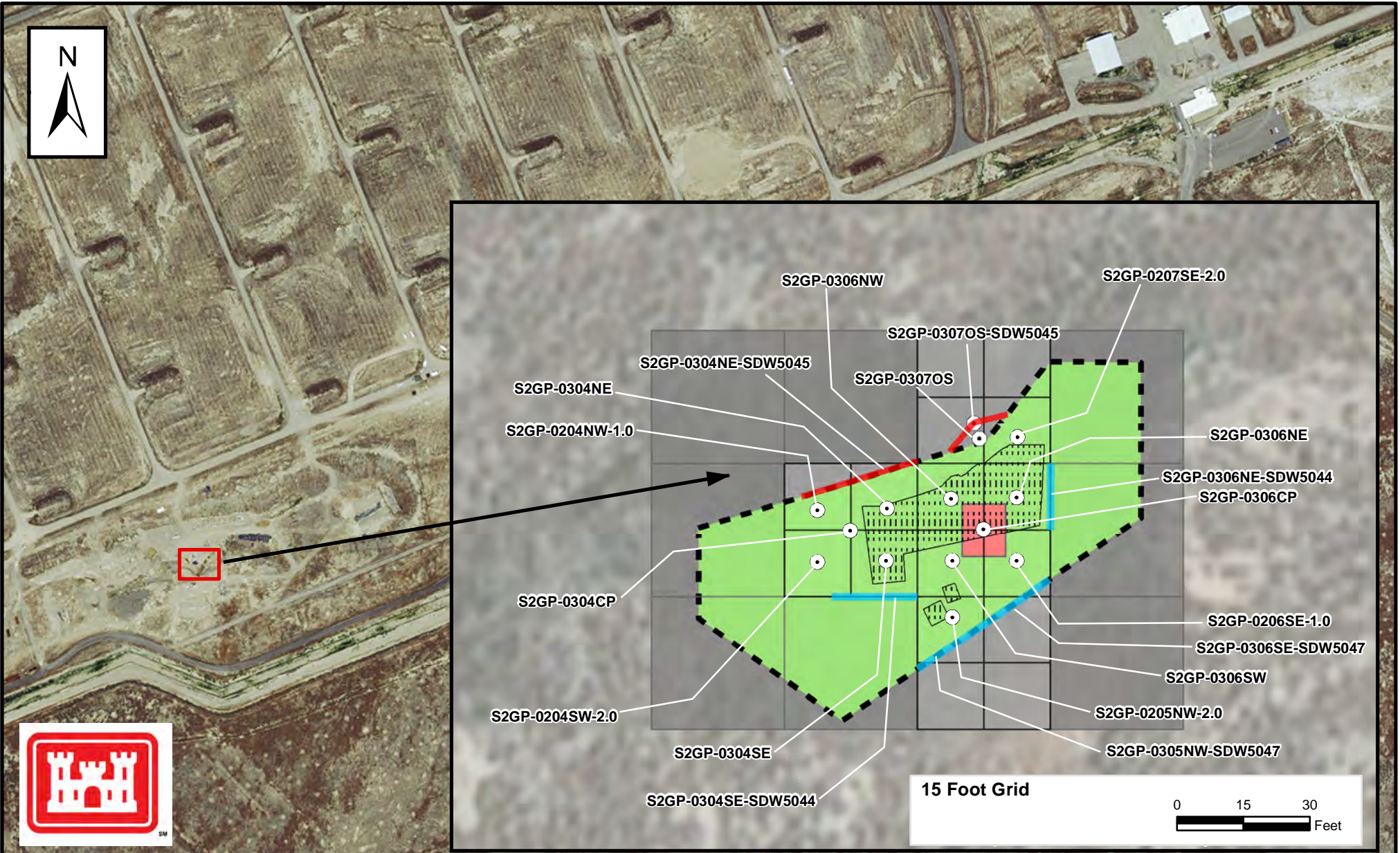
-  **30 foot Grid**
-  **Previously Characterized Less Than Project Criteria**
-  **Evaluated Using 15' Grid**
-  **Excavation Boundary**



30 Foot Grid



SWMU 2 Burial Pit
Summary of Confirmation Sample Results - 30' Grid
Tooele Army Depot - South
 Deseret Chemical Depot
 Stockton, Utah



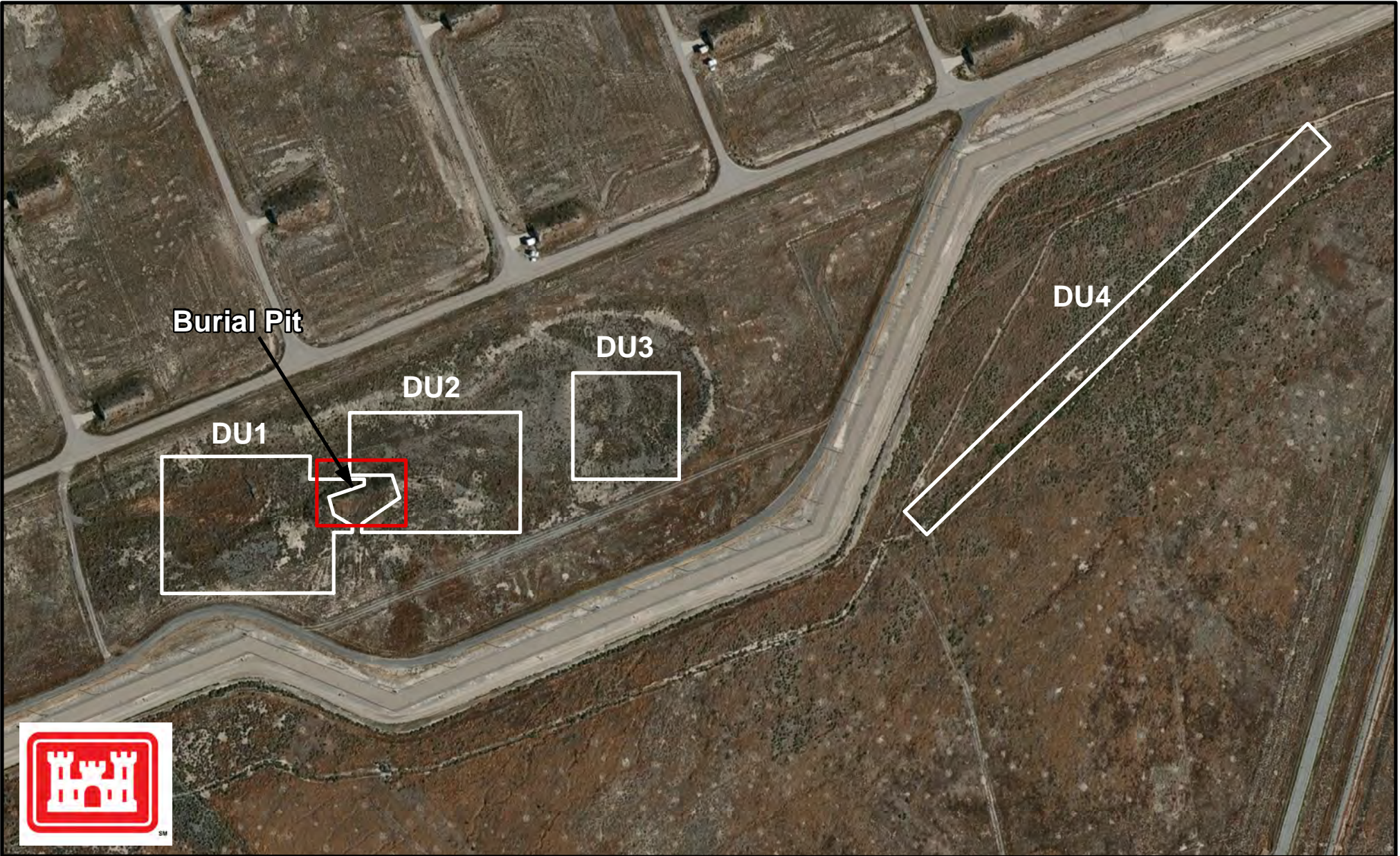
Project: 35DK2106
 Date: Dec 2015
 Revision: 1
 Prepared By: JP/PJL
 Checked By: PJL

Legend

- 15 foot Grid
- Discrete Sample Location
- 30 foot Grid
- Sidewall Sample Exceeds Project Criteria
- Previously Characterized Less Than Project Criteria
- Estimated Location of DM Sources
- Sidewall Sample Less Than Project Criteria
- Original Burial Pit Boundary
- Exceeds Project Criteria





SWMU 2 Burial Pit
 Summary of Confirmation Sample Results - 15' Grid
 Tooele Army Depot - South
 Deseret Chemical Depot
 Stockton, Utah



Project: 35DK2106
 Date: Dec 2015
 Revision: 1
 Prepared By: JP/PJL
 Checked By: PJL

Legend

-  SWMU 2 Burial Pit
-  Incremental Sampling Method Decision Units



Incremental Sampling Method – Decision Units
 Tooele Army Depot - South

Deseret Chemical Depot
 Stockton, Utah



Path: Y:\GIS\DCDI\Projects\35DK2106\A4990\ArcGIS\SWMU2_ISM_Decision_Units.mxd

Figure 5-5