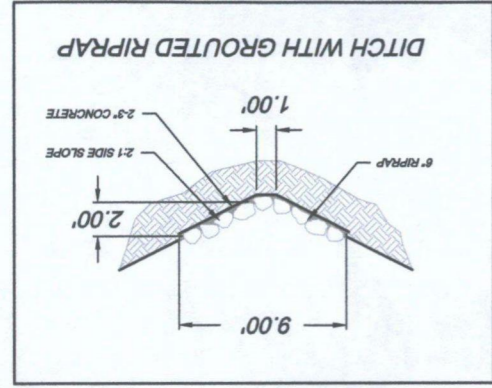
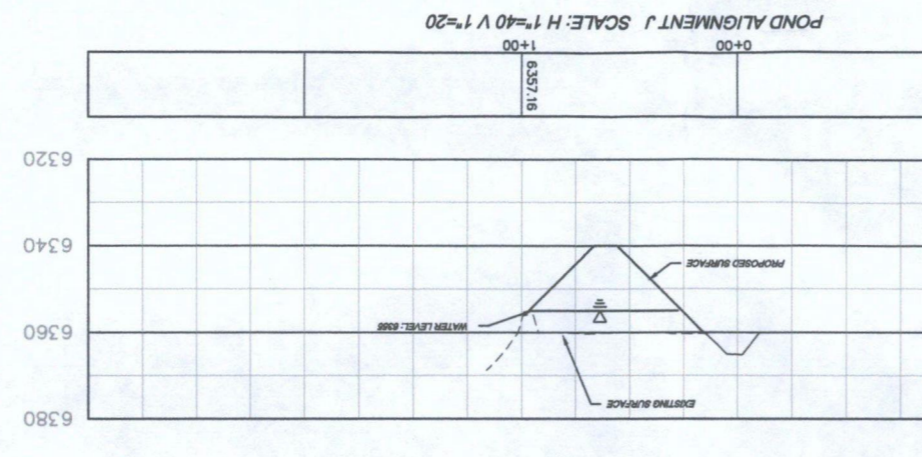
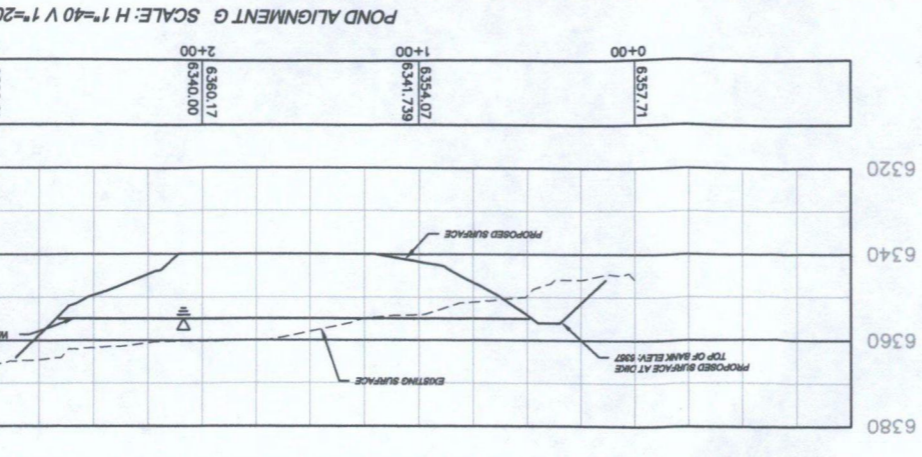
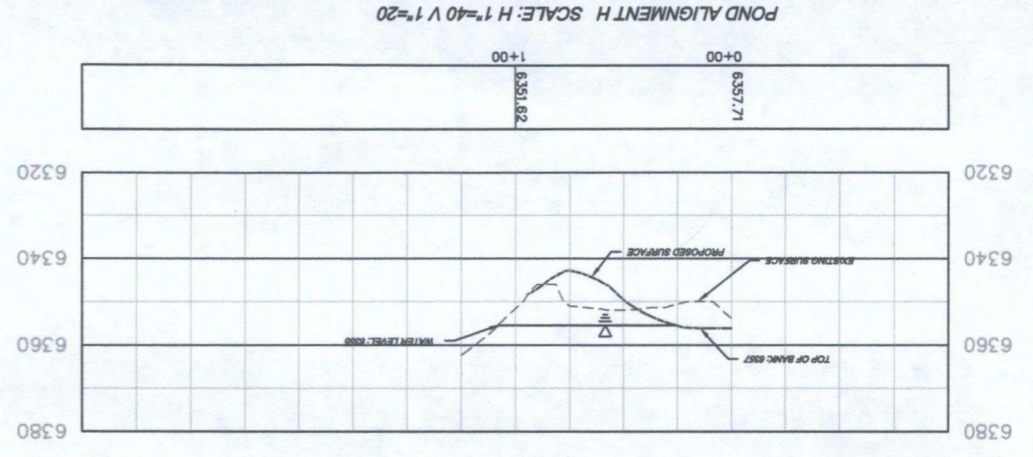
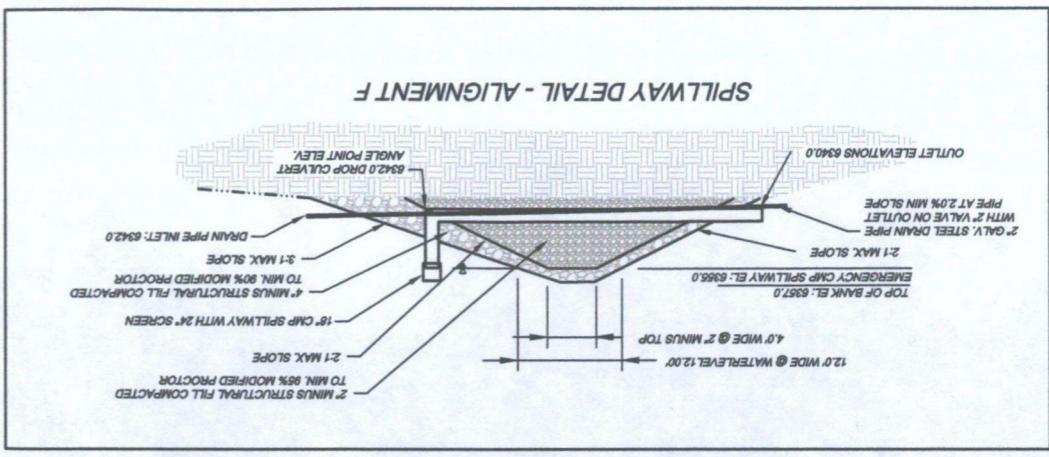


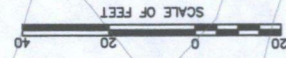
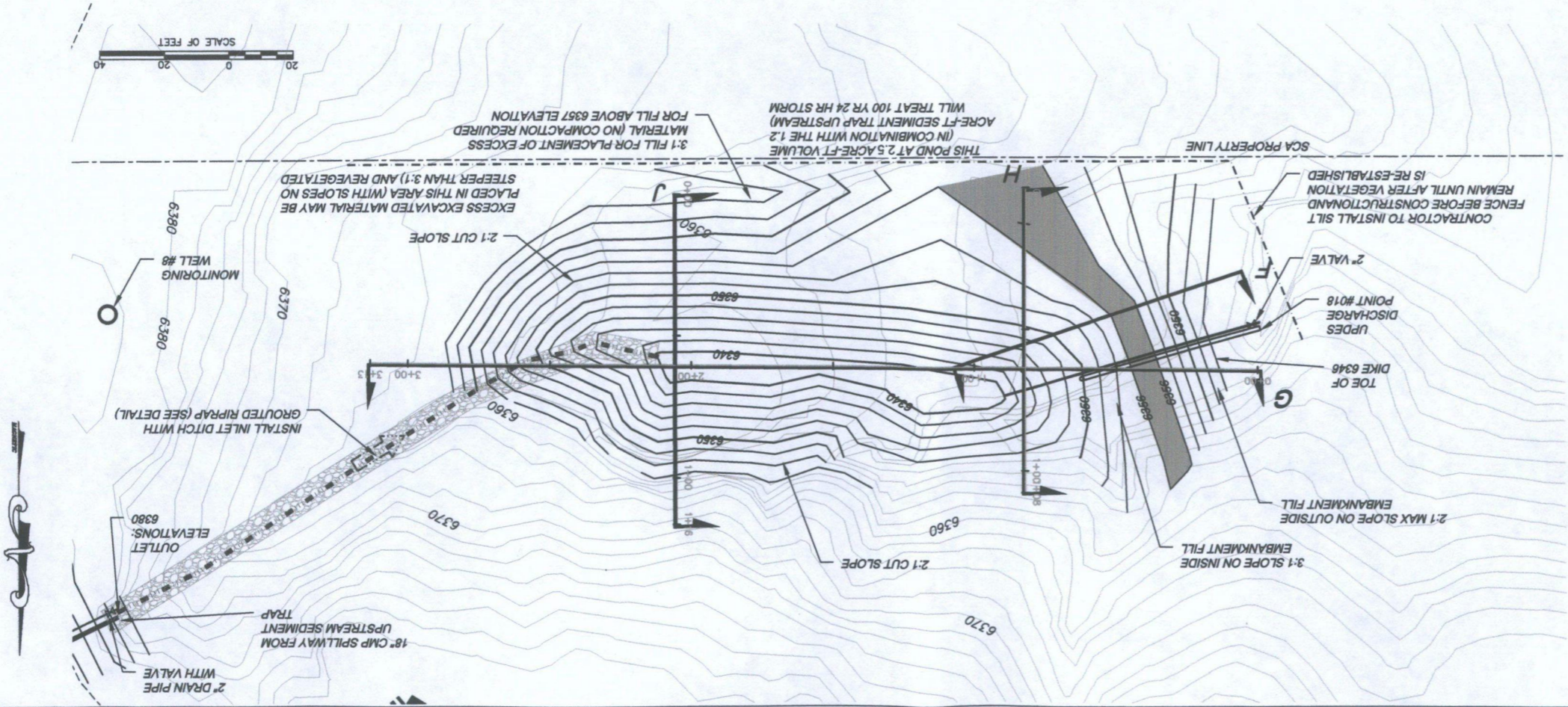
PLOTTED DATE: Wednesday, 10 November 2010 12:25pm



SEDIMENT POND #018 GENERAL

MINIMUM ELEVATION	-20.27'
MAXIMUM ELEVATION	10.12'
MEAN ELEVATION	-3.84'
BASE SURFACE	
EXISTING LOWER POND	
COMPARISON SURFACE	
CUT FACTOR	1.00
FILL FACTOR	1.00
CUT VOLUME (UNADJUSTED)	4950 CU. YD.
FILL VOLUME (UNADJUSTED)	1300 CU. YD.
NET VOLUME (UNADJUSTED)	3650 CU. YD. <CUT>

NOTE: CONTRACTOR TO INSTALL CLAY LINER IN POND TO ELEVATION 6356.0 (SEE DESIGN REPORT FOR LINER SPECIFICATIONS)



12
9
NOV 2012
TWIN PEAKS
Engineering & Land Surveying
2264 NORTH 1450 EAST LEHI, UTAH 84043

SUNNYSIDE COGENERATION ASSOC.
SCA #2 ASH LANDFILL GROUNDWATER PERMIT SUBMITTAL
SEDIMENT POND #018 DESIGN