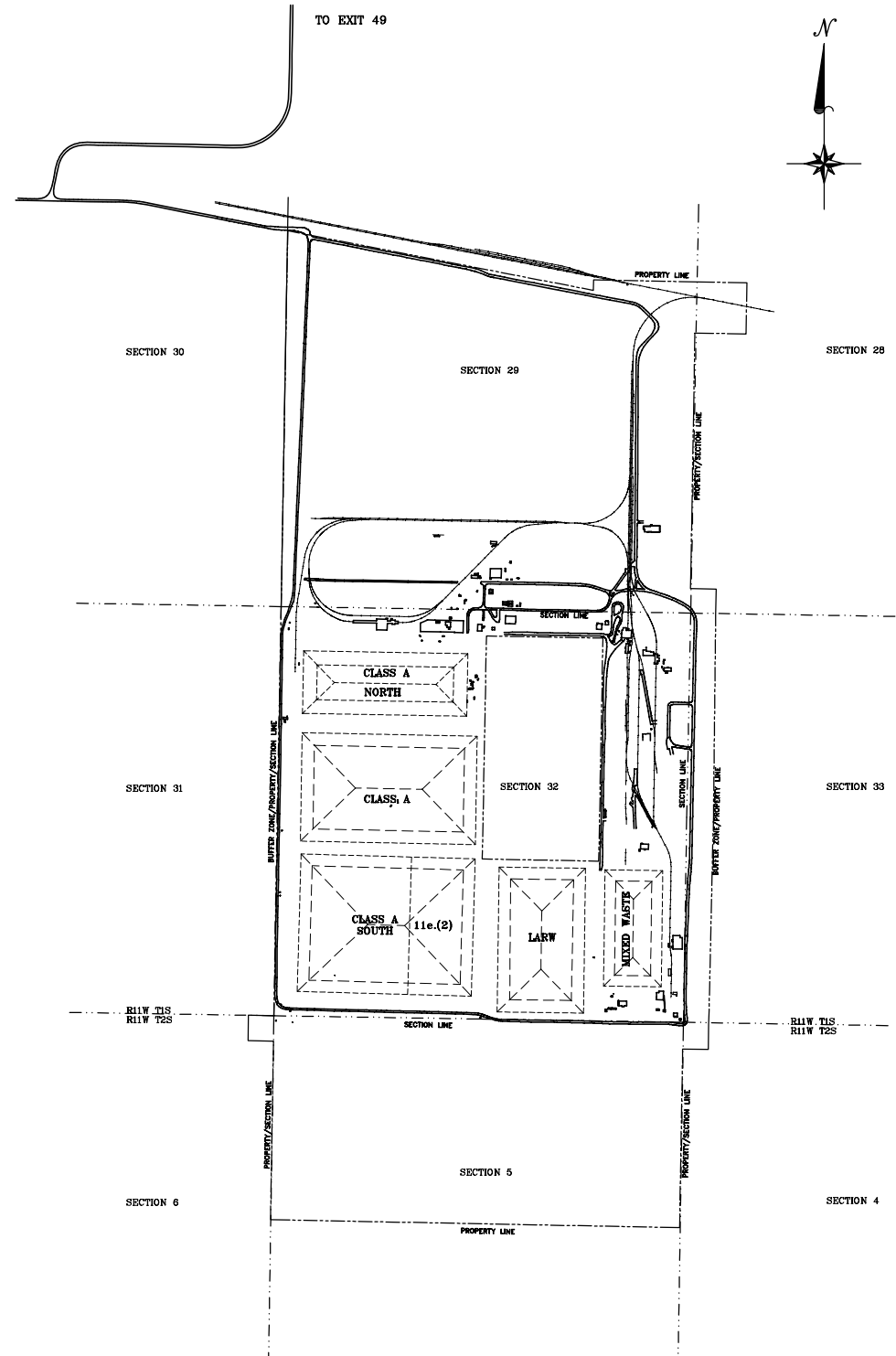


**ENERGYSOLUTIONS
LICENSE AMENDMENT REQUEST:
CLASS A SOUTH/11E.(2)
EMBANKMENT**

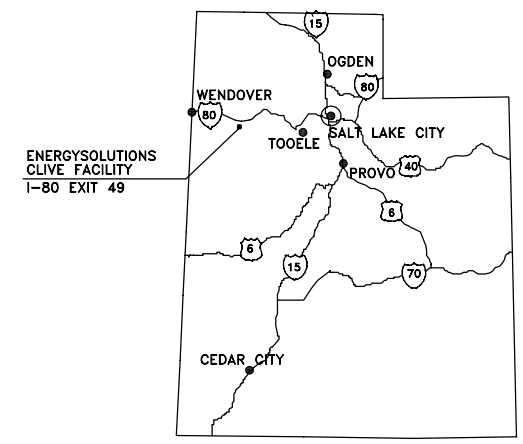
**REVISION 1
JUNE 9, 2009**

~~~~~



CLASS A SOUTH/11e.(2) DISPOSAL CELL

DWG. NO.	DESCRIPTION
07021-G1	PROJECT TITLE SHEET
07021-U1	DISPOSAL CELL BUFFER ZONE
07021-U2	DISPOSAL CELL WASTE LIMITS-LATITUDES & LONGITUDES
07021-U3	DISPOSAL CELL ENVIRONMENTAL MONITORING
07021-V1	CELL LAYOUT
07021-V2	CELL COVER LAYOUT
07021-V3	CELL CROSS SECTIONS 1 OF 2
07021-V4	CELL CROSS SECTIONS 2 OF 2
07021-V5	CELL CONSTRUCTION DETAILS 1 OF 2
07021-V6	CELL CONSTRUCTION DETAILS 2 OF 2
07021-V7	COVER CROSS SECTIONS AND GRADATIONS
07021-V8	COLLECTION LYSIMETERS DETAILS



UTAH
VICINITY MAP

DATE	1/4/08	ISSUED FOR PERMITTING
DATE		BY DESCRIPTION OF CHANGE

ENERGYSOLUTIONS
 CLIVE FACILITY
 CLASS A SOUTH/11e.(2) DISPOSAL CELL
 PROJECT TITLE SHEET
 CLIVE, UTAH

DRAWN BY	D. BOOTH
CHECKED BY	G. DUTSON
APPROVED BY	D. BOOTH
SCALE	AS NOTED
DATE	01/04/08
REV.	△

07021
G1

CL A SOUTH-NW
 N 12191.88
 E 10252.83
 N 40° 41' 13.587"
 W 113° 07' 25.832"

11e.(2)-NW
 N 12149.28
 E 11769.86
 N 40° 41' 13.446"
 W 113° 07' 06.136"

CL A SOUTH-NE
 N 12148.94
 E 11781.85
 N 40° 41' 13.445"
 W 113° 07' 05.980"

11e.(2)-NE
 N 12123.11
 E 12701.87
 N 40° 41' 13.359"
 W 113° 06' 54.037"

CL A SOUTH-SW
 N 10217.66
 E 10197.40
 N 40° 40' 54.077"
 W 113° 07' 26.070"

11e.(2)-SW
 N 10175.06
 E 11714.43
 N 40° 40' 53.936"
 W 113° 07' 06.378"

CL A SOUTH-SE
 N 10174.72
 E 11726.42
 N 40° 40' 53.935"
 W 113° 07' 06.222"

11e.(2)-SE
 N 10148.89
 E 12646.44
 N 40° 40' 53.849"
 W 113° 06' 54.279"

CLASS A SOUTH 11e.(2)

CLAY BARRIER
 (12' WIDE WALL)

LEGEND


- BUFFER ZONE LIMITS
- SECTION LINE
- PROPERTY LINE
- PERMITTED WASTE LIMITS
- DISPOSAL CELL BREAK LINES
- BUFFER ZONE

500 0 500 1000

NOTE:
 THE BUFFER ZONES FOR THE CLASS A SOUTH AND 11e.(2) EMBANKMENTS OVERLAP AT THE CLAY BARRIER WHICH SEPARATES THE TWO WASTE TYPES. THE BUFFER LIMITS CORRESPOND WITH THE EAST LIMITS OF THE BARRIER FOR THE CLASS A SOUTH AND WITH THE WEST LIMITS FOR THE 11e.(2).



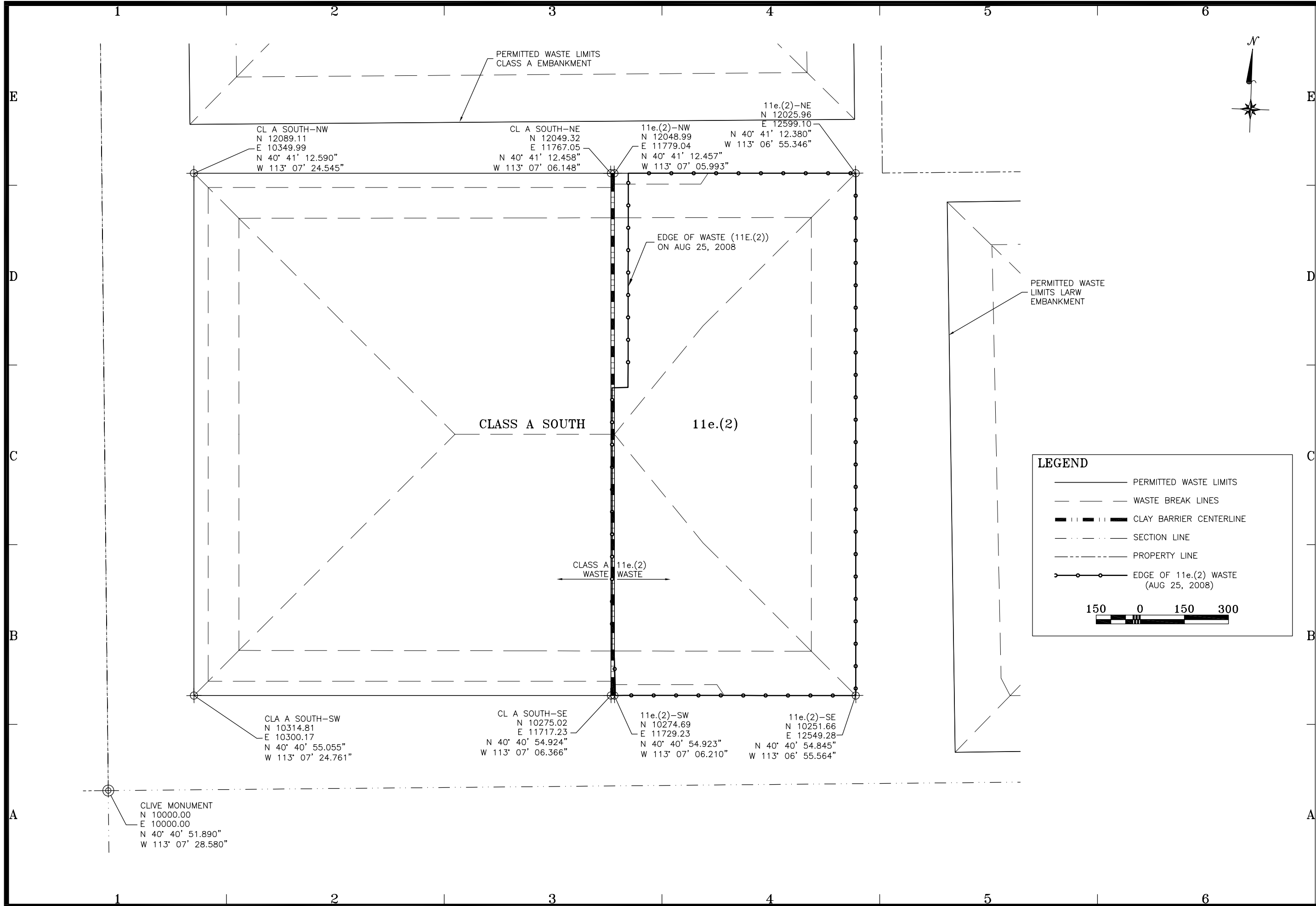
DATE	BY	DESCRIPTION OF CHANGE
6/9/09	DFB	INCREASED CLAY BARRIER THICKNESS & GW MONITORING
1/4/08	DFB	ISSUED FOR PERMITTING



CLIVE FACILITY
 CLASS A SOUTH/11e.(2) DISPOSAL CELL
 DISPOSAL CELL BUFFER ZONE
 CLIVE, UTAH

DRAFTED BY D. BOOTH CHECKED BY G. DUTSON APPROVED BY D. BOOTH	SCALE AS NOTED DATE 01/04/08 REV.
------------------------------------------------------------------------------	---------------------------------------------------

07021
 U1



CL A SOUTH-NW
 N 12089.11
 E 10349.99
 N 40° 41' 12.590"
 W 113° 07' 24.545"

CL A SOUTH-NE
 N 12049.32
 E 11767.05
 N 40° 41' 12.458"
 W 113° 07' 06.148"

11e.(2)-NW
 N 12048.99
 E 11779.04
 N 40° 41' 12.457"
 W 113° 07' 05.993"

11e.(2)-NE
 N 12025.96
 E 12599.10

N 40° 41' 12.380"
 W 113° 06' 55.346"

EDGE OF WASTE (11E.(2))
 ON AUG 25, 2008

PERMITTED WASTE LIMITS
 LARW
 EMBANKMENT

CLASS A SOUTH

11e.(2)

CLASS A 11e.(2)
 WASTE WASTE

LEGEND

- PERMITTED WASTE LIMITS
- - - WASTE BREAK LINES
- +—+—+— CLAY BARRIER CENTERLINE
- · · · · · SECTION LINE
- - - - - PROPERTY LINE
- ○ — ○ — ○ — EDGE OF 11e.(2) WASTE (AUG 25, 2008)



CLIVE MONUMENT
 N 10000.00
 E 10000.00
 N 40° 40' 51.890"
 W 113° 07' 28.580"

CLA A SOUTH-SW
 N 10314.81
 E 10300.17
 N 40° 40' 55.055"
 W 113° 07' 24.761"

CL A SOUTH-SE
 N 10275.02
 E 11717.23
 N 40° 40' 54.924"
 W 113° 07' 06.366"

11e.(2)-SW
 N 10274.69
 E 11729.23
 N 40° 40' 54.923"
 W 113° 07' 06.210"

11e.(2)-SE
 N 10251.66
 E 12549.28
 N 40° 40' 54.845"
 W 113° 06' 55.564"

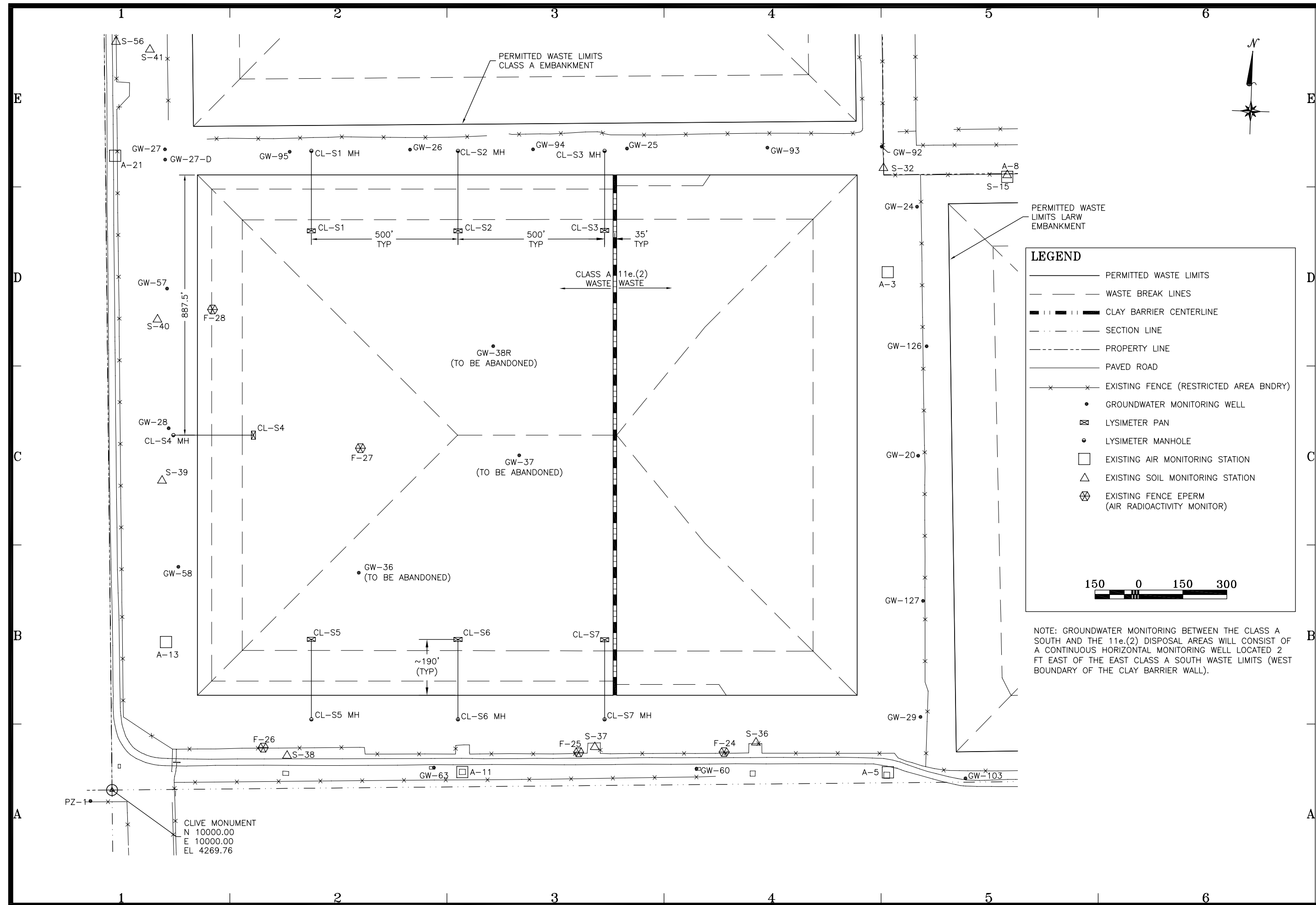


DATE	BY	DESCRIPTION OF CHANGE
6/9/09	DFB	INCREASED CLAY BARRIER THICKNESS & GW MONITORING
1/4/08	DFB	ISSUED FOR PERMITTING

ENERGYSOLUTIONS
 CLIVE FACILITY
 CLASS A SOUTH/11e.(2) DISPOSAL CELL
 DISPOSAL CELL WASTE LIMITS-LATITUDES & LONGITUDES
 CLIVE, UTAH

DRAFTED BY D. BOOTH
REVIEWED BY G. DUTSON
APPROVED BY D. BOOTH
SCALE AS SHOWN DATE 01/04/08 REV. Δ

07021
 U2



LEGEND

- PERMITTED WASTE LIMITS
- - - WASTE BREAK LINES
- +—+—+ CLAY BARRIER CENTERLINE
- · - · - SECTION LINE
- - - - - PROPERTY LINE
- PAVED ROAD
- × × × EXISTING FENCE (RESTRICTED AREA BNDRY)
- GROUNDWATER MONITORING WELL
- ⊠ LYSIMETER PAN
- LYSIMETER MANHOLE
- EXISTING AIR MONITORING STATION
- △ EXISTING SOIL MONITORING STATION
- ⊗ EXISTING FENCE EPERM (AIR RADIOACTIVITY MONITOR)

150 0 150 300

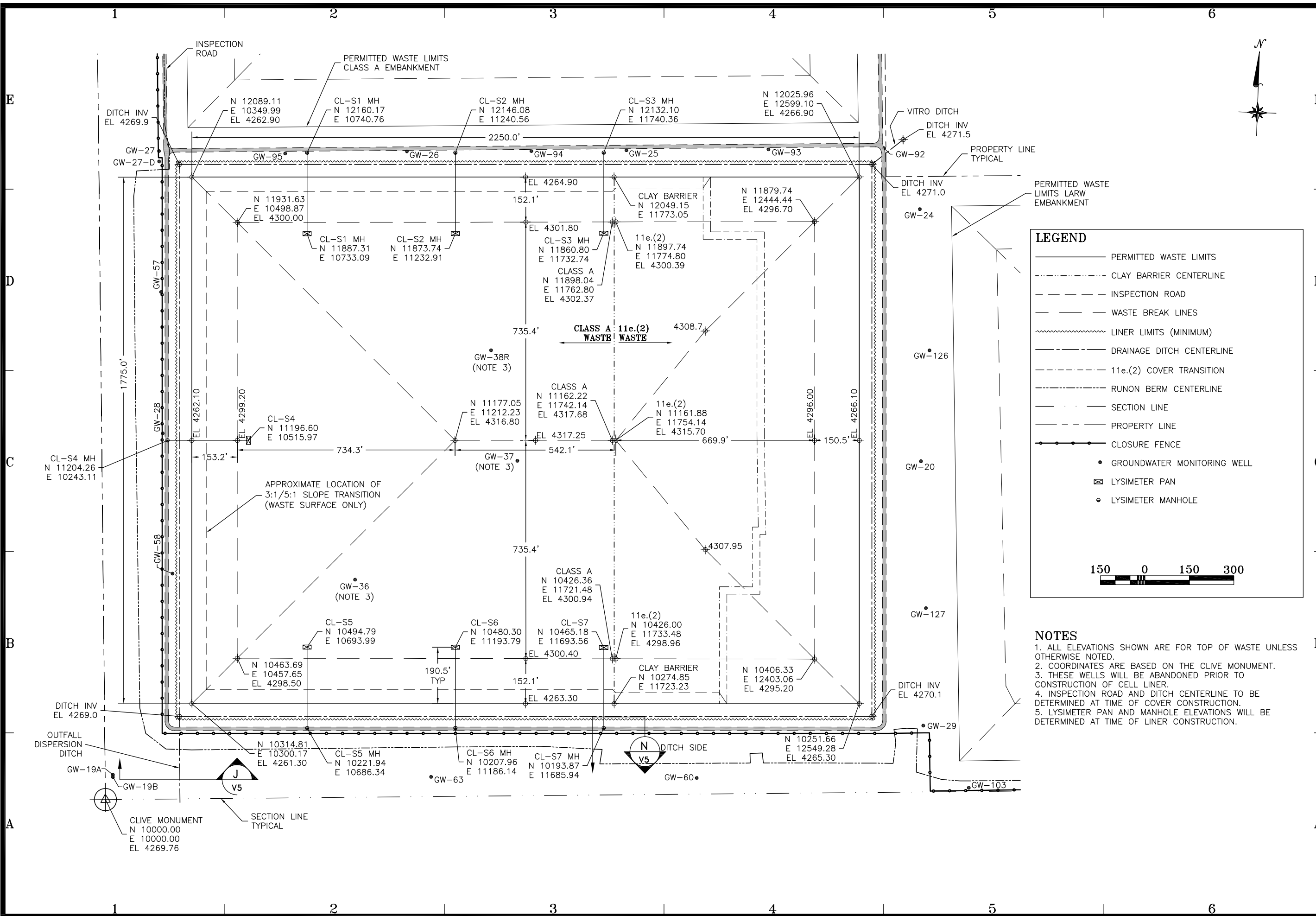
NOTE: GROUNDWATER MONITORING BETWEEN THE CLASS A SOUTH AND THE 11e.(2) DISPOSAL AREAS WILL CONSIST OF A CONTINUOUS HORIZONTAL MONITORING WELL LOCATED 2 FT EAST OF THE EAST CLASS A SOUTH WASTE LIMITS (WEST BOUNDARY OF THE CLAY BARRIER WALL).

CLIVE MONUMENT
 N 10000.00
 E 10000.00
 EL 4269.76

DATE	BY	DESCRIPTION OF CHANGE
6/9/09	DFB	INCREASED CLAY BARRIER THICKNESS & GW MONITORING
1/4/08	DFB	ISSUED FOR PERMITTING
1/4/08	DFB	ISSUED FOR PERMITTING

ENERGYSOLUTIONS
 CLIVE FACILITY
 CLASS A SOUTH/11e.(2) DISPOSAL CELL
 DISPOSAL CELL ENVIRONMENTAL MONITORING
 CLIVE, UTAH

DRAFTED BY D. BOOTH CHECKED BY G. DUTSON APPROVED BY D. BOOTH	SCALE AS SHOWN	DATE 01/04/08	REV. △
07021 U3			



LEGEND

- PERMITTED WASTE LIMITS
- CLAY BARRIER CENTERLINE
- - - - - INSPECTION ROAD
- - - - - WASTE BREAK LINES
- ~~~~~ LINER LIMITS (MINIMUM)
- - - - - DRAINAGE DITCH CENTERLINE
- 11e.(2) COVER TRANSITION
- - - - - RUNON BERM CENTERLINE
- SECTION LINE
- PROPERTY LINE
- +—+—+— CLOSURE FENCE
- GROUNDWATER MONITORING WELL
- ⊠ LYSIMETER PAN
- LYSIMETER MANHOLE

150 0 150 300

NOTES

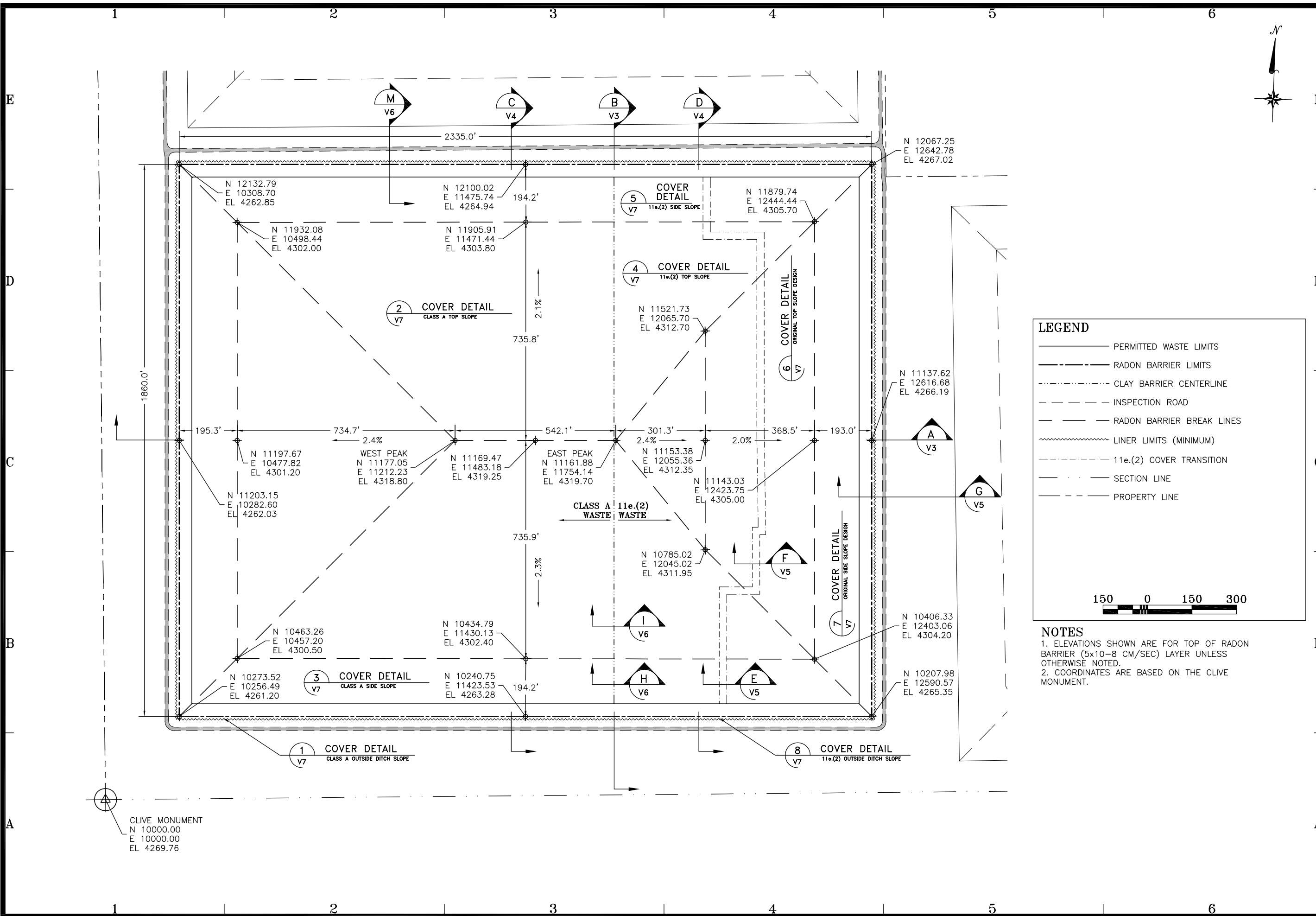
1. ALL ELEVATIONS SHOWN ARE FOR TOP OF WASTE UNLESS OTHERWISE NOTED.
2. COORDINATES ARE BASED ON THE CLIVE MONUMENT.
3. THESE WELLS WILL BE ABANDONED PRIOR TO CONSTRUCTION OF CELL LINER.
4. INSPECTION ROAD AND DITCH CENTERLINE TO BE DETERMINED AT TIME OF COVER CONSTRUCTION.
5. LYSIMETER PAN AND MANHOLE ELEVATIONS WILL BE DETERMINED AT TIME OF LINER CONSTRUCTION.

ENERGYSOLUTIONS

CLIVE FACILITY
CLASS A SOUTH/11e.(2) DISPOSAL CELL
CELL LAYOUT
CLIVE, UTAH

DATE	BY	DESCRIPTION OF CHANGE
6/9/09	DFB	INCREASED CLAY BARRIER THICKNESS & GW MONITORING
1/4/08	DFB	ISSUED FOR PERMITTING

DRAWN BY: D. BOOTH
 CHECKED BY: G. DUTSON
 APPROVED BY: D. BOOTH
 SCALE: AS NOTED DATE: 01/04/08 INV. NO. 07021 V1



LEGEND

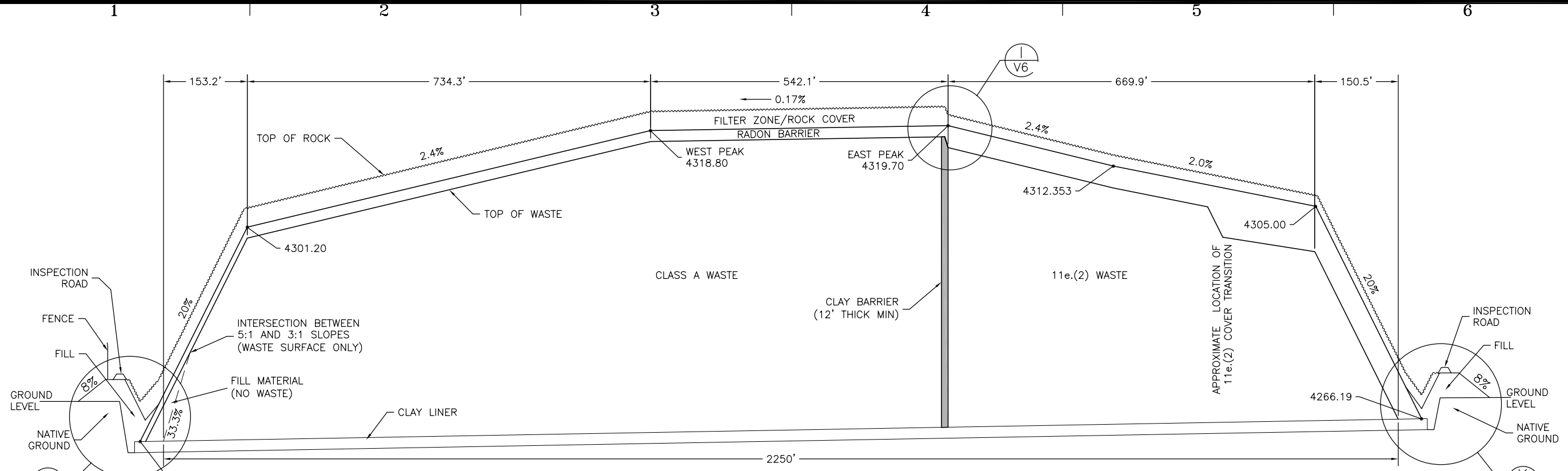
- PERMITTED WASTE LIMITS
- RADON BARRIER LIMITS
- - - - - CLAY BARRIER CENTERLINE
- - - - - INSPECTION ROAD
- - - - - RADON BARRIER BREAK LINES
- ~~~~~ LINER LIMITS (MINIMUM)
- - - - - 11e.(2) COVER TRANSITION
- - - - - SECTION LINE
- - - - - PROPERTY LINE

150 0 150 300

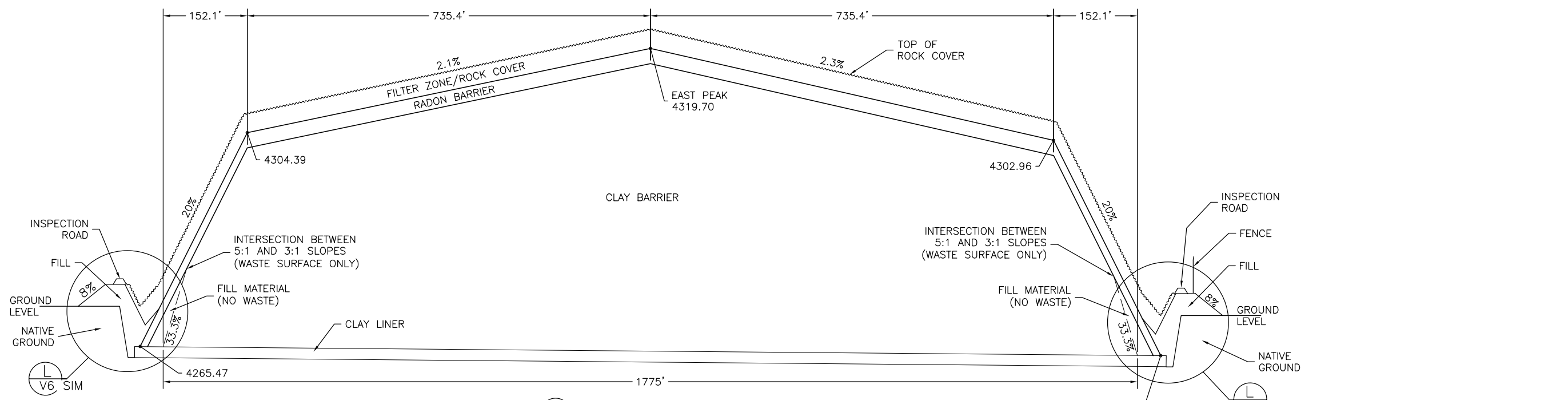
NOTES

- ELEVATIONS SHOWN ARE FOR TOP OF RADON BARRIER (5x10-8 CM/SEC) LAYER UNLESS OTHERWISE NOTED.
- COORDINATES ARE BASED ON THE CLIVE MONUMENT.

<p>CLIVE FACILITY CLASS A SOUTH/11e.(2) DISPOSAL CELL CELL COVER LAYOUT CLIVE, UTAH</p>	<table border="1" style="width: 100%; border-collapse: collapse;"> <tr> <td style="width: 33%;">DATE</td> <td style="width: 33%;">BY</td> <td style="width: 33%;">DESCRIPTION OF CHANGE</td> </tr> <tr> <td>6/9/09</td> <td>DFB</td> <td>INCREASED CLAY BARRIER THICKNESS & GW MONITORING</td> </tr> <tr> <td>1/4/08</td> <td>DFB</td> <td>ISSUED FOR PERMITTING</td> </tr> </table>	DATE	BY	DESCRIPTION OF CHANGE	6/9/09	DFB	INCREASED CLAY BARRIER THICKNESS & GW MONITORING	1/4/08	DFB	ISSUED FOR PERMITTING
DATE	BY	DESCRIPTION OF CHANGE								
6/9/09	DFB	INCREASED CLAY BARRIER THICKNESS & GW MONITORING								
1/4/08	DFB	ISSUED FOR PERMITTING								
<p>DRAWN BY D. BOOTH</p> <p>REVIEWED BY G. DUTSON</p> <p>APPROVED BY D. BOOTH</p> <p>SCALE AS NOTED</p> <p>DATE 01/04/08</p> <p>REV. A</p>	<p>07021 V2</p>									



A WEST-EAST CROSS SECTION
 V2 HORIZONTAL SCALE: 1" = 200'
 VERTICAL SCALE: 1" = 20'

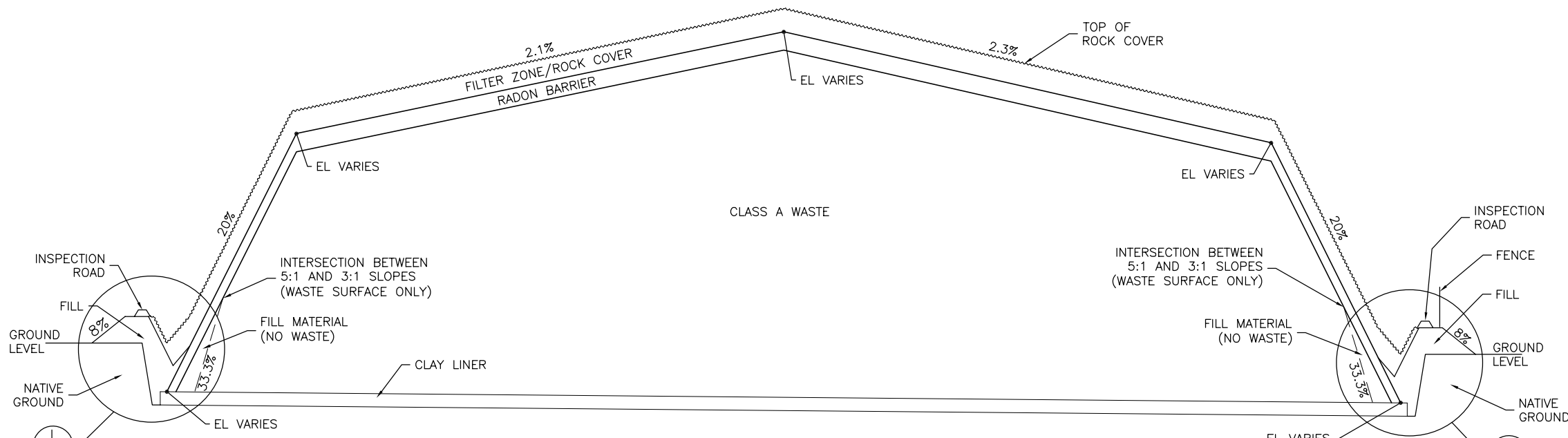


B NORTH-SOUTH CROSS SECTION
 V2 HORIZONTAL SCALE: 1" = 200'
 VERTICAL SCALE: 1" = 20'

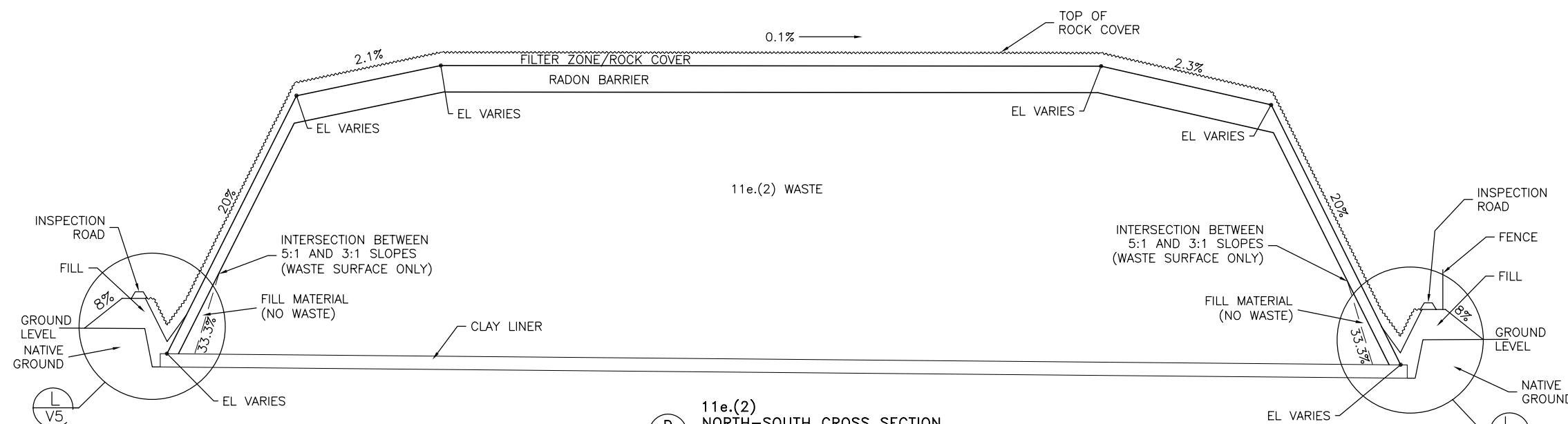
DATE	BY	DESCRIPTION OF CHANGE
6/9/09	DFB	INCREASED CLAY BARRIER THICKNESS & GW MONITORING
1/4/08	DFB	ISSUED FOR PERMITTING

ENERGYSOLUTIONS
 CLIVE FACILITY
 CLASS A SOUTH/11e.(2) DISPOSAL CELL
 CELL CROSS SECTIONS 1 OF 2
 CLIVE, UTAH

DRAWN BY	D. BOOTH
REVIEWED BY	G. DUTSON
APPROVED BY	D. BOOTH
SCALE	NTS
DATE	01/04/08
REV.	Δ
DRAWING NO.	07021 V3



**CLASS A SOUTH
NORTH-SOUTH CROSS SECTION**
 HORIZONTAL SCALE: 1" = 200'
 VERTICAL SCALE: 1" = 20'

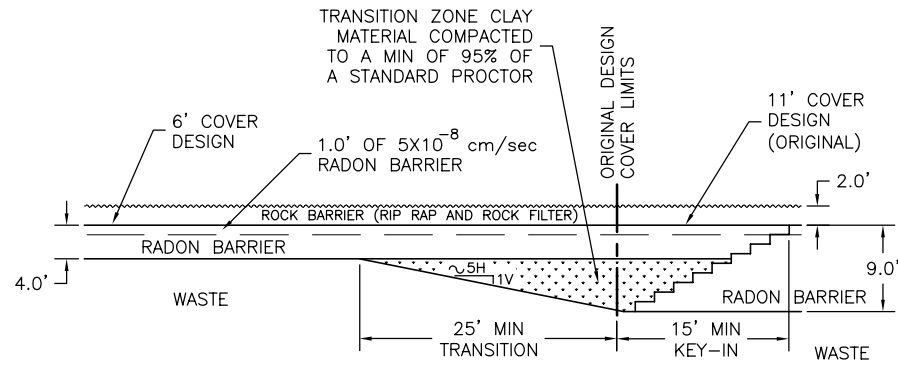


**11e.(2)
NORTH-SOUTH CROSS SECTION**
 HORIZONTAL SCALE: 1" = 200'
 VERTICAL SCALE: 1" = 20'

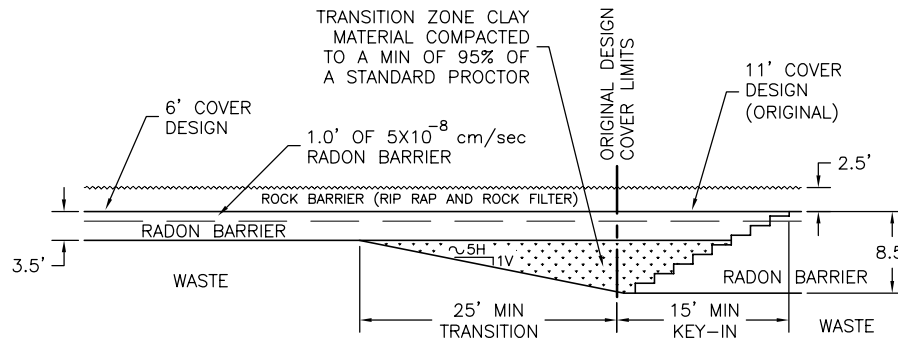
DATE	1/4/08	BY	DFB	ISSUED FOR	PERMITTING
DATE		BY		DESCRIPTION OF	CHANGE

ENERGYSOLUTIONS
 CLIVE FACILITY
 CLASS A SOUTH/11e.(2) DISPOSAL CELL
 CELL CROSS SECTIONS 2 OF 2
 CLIVE, UTAH

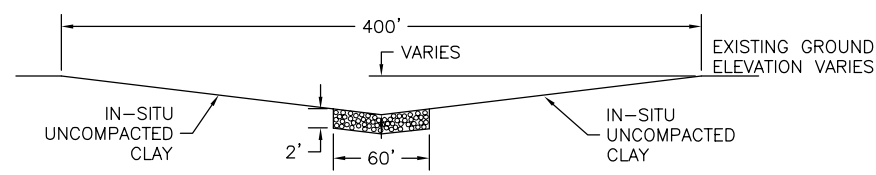
DRAWN BY	D. BOOTH
REVIEWED BY	G. DUTSON
APPROVED BY	D. BOOTH
SCALE	NTS
DATE	01/04/08
REV.	Δ
DRAWING NO.	07021 V4



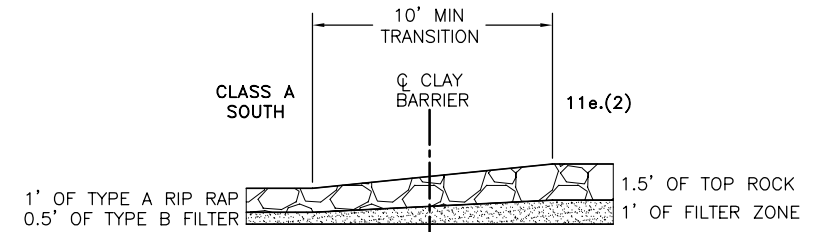
11e.(2) TOP SLOPE COVER TRANSITION
 F V2 NOT TO SCALE



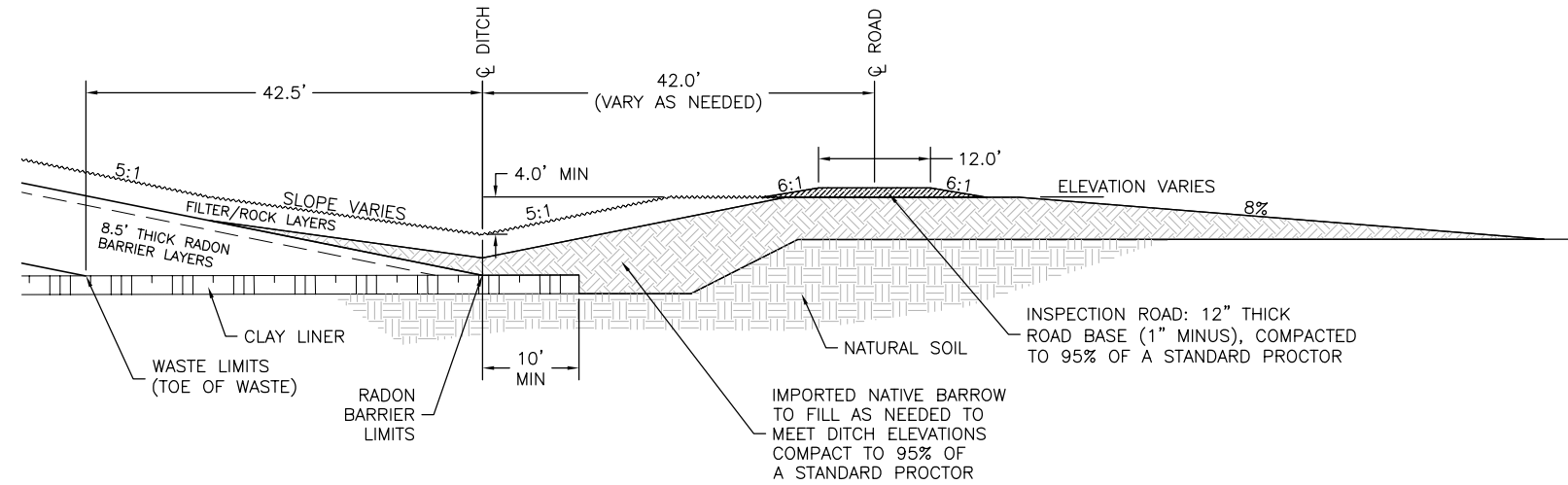
11e.(2) SIDE SLOPE COVER TRANSITION
 E V2 NOT TO SCALE



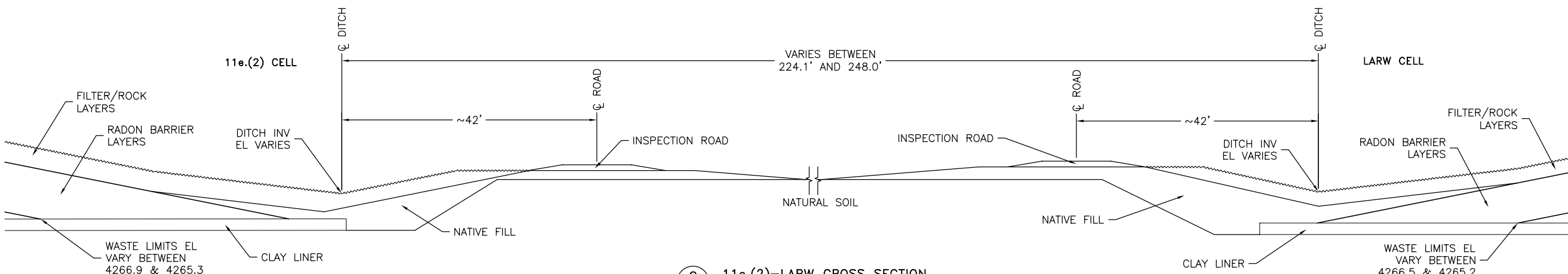
J DISPERSION DITCH CROSS SECTION
 HORIZONTAL SCALE: 1" = 120'
 VERTICAL SCALE: 1" = 20'



N V1 DITCH SIDE SLOPE TRANSITION OUTSIDE OF CENTERLINE
 HORIZONTAL SCALE: 1" = 8'



K ORIGINAL DITCH CROSS SECTION
 V3
 10 0 10 20



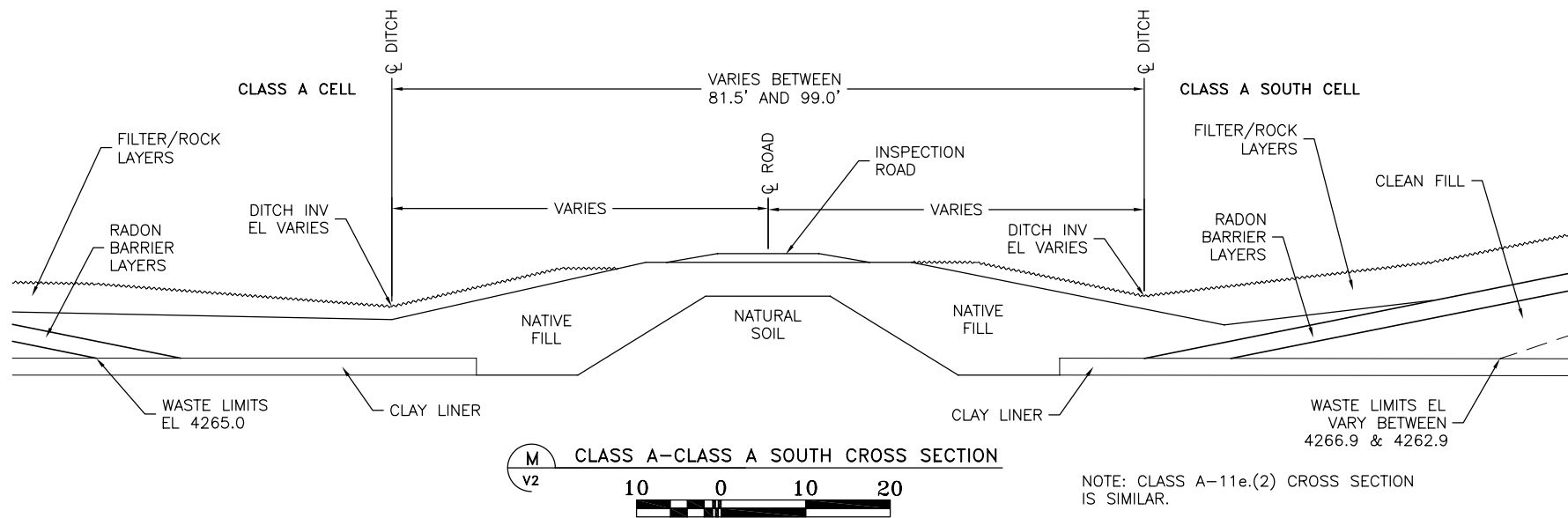
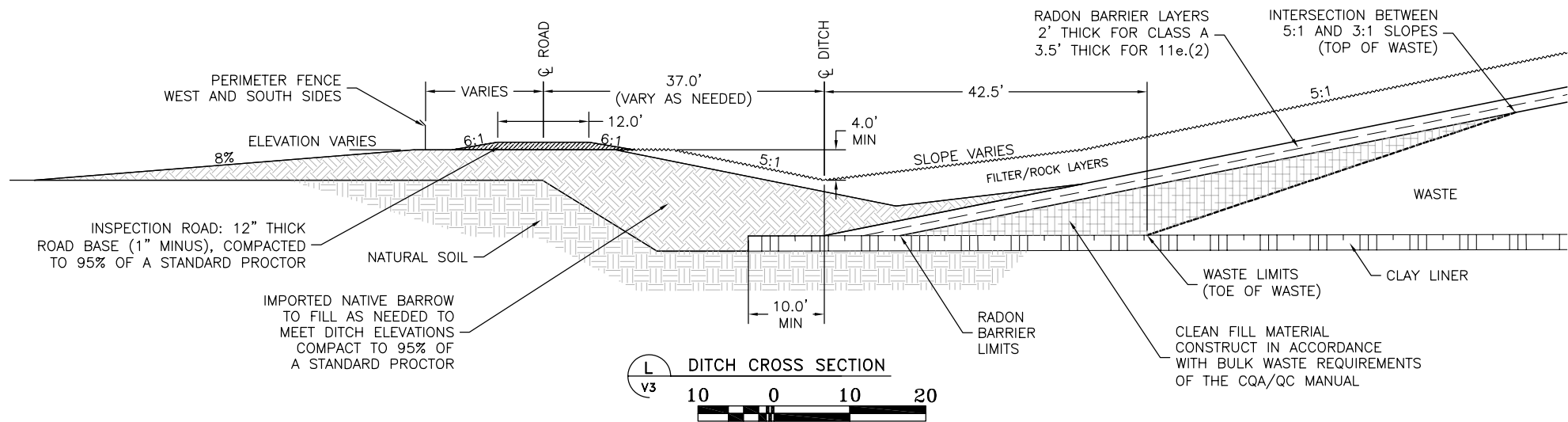
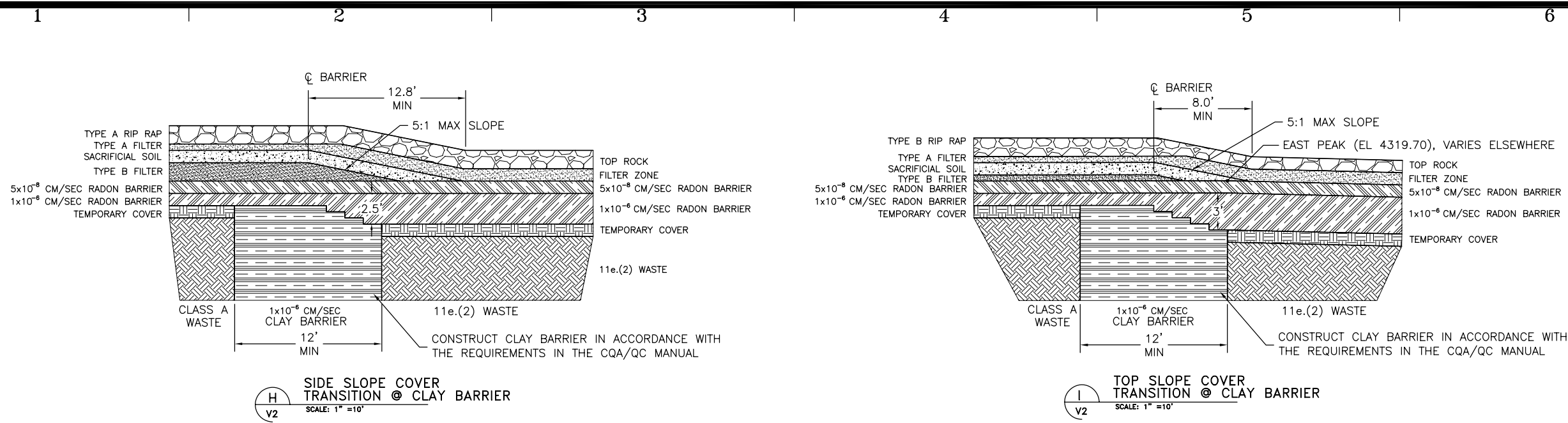
G 11e.(2)-LARW CROSS SECTION
 V2
 10 0 10 20

DATE	1/4/08	ISSUED FOR PERMITTING
BY		DESCRIPTION OF CHANGE

ENERGYSOLUTIONS
 CLIVE FACILITY
 CLASS A SOUTH/11e.(2) DISPOSAL CELL
 CELL CONSTRUCTION DETAILS 1 OF 2
 CLIVE, UTAH

DRAWN BY	D. BOOTH
REVIEWED BY	G. DUTSON
APPROVED BY	D. BOOTH
SCALE	NTS
DATE	01/04/08
REV.	

07021
 V5



DATE	BY	DESCRIPTION OF CHANGE
6/9/09	DFB	INCREASED CLAY BARRIER THICKNESS
1/4/08	DFB	ISSUED FOR PERMITTING

ENERGYSOLUTIONS

CLIVE FACILITY
CLASS A SOUTH/11e.(2) DISPOSAL CELL
CELL CONSTRUCTION DETAILS 2 OF 2
CLIVE, UTAH

DRAWN BY	D. BOOTH
REVIEWED BY	G. DUTSON
APPROVED BY	D. BOOTH
SCALE	NTS
DATE	01/04/08
REV.	1

07021
V6

11e.(2) COVER DESIGNS

ROCK
12" THICK TOP ROCK
12" THICK FILTER ZONE
12" OF 5 X 10⁻⁸ CM/SEC RADON BARRIER

CLAY
3' OF 1 X 10⁻⁶ CM/SEC RADON BARRIER

4 11e.(2) TOP SLOPES
V2

ROCK
12" THICK TOP ROCK
12" THICK FILTER ZONE
12" OF 5 X 10⁻⁸ CM/SEC RADON BARRIER

CLAY
8' OF 1 X 10⁻⁶ CM/SEC RADON BARRIER

6 11e.(2) TOP SLOPES
V2 ORIGINAL DESIGN

ROCK
18" THICK SIDE ROCK
12" THICK FILTER ZONE
NATURAL GROUND OR IMPORTED NATIVE BARROW MATERIAL

8 PERIMETER DITCH
V2 OUTSIDE SLOPE ONLY

ROCK
18" THICK SIDE ROCK
12" THICK FILTER ZONE
12" OF 5 X 10⁻⁸ CM/SEC RADON BARRIER

CLAY
2.5' OF 1 X 10⁻⁶ CM/SEC RADON BARRIER

5 11e.(2) SIDE SLOPES
V2

ROCK
18" THICK SIDE ROCK
12" THICK FILTER ZONE
12" OF 5 X 10⁻⁸ CM/SEC RADON BARRIER

CLAY
7.5' OF 1 X 10⁻⁶ CM/SEC RADON BARRIER

7 11e.(2) SIDE SLOPES
V2 ORIGINAL DESIGN

GRADATIONS - ASTM C-136

TOP ROCK
D₁₀₀ 2-1/2 TO 4-1/2 INCHES
D₅₀ 1-1/8 TO 3 INCHES
D₁₅ 3/4 TO 1-1/2 INCHES

SIDE ROCK
D₁₀₀ 12 TO 16 INCHES
D₉₅ 8 TO 12 INCHES
D₅₀ 4-1/2 TO 8 INCHES
D₁₅ 2 TO 4 INCHES

FILTER ZONE
D₁₀₀ = 1.5 TO 3.0 INCHES
D₈₅ = 1.0 TO 2.5 INCHES
D₅₀ = 0.75 TO 2.0 INCHES
D₁₅ = 0.3.125 TO 0.625 INCHES
D₁₀ >= #10 SIEVE (2.0 mm)
D₅ >= #200 SIEVE (0.074 mm)

CLASS A SOUTH COVER DESIGNS

12" THICK TYPE A RIP RAP
6" THICK TYPE A FILTER ZONE
NATURAL GROUND OR IMPORTED NATIVE BARROW MATERIAL

1 PERIMETER DITCH
V2 OUTSIDE SLOPE ONLY

ROCK
18" THICK TYPE B RIP RAP
6" THICK TYPE A FILTER ZONE
12" THICK SACRIFICIAL SOIL
6" THICK TYPE B FILTER ZONE

CLAY
12" OF 5 X 10⁻⁸ CM/SEC RADON BARRIER
12" OF 1 X 10⁻⁶ CM/SEC RADON BARRIER

2 CLASS A SOUTH TOP SLOPES
V2

ROCK
18" THICK TYPE A RIP RAP
6" THICK TYPE A FILTER ZONE
12" THICK SACRIFICIAL SOIL

ROCK
18" THICK TYPE B FILTER ZONE

CLAY
12" OF 5 X 10⁻⁸ CM/SEC RADON BARRIER
12" OF 1 X 10⁻⁶ CM/SEC RADON BARRIER

3 CLASS A SOUTH SIDE SLOPES
V2

GRADATIONS - ASTM C-136

TYPE A RIP RAP
D₁₀₀ <= 16 INCH
D₉₀ <= 12 INCH
D₅₀ >= 4-1/2 INCH
D₁₀ >= 2 INCH
D₅ >= NO. 200 SIEVE

TYPE B RIP RAP
D₁₀₀ <= 4-1/2 INCH
D₅₀ >= 1-1/4 INCH
D₁₀ >= 3/4 INCH
D₅ >= NO. 200 SIEVE

TYPE A FILTER ZONE
D₁₀₀ <= 6 INCH
D₇₀ <= 3 INCH
D₅₀ <= 1.57 INCH (40 mm)
D₁₅ <= .85 INCH (22 mm)
D₁₀ >= NO. 10 SIEVE (2mm)
D₅ >= NO. 200 SIEVE


TYPE B FILTER & SACRIFICIAL SOIL
TYPE B FILTER & SACRIFICIAL SOIL MATERIAL GRADATIONS ARE DETERMINED BY THE FOLLOWING SPECIFICATION:

D₁₅ (MAX) FILTER
D₈₅ (MIN) SOIL MUST BE < 5

D₅₀ (MAX) FILTER
D₅₀ (MIN) SOIL MUST BE ≤ 25

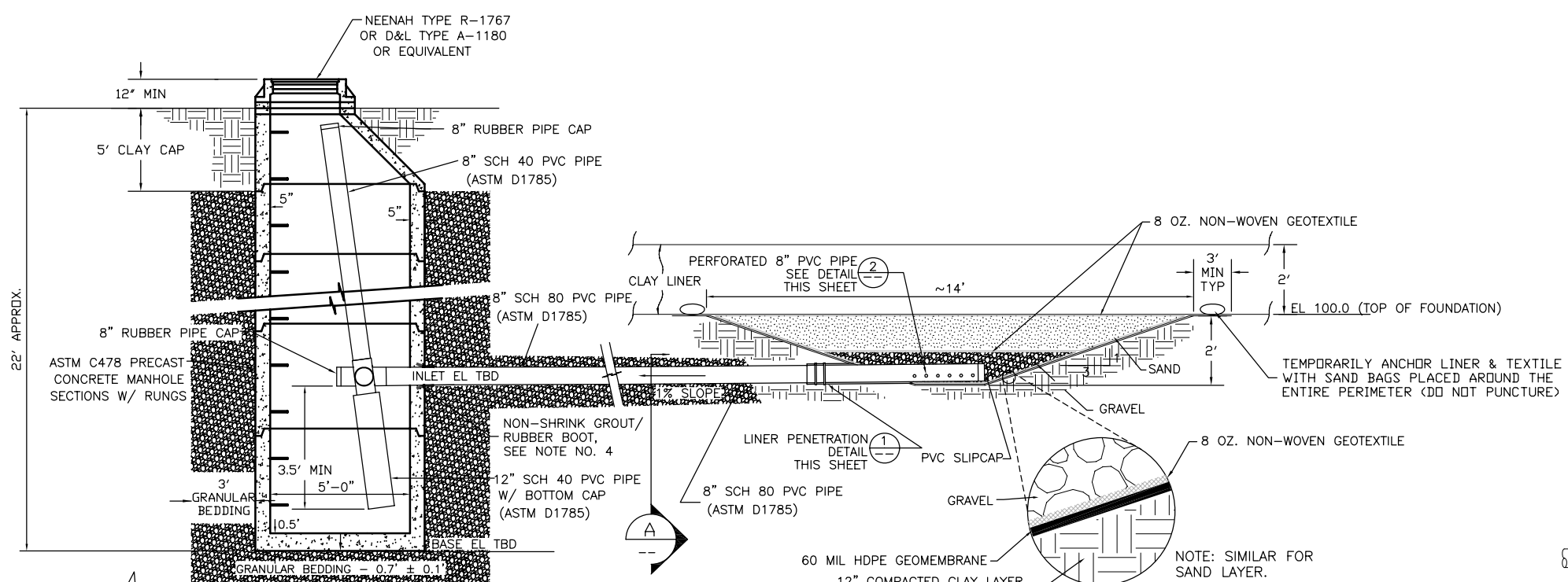
TYPE B FILTER MIN PERMEABILITY = 3.5 cm/sec
SACRIFICIAL SOIL MIN MOISTURE @ 15 atm = 3.5%

DATE	BY	DESCRIPTION OF CHANGE
1/4/08	DFB	ISSUED FOR PERMITTING



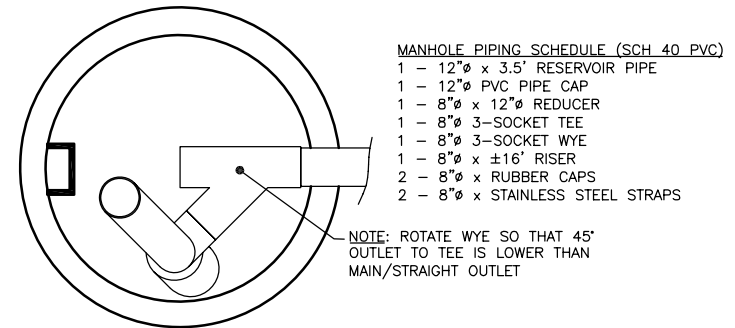
CLIVE FACILITY
CLASS A SOUTH/11e.(2) DISPOSAL CELL
COVER CROSS SECTIONS AND GRADATIONS
CLIVE, UTAH

DESIGNED BY	D. BOOTH
CHECKED BY	G. DUTSON
APPROVED BY	D. BOOTH
SCALE	NTS
DATE	01/04/08
REV.	Δ
DRAWING NO.	07021 V7



- NOTES:**
1. THE MANHOLE EXCAVATION SHALL EXTEND 0.9 ± 0.2-FOOT BELOW THE BOTTOM OF THE MANHOLE.
 2. BACKFILL AROUND THE LOWER MANHOLE SECTIONS AND LYSIMETER PIPE SHALL CONSIST OF GRANULAR BEDDING MATERIAL. A 3 FOOT COLUMN OF GRANULAR BEDDING AROUND THE MANHOLE SHALL EXTEND TO A LEVEL GREATER THAN OR EQUAL TO 5- FEET BELOW FINAL GRADE. THE FINAL 5 FEET OF BACKFILL SHALL BE CLAY PLACED IN 1.0 ± 0.1 FOOT THICK LOOSE LIFTS COMPACTED TO ≥90% OF A STANDARD PROCTOR.
 3. GRANULAR BEDDING MATERIAL SHALL BE USED TO BACKFILL THE PIPE TRENCH TO A MINIMUM OF 0.5-FOOT ABOVE THE PIPE. THE REMAINING TRENCH BACKFILL MAY CONSIST OF GRANULAR BEDDING MATERIAL OR NATIVE SOIL PLACED IN 1.0 ± 0.2 FOOT THICK LOOSE LIFTS COMPACTED TO ≥90% OF THE STANDARD PROCTOR. IF GRANULAR BEDDING IS USED AS TRENCH BACKFILL, THE FINAL 1.0 ± 0.2-FOOT THICK LIFT SHALL CONSIST OF NATIVE SOILS.
 4. SEAL PIPE PENETRATION ON MANHOLE SECTION ON THE INSIDE AND OUTSIDE WITH A RUBBER BOOT AND SS STRAP AND/OR NON-SHRINK GROUT. SEAL OUTSIDE OF AT LEAST THE LOWEST SUMP SECTION AND BASE WITH BLACK MASTIC PRIOR TO INSTALLATION TO WATERPROOF. SEAL ALL MANHOLE SECTION'S JOINTS.
 5. INLET AND BASE ELEVATIONS TO BE DETERMINED FOR EACH LYSIMETER AND PRESENTED IN A SEPARATE DRAWING(S).
 6. SEE ALL MATERIALS GRADATIONS IN THE CQA PLAN.

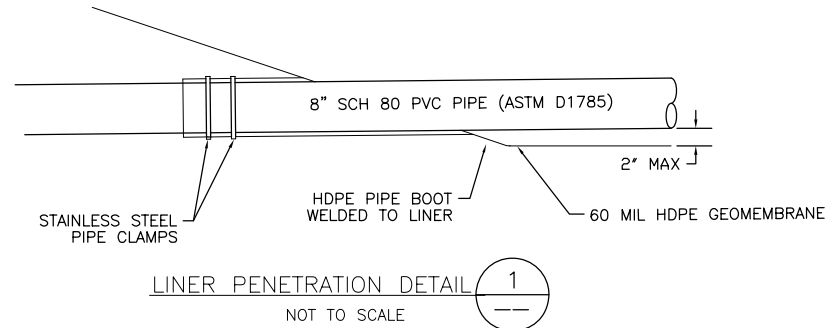
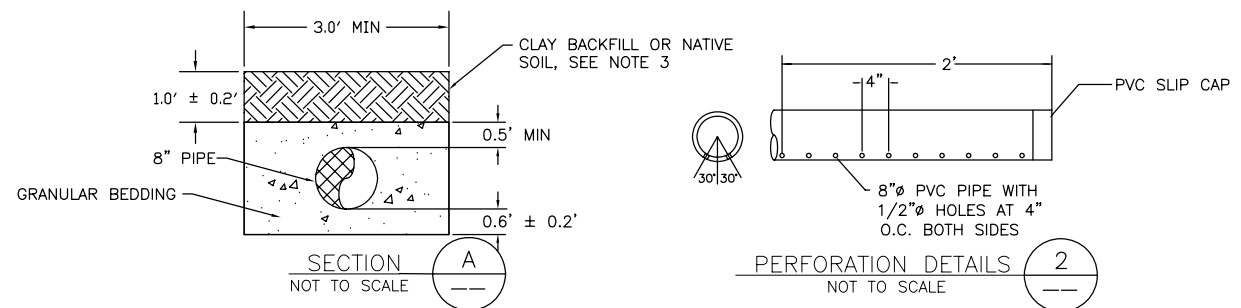
MANHOLE AND PIPING DETAIL
NOT TO SCALE



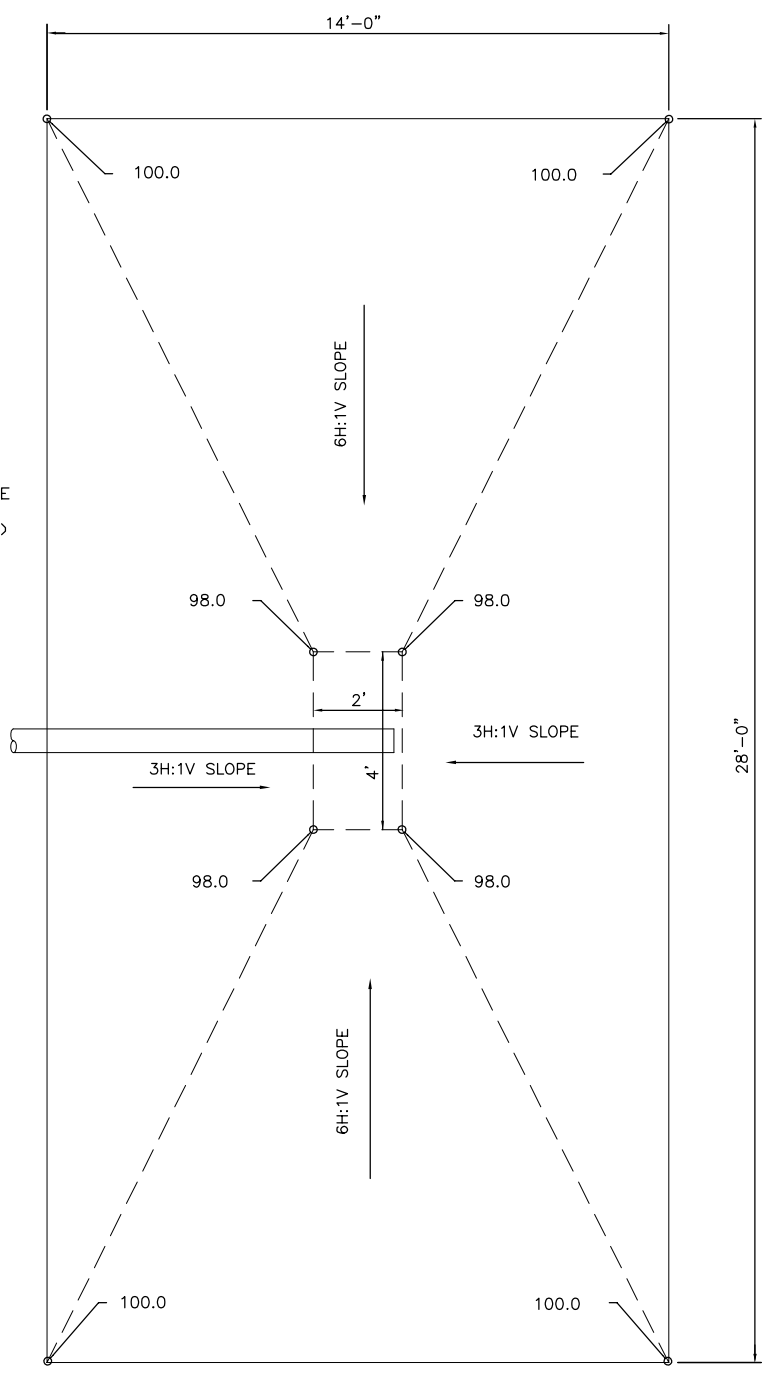
MANHOLE PIPING DETAIL
NOT TO SCALE

- NOTE:**
1. SEE SAND AND GRAVEL GRADATIONS IN THE CQA PLAN. THE SAND AND GRAVEL THICKNESSES ARE EACH 0.9 TO 1.0 FEET AND NO COMPACTION IS REQUIRED FOR EITHER LAYER.

COLLECTION LYSIMETER SUMP DETAIL
NOT TO SCALE



LINER PENETRATION DETAIL 1
NOT TO SCALE



NOTE: LISTED ELEVATIONS ARE FOR REFERENCE ONLY AND REPRESENT TOP OF FOUNDATION. CONSTRUCTION ELEVATIONS ARE BASED ON TOP OF CLAY LAYER ELEVATIONS AND WILL BE DETERMINED PRIOR TO CONSTRUCTION OF THE LYSIMETER(S). GRADE TOLERANCE SHALL BE GRADE TO 0.2-FOOT BELOW GRADE.

COLLECTION LYSIMETER - PLAN VIEW



NOTE: SEE ALSO GWQDP APPENDIX C, CQA PLAN FOR COLLECTION LYSIMETERS.

CLIVE FACILITY CLASS A SOUTH/11e.(2) DISPOSAL CELL COLLECTION LYSIMETERS DETAILS CLIVE, UTAH	
DRAFTED BY D. SQUIRES	DATE 01/04/08
REVIEWED BY G. DUTSON	REV. 1
APPROVED BY D. BOOTH	SCALE AS NOTED
DRAWING NO. 07021 V8	