

ATTACHMENT II

CHP Available DMR Data for 2009 -2012

P/N DRAFT

Table 2
Outfall 002 Discharge Mar. 14 - Mar. 28, 2011

Sample Date	Lab	gpd	Analyses	Result	Units	Analysis Date	Method
3/16/2011 9:50 am	IML	2880	Total Dissolved Solids (180)	850	mg/L	3/21/2011	SM 2540
			Total Suspended Solids	12	mg/L	3/22/2011	SM2540
			Oil & Grease, N-Hexane Extractable	ND	mg/L	3/23/2011	EPA 1664A
			Total Iron	0.28	mg/L	3/23/2011	EPA 200.7
			Total Selenium	ND	mg/L	3/23/2011	EPA 200.7

Table 3
Outfall 002 Discharge Mar. 15 - Mar. 25, 2011

Sample Date	Lab	gpd	Analyses	Result	Units	Analysis Date	Method
3/16/2011 1:15 pm	IML	21,600	Total Dissolved Solids (180)	830	mg/L	3/21/2011	SM 2540
			Total Suspended Solids	48	mg/L	3/22/2011	SM2540
			Oil & Grease, N-Hexane Extractable	ND	mg/L	3/23/2011	EPA 1664A
			Total Iron	1.60	mg/L	3/23/2011	EPA 200.7
			Total Selenium	ND	mg/L	3/23/2011	EPA 200.7

Table 4
Outfall 003 Discharge Apr. 20 - Apr. 28, 2011

Sample Date	Lab	gpd	Analyses	Result	Units	Analysis Date	Method
4/25/2011 3:12 pm	IML	1,900	pH	8.6	s.u.	4/28/2011	SM 4500 H B
			Total Dissolved Solids (180)	1180	mg/L	5/2/2011	SM 2540
			Total Suspended Solids	7	mg/L	4/29/2011	SM2540
			Oil & Grease, N-Hexane Extractable	ND	mg/L	5/11/2011	EPA 1664A
			Total Iron	0.10	mg/L	5/2/2011	EPA 200.7
			Total Selenium	ND	mg/L	5/2/2011	EPA 200.7

Table 5

Outfall 003 Discharge Nov. 21 – Nov. 24, 2011

Sample Date	Lab	gpd	Analyses	Result	Units	Analysis Date	Method
11/21/2011 11:45 pm	CHEMTECH-FORD	7,200	pH	8.5	s.u.	11/23/2011	SM 4500 H B
			Total Dissolved Solids (180)	1820	mg/L	11/23/2011	SM 2540
			Total Suspended Solids	10	mg/L	11/23/2011	SM2540
			Oil & Grease, N-Hexane Extractable	ND	mg/L	11/30/2011	EPA 1664A
			Total Iron	0.04	mg/L	12/6/2011	EPA 200.7
			Dissolved Selenium	ND	mg/L	12/1/2011	EPA 200.7

Table 6

Outfall 005 Discharge Oct. 3 – Oct. 25, 2011

Sample Date	Lab	gpd	Analyses	Result	Units	Analysis Date	Method
10/21/2011 11:55 am	CHEMTECH-FORD	5,729	pH	8.1	s.u.	10/26/2011	SM 4500 H B
			Total Dissolved Solids (180)	836	mg/L	10/26/2011	SM 2540
			Total Suspended Solids	35	mg/L	10/26/2011	SM2540
			Oil & Grease, N-Hexane Extractable	ND	mg/L	10/31/2011	EPA 1664A
			Total Iron	0.47	mg/L	11/2/2011	EPA 200.7
			Dissolved Selenium	0.03	mg/L	11/8/2011	EPA 200.7

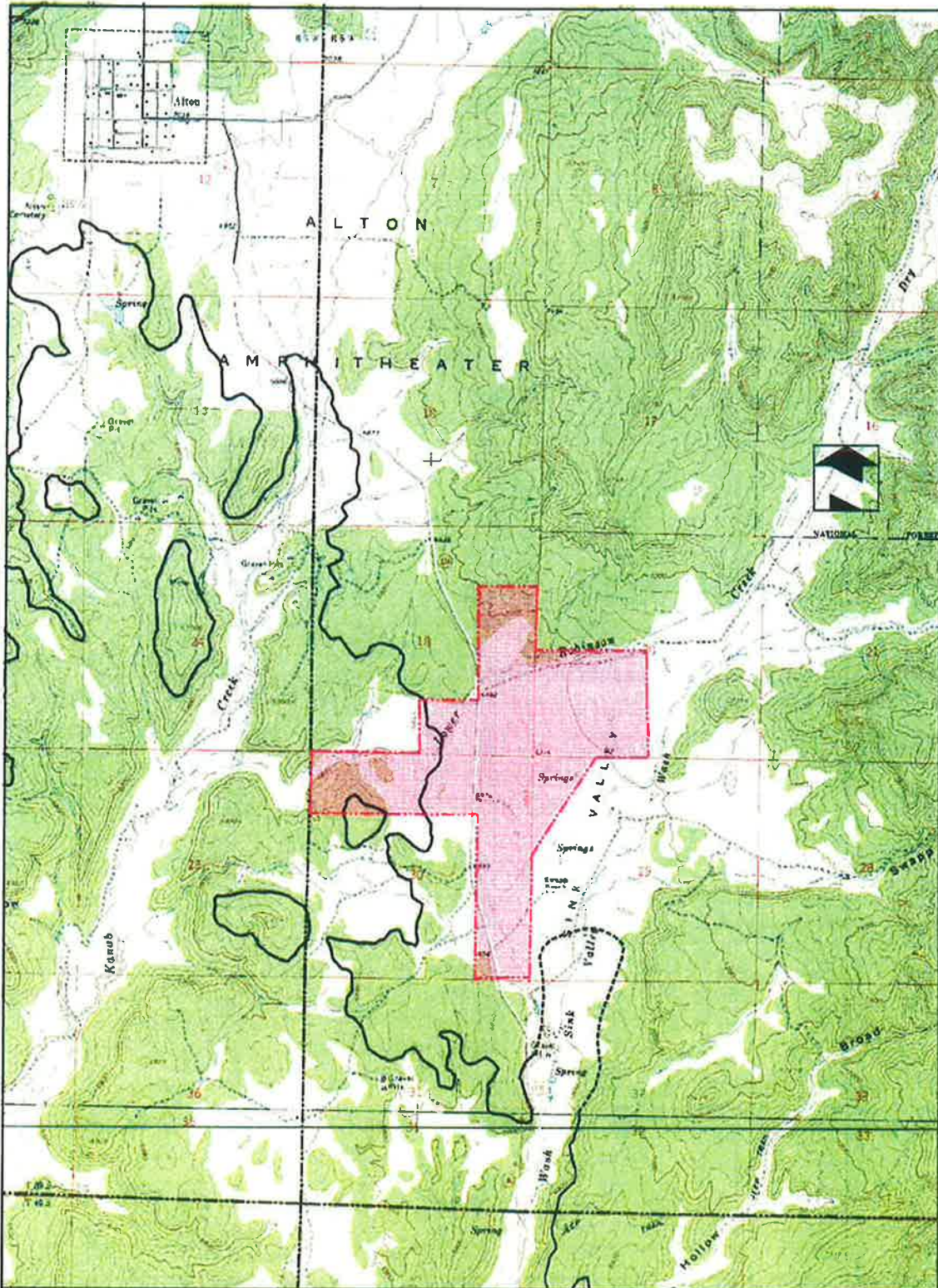
Table 7

Outfall 005 Discharge Nov. 21 – Nov. 24, 2011

Sample Date	Lab	gpd	Analyses	Result	Units	Analysis Date	Method
11/21/2011 11:20 am	CHEMTECH-FORD	7,200	pH	8.4	s.u.	11/23/2011	SM 4500 H B
			Total Dissolved Solids (180)	704	mg/L	11/23/2011	SM 2540
			Total Suspended Solids	55	mg/L	11/28/2011	SM2540
			Oil & Grease, N-Hexane Extractable	6	mg/L	11/30/2011	EPA 1664A
			Total Iron	0.83	mg/L	12/6/2011	EPA 200.7
			Dissolved Selenium	ND	mg/L	12/1/2011	EPA 200.7

Table 1

	Source	Discharge	Latitude/ Longitude	Constr. Status	Discharge	Treatment Given/proposed	Projected Rate of Discharge	Discharge History (See Tables 2 – 7 for discharge analysis and actual rate)
001	Storm water runoff from sediment pond #1	Lower Robinson Creek	37° 24' 13.58" N 112° 27' 12.65" W	Built Jan. 2011	Intermittent	Settling Pond w/oil skimmer	342,000 gpd	No Discharge
001B	Storm water runoff from sediment pond #1B	Lower Robinson Creek	37° 24' 11.48" N 112° 27' 15.38" W	Built Jan. 2011	Intermittent	Settling Pond w/oil skimmer	33,000 gpd	No Discharge
002	Storm water runoff from sediment pond #2	Lower Robinson Creek	37° 24' 9.96" N 112° 27' 15.42" W	Built Jan. 2011	Intermittent	Settling Pond w/oil skimmer	179,000 gpd	Mar. 14 – Mar. 28, 2011 Storm water
003	Ground water and Storm water runoff from sediment pond #3	Lower Robinson Creek	37° 23' 50.31" N 112° 27' 52.40" W	Built Jan. 2011	Intermittent	Settling Pond	1,130,000 gpd	Mar. 15 – Mar. 25, 2011 Storm water Apr. 20 – Apr. 28, 2011 Storm water Nov. 21 – Nov. 24, 2011 Storm water
004	Ground water and Storm water runoff from sediment pond #4	Sink Valley Wash	37° 23' 00.66" N 112° 27' 02.21" W	Not Built	Intermittent	Settling Pond	996,000 gpd	No Discharge
005	Up-gradient alluvial groundwater from a collection sump	Lower Robinson Creek	37° 24' 5.39" N 112° 27' 21.03" W	Built 2012 / removed 2012	Intermittent		144,000 gpd	Oct. 3 – Oct. 25, 2011 Ground water Nov. 21 – Nov. 24, 2011 Ground water



LEGEND: PERMIT AREA COAL LINE BOUNDARY COUNTY ROAD	DRAWN BY: N. BUTKOVICH	CHECKED BY: APC	REVISIONS		PERMIT AREA COAL HOLLOW PROJECT ALTON, UTAH DRAWING: 1-1	 463 North 100 West Suite Cedar City, Utah 84720 Phone: 435 967-5331 Fax: 435 967-1192
	DRAWING: 1-1	DATE: 6/16/04	DATE: 9/13/04 3-6-06 4/27/06 5/18/06 6-6-06 2-21/07 8-25/08	BY: NLB NLB NLB NLB NLB NLB CRM		