



State of Utah

SPENCER J. COX
Governor

DEIDRE HENDERSON
Lieutenant Governor


Department of
Environmental Quality

Kimberly D. Shelley
Executive Director

DIVISION OF AIR QUALITY
Bryce C. Bird
Director

GUIDELINES

TO: New Source Review Sections

FROM: Joe Thomas, Permitting Branch Manager 
Joe Thomas (Apr 2, 2021 05:13 MDT)

DATE: March 26, 2021

SUBJECT: Source Type Determination Flowcharts

Purpose

Flowcharts 1 & 2 are intended to aid new source review (NSR) engineers, sources, and the public in determining if a source is considered a major source, minor source, or small source.

Analysis

As part of the permitting process it is necessary to ascertain if a source is a major source, minor source, or small source in order to determine any applicable rules or requirements.

Implementation

Applying source specific parameters to Flowcharts 1 & 2 provides a method to NSR engineers, sources, and the public in determining if a source is a major source, minor source, or small source. Flowchart 1 applies to sources that are located inside the PM_{2.5} serious non-attainment area, and Flowchart 2 applies to sources that are located outside the PM_{2.5} serious non-attainment area.

Authority

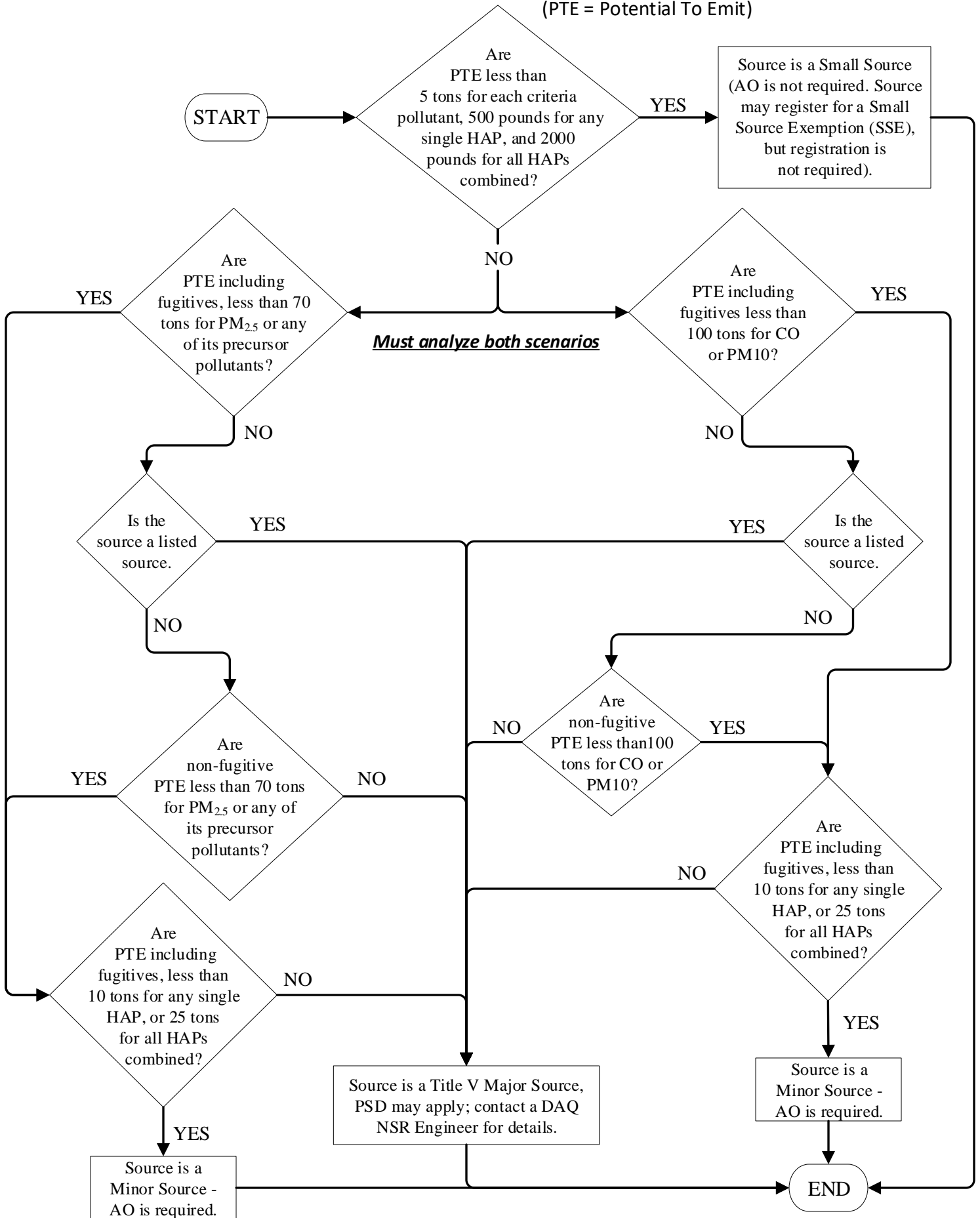
UAC R307-101-2, R307-401-1, R307-401-9, R307-415-3, 40 CFR 51.165

This Guideline shall be audited every five years by the NSR Minor Section Manager to determine the current status and relevance of the information.

Flowchart 1

Sources Inside PM_{2.5} Serious Non-attainment Area

(PTE = Potential To Emit)



Flowchart 2

Sources Outside PM_{2.5} Serious Non-attainment Area

(PTE = Potential To Emit)

