



State of Utah

GARY R. HERBERT
Governor

SPENCER J. COX
Lieutenant Governor

Department of
Environmental Quality

Alan Matheson
Executive Director

DIVISION OF AIR QUALITY
Bryce C. Bird
Director

GUIDELINES

TO: New Source Review Sections

FROM: Regg Olsen, Permit Branch Manager *RDO 3/13/17*

DATE: March 13, 2017

SUBJECT: Source Location Determination Flow Chart

This guideline is intended to aid New Source Review (NSR) engineers, sources, and the public in determining if the source is located in an attainment, nonattainment, or maintenance area.

All sources must comply with the following applicable requirements, regardless of location:

- R307-401 for NSR permitting requirements
- R307-410 for emissions impact analysis
- R307-200 Series for specific sources, emission units, or emitting activities

Sources located in an attainment area may need to comply with the following:

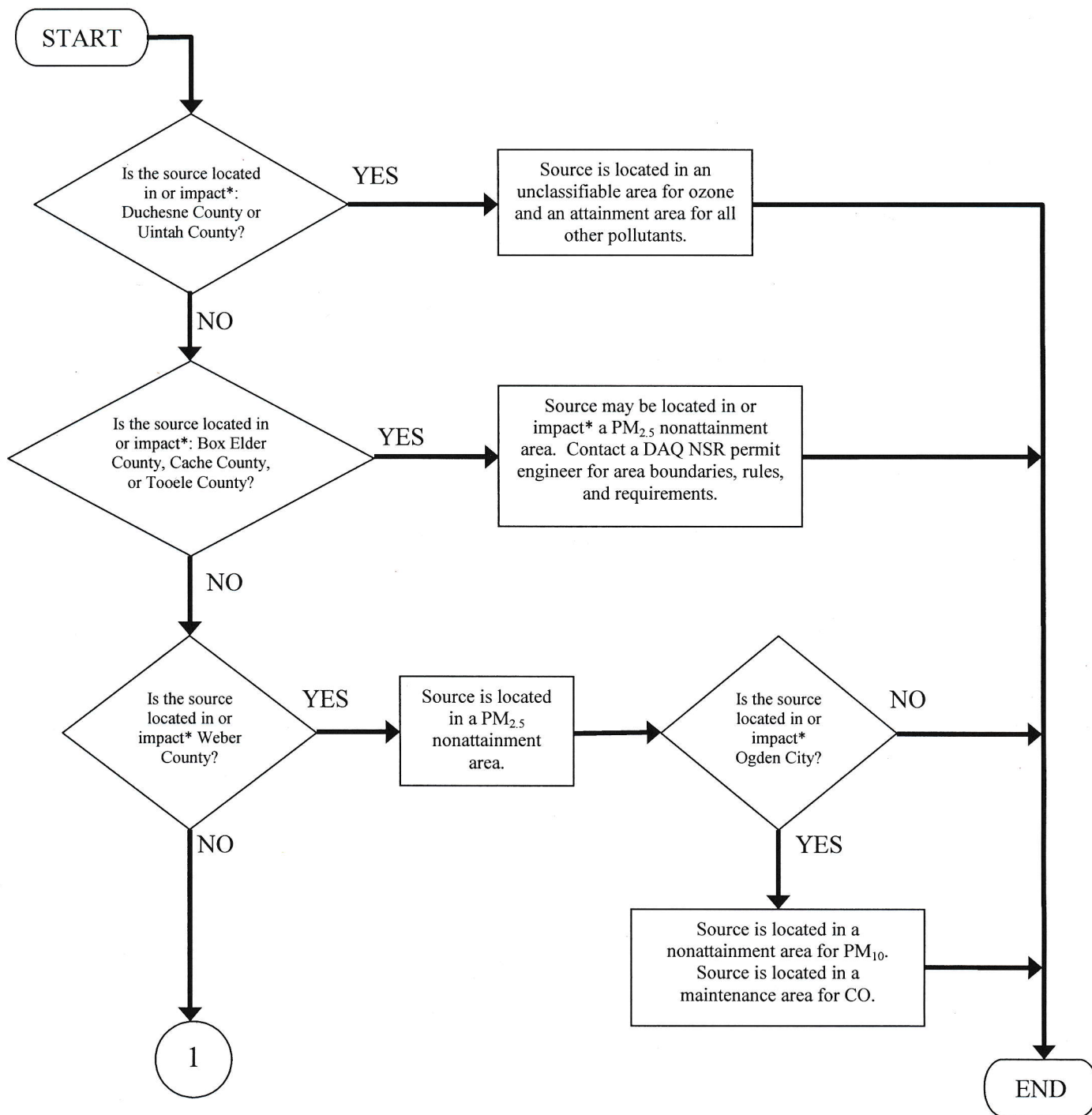
- R307-405 for major sources (PSD)

Sources located in nonattainment or maintenance areas may need to comply with the following:

- R307-403 for nonattainment NSR permitting requirements
- R307-420 for ozone offset requirements
- R307-421 for PM₁₀ offset requirements
- R307-300 Series for specific sources, emission units, or emitting activities

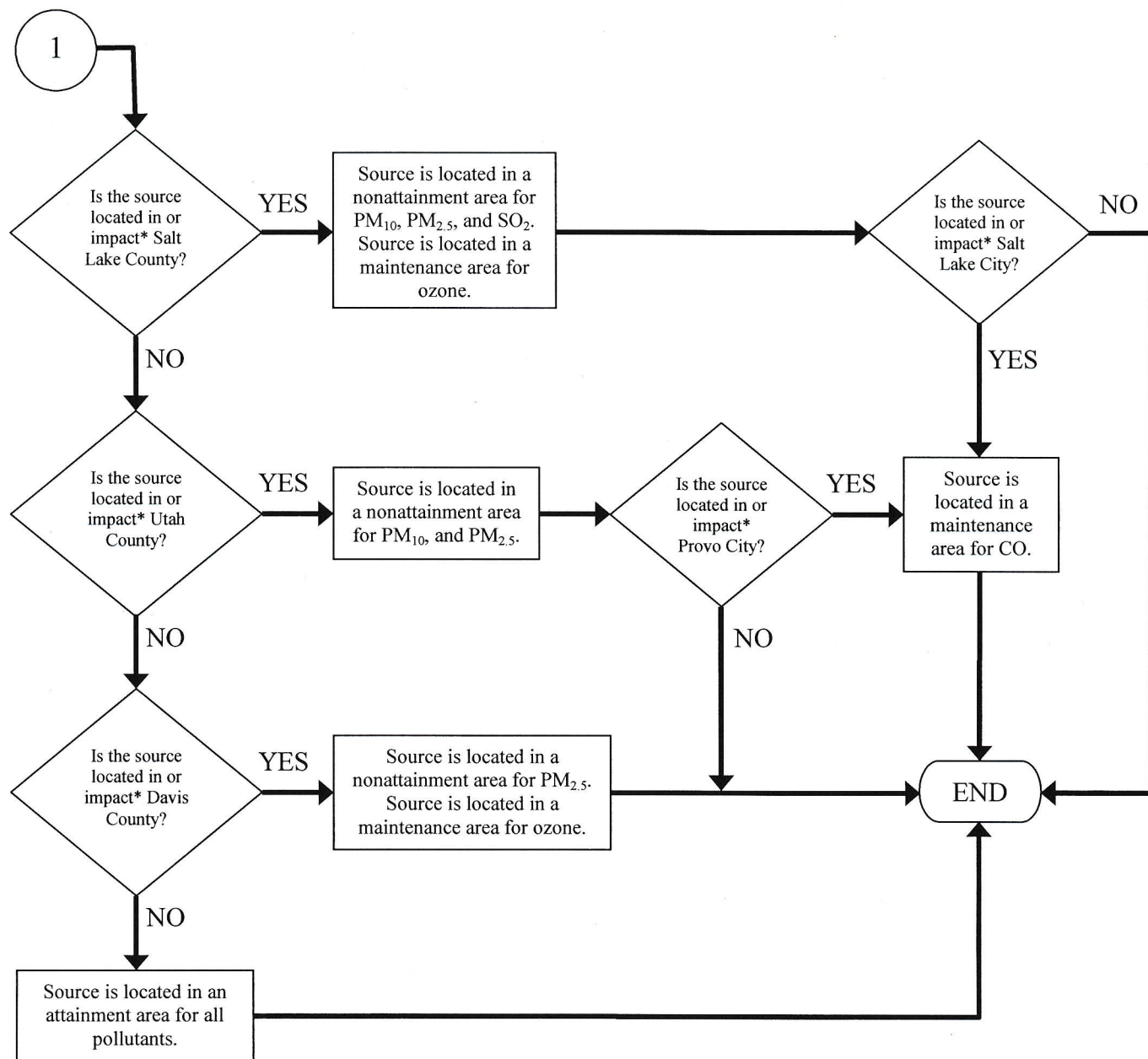
This guideline shall be audited every five years by the minor NSR section manager to determine the current status and relevance of the information.

Location Determination



*Impact means having an increase greater than the increments listed in R307-403-3.

This document is intended for guidance and educational purposes only. It is not intended to include all possible scenarios. The DAQ NSR Section should be contacted for site specific requirements.

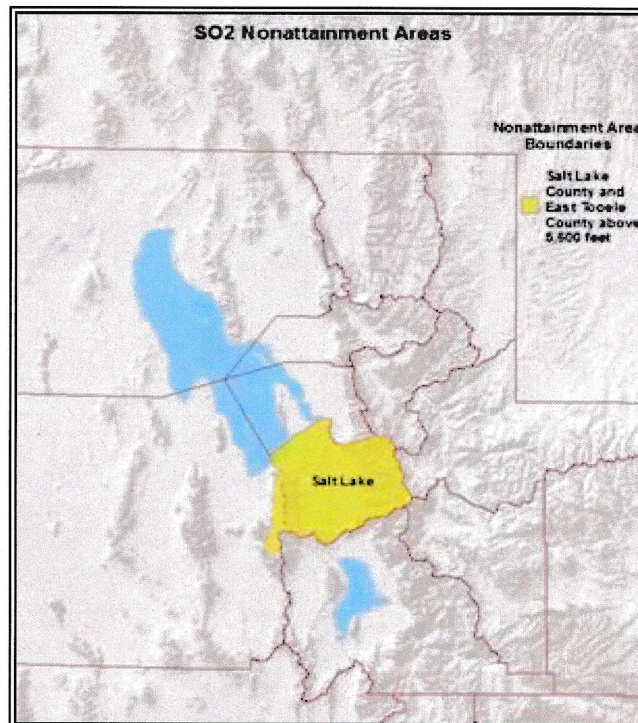
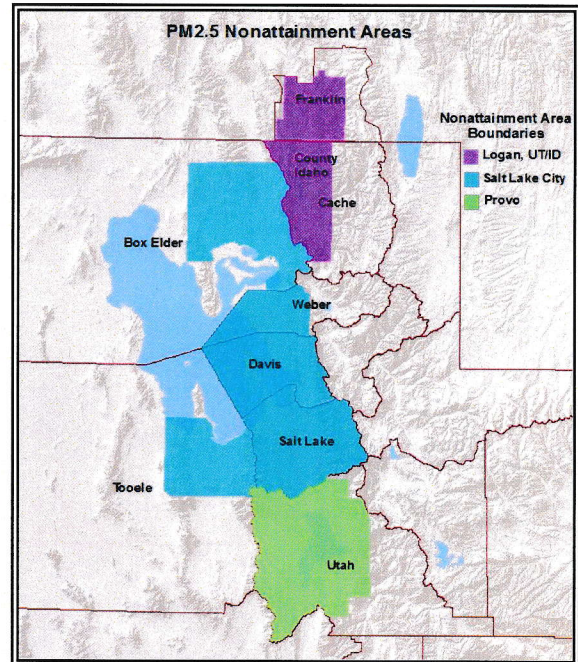
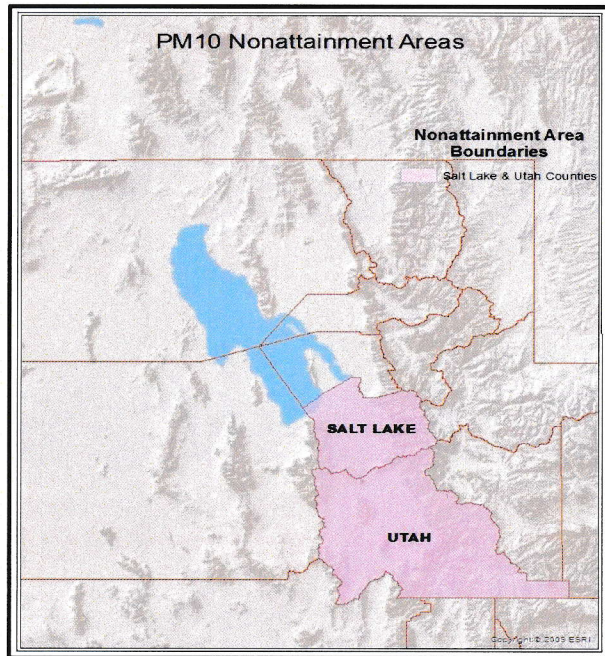


*Impact means having an increase greater than the increments listed in R307-403-3.

This document is intended for guidance and educational purposes only. It is not intended to include all possible scenarios. The DAQ NSR Section should be contacted for site specific requirements.

(Updated January 2013)

Utah Nonattainment Areas



Utah Maintenance Areas

