



Executive Director's Office

Revised 9/04/19

Interim Executive Director
Scott Baird

Executive Assistant
Vacant

Governor Appointed Boards

Air Quality

Drinking Water

Waste Management & Radiation Control

Water Quality

Director of Operations
Kim Shelley

Env Sci
Vacant

Deputy Director
Vacant

Env Plan Con
Rennette Anderson

Internal Auditor
Rebecca Cushing

Human Resource Management
Larene Wyss

Department of Technology Services
Bill Boudreau

AG Office/DEQ
Craig Anderson

Admin Legal Sec
Shane Bekkemellom

District Engineers

Env Dist Eng
John Chartier

Env Dist Eng
Scott Hacking

Env Dist Eng
Nathan Hall

Env Dist Eng
J. Paul Wright

Office of Planning & Public Affairs

Com Director
Donna Spangler

Com Specialist
Jared Mandenhall

Info Spec
Eleanor Divver

Info Spec
Christine Osborne

Web Manager
Terry Davis

Info Spec
Jodie Swanson

Info Spec
D'yani Wood

Office of Support Services

Office Director
Craig Silotti

Fin Mgr
Valerie Warr

Purchasing Agent
Pam Martin

Accounting Tech
Kathleen Gage

Fin Mgr
Dale Jorgensen

Fin An
Jeremy Andrews

Fin An
Marjory Chelsea

Fin An
Jinnie Edgar

Facility Coord
Diane Hernandez

Divisions

Air Quality

Drinking Water

Environmental Response & Remediation

Waste Management and Radiation Control

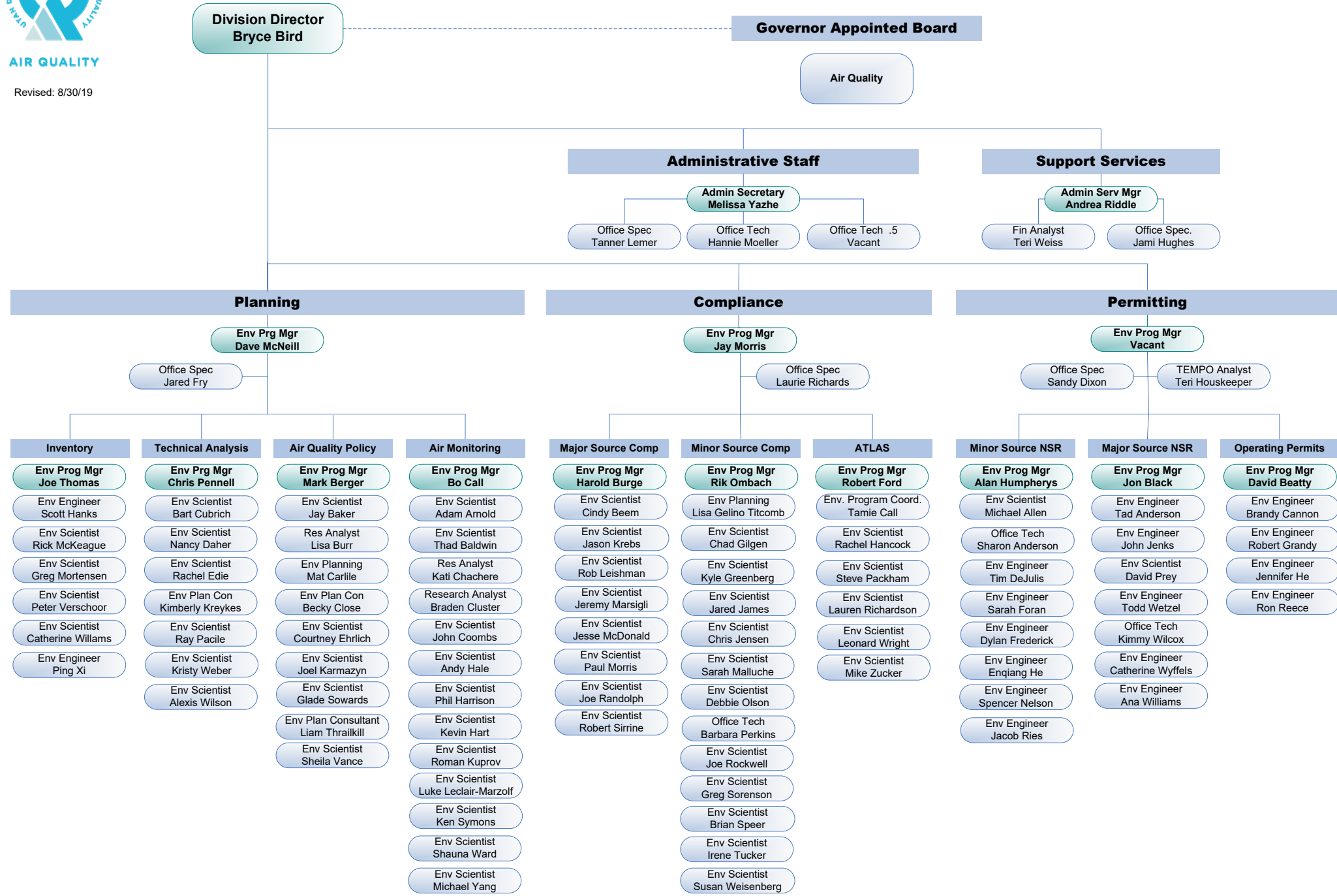
Water Quality



Division of Air Quality

AIR QUALITY

Revised: 8/30/19





Division of Drinking Water

DRINKING WATER

Revised 7/16/19

Division Director
Marie Owens

Governor Appointed Board

Drinking Water

Admin Sec
Allyson Spevak

Assistant Director
Ying Ying Macauley

Env Program Mgr
Patti Fauver

Env Engineer
Eva Nieminski

Admin Services

Adm Services Mgr
Sandy Pett

Office Specialist
David Gould

Cont/Grant
Hongmin (Jessica) Jin

Office Specialist
Laurie Leib

Tech Assistance

Eng Mgr
Michael Grange

Env Prog Coord
Heather Bobb

Env Scientist
Ryan Dearing

Env Scientist
Dave Hansen

Env Prog Coord
Dawnie Jacobo

Env Scientist
Pete Keers

Env Engineer
Lisa Nelson

Env Engineer
Rich Peterson

Env Scientist
Gary Rager

Permitting

Eng Mgr
Nathan Lunstad

Env Scientist
Deidre Beck

Financial Analyst
Marianne Booth

Env Scientist
Bernie Clark

Env Engineer
Nagendra Dev

Env Engineer
Samuel Grenlie

Env Engineer
Camron Harry

Env Engineer
Chris Martin

Env Engineer
Michael Newberry

Env Scientist
Melissa Noble

Env Engineer
Cheryl Parker

Env Engineer
Zane Tomlins

Rules

Env Prog Mgr
Rachael Cassady

Office Specialist
Tammie Allen

Env Scientist
Michelle Deras

Env Prog Coord
Dallin Frank

Env Scientist
Emily Frary

Env Prog Coord
Sitara Frederico

Env Scientist
Janet Lee

Env Scientist
Randi Ryan

Env Prog Coord
Brandi Smith

Env Scientist
Colt Smith

Env Scientist
Lucas Treutel

Env Scientist
Matt Wycoff

Env Prog Coord
Jennifer Yee



Division of Environmental Response and Remediation

ENVIRONMENTAL RESPONSE & REMEDIATION

Revised 9/4/19

Division Director
Brent Everett

Governor Appointed Board

Solid & Hazardous
Waste Control

Management Support

Admin Services

Admin Service Mgr
Alicia Silotti

Financial Analyst
Thomas Kingston

Financial Analyst
Jeffrey Robb

Toxicology

Env Scientist
Scott Everett

Admin Support

Admin Secretary

Off Tech
Kinsey Blatter

Off Tech .5
Peggy Duckworth

Office Speialist
Jennifer Nelson

Off Tech
Michael Sammann

Off Tech
Amanda Sorensen

Off Tech
Sylvia Tran

Off Tech
Tino Valles

CERCLA

Env Mgr
Hans Millican

Com Relations

Env. Plan Consultant
Dave Allison

Site Assessment

Env Mgr
Rick Saathoff

Env Scientist
Craig Barnitz

Env Plan Consultant
Michelle Horning

Env Scientist
Madison McMullen

Env Scientist
Clair O'Donnell

Env Scientist
Neil Taylor

Superfund

Env Mgr
Katie Crane

Env Scientist
Doug Bacon

Env Engineer
Tom Daniels

Env Scientist
Tony Howes

Env Scientist
Michael Storck

Vol Cleanup & Brownfield

Env Mgr
Bill Rees

Env Scientist
Leigh Anderson

Env Engineer
David Bird

Env Scientist
Christopher Howell

Env Scientist
Joseph Katz

UST & LUST

Env Mgr
Therron Blatter

Env Prog Coor
Chelsea Qualls

LUST Petroleum Storage

Env Mgr
Vacant

Env Scientist
Kevin Beery

Env Scientist
Lauran Ortman

Env Scientist
Mike Pecorelli

Env Scientist
Hong Lei Tao

UST

Env Mgr
Doug Hansen

Env Scientist
Bruce Hagans

Env Scientist
Gary Harris

Env Scientist
Melissa Ottley

Env Scientist
DeAnn Rasmussen

Env Scientist
Kim Viehweg

Env Sci - Temp
Marc Wade

Env Scientist
Sean Warner

Env Scientist
David Wilson

LUST Rem Assistance

Env Mgr
Morgan Atkinson

Env Scientist
Eileen Brennan

Env Scientist
Mark Crim

Env Engineer
Avery Holyoak

Env Scientist
Hillary Mason



Division of Water Quality

WATER QUALITY

Revised 7/30/19

Division Director
Erica Gaddis

Governor Appointed Board

Water Quality

Assistant Director
Vacant

Assistant Director
Jim Harris

Administration

Admin Manager
Emily Canton

Con/Grants Analyst
Marsha Case

Archivist
Linda Gould

Office Specialist
Clanci Hawks

Office Specialist
Brenda Johnson

Accounting Tech
Jerry Rogers

Office Tech
Ilene Staker

Financial Analyst
Susan Woeppel

Info and Data Services

Env Prog Mgr
Lenora Sullivan

Env Scientist
Brianna Ariotti

Env Prog Coor
Monique Bridges

Env Prog Coord
Judy Etherington

Env Scientist
Toby Hooker

Env Scientist
Andrea Kilbane

Env Scientist
Ryan Parker

Env Scientist
Mark Stanger

Monitoring

Env Prog Mgr
Ben Brown

Env Scientist
Alex Anderson

Env Scientist
Ellen Bailey

Env Scientist
Marshall Baillie

Env Scientist
Robert Bird

Env Scientist
Dan English

Env Scientist
Kate Fickas-Naley

Env Scientist
David Jamison

Env Scientist
Brent Shaw

Env Scientist
Susan Tahir

Office Technician
Kelsea York

Standards and Tech Services

Env Prog Mgr
Ben Holcomb

Env Scientist
Chris Bittner

Env Scientist
Rebekah Downard

Env Scientist
Kate Fickas

Env Scientist
Jeff Ostermiller

Env Scientist
Jacob Vanderlaan

Env Scientist
Nick von Stackelberg

Env Scientist
Dave Wham

Watershed Protection

Env Prog Mgr
Jodi Gardberg

Env Scientist
Mike Allred

Env Scientist
Jim Bowcutt

Env Scientist
Scott Daly

Env Scientist
Amy Dickey

Env Scientist
Emilie Flemer

Env Scientist
Elise Hinman

Env Scientist
Lucy Parham

Env Scientist
Sandy Wingert

Engineering

Engineer Mgr
John Mackey

Env Scientist
Robert Beers

Env Engineer
Harry Campbell

Env Engineer
Skyler Davies

Env Engineer
Ken Hoffman

Env Scientist
Svetlana Kopytkovskiy

Env Engineer
Beth Wondimu

Groundwater Protection

Env Prog Mgr
Dan Hall

Env Scientist
Candace Cady

Env Engineer
Woody Cambell

Env Scientist
Brian Hamos

Env Scientist
Wynn John

Env Scientist
Mark Novak

Env Scientist
Christopher Shope

Surface Water

Env Prog Mgr
Matthew Garn

Env Engineer
Dan Griffin

Env Scientist
Sarah Leavitt

Env Scientist
Danielle Lenz

Env Scientist
Leanna Littler

Env Scientist
Kevin Okleberry

Env Scientist
Jen Robinson

Env Scientist
Lonnie Shull

Env Scientist
Jeff Studenka

Storm Water Permitting

Env Prog Mgr
Jeanne Riley

Env Scientist
Carl Adams

Env Scientist
Ryan Curtin

Env Scientist
Trisha Dipaola

Env Scientist
Mike George

Env Scientist
Donald Hall

Env Scientist
Lisa Stevens



Division of Waste Management and Radiation Control

WASTE MANAGEMENT
& RADIATION CONTROL

Revised:5/9/19

